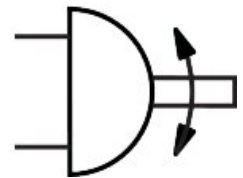
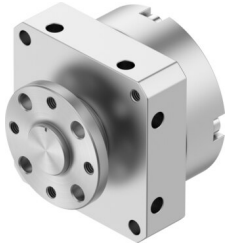


Semi-rotary drive DSM-8-180-P-FW

Part number: 185935

FESTO



Data sheet

Feature	Value
Size	8
Cushioning angle	0.5 deg
Swivel angle	0 deg...180 deg
Permissible stop radius	10 mm
Cushioning	Elastic cushioning rings/plates at both ends
Mounting position	optional
Mode of operation	Double-acting
Design	Vane
Position detection	Without
Operating pressure	0.35 MPa...0.8 MPa 3.5 bar...8 bar
Max. swivel frequency at 0.6 MPa (6 bar, 87 psi)	3 Hz
Repetition accuracy	1 deg
Operating medium	Compressed air to ISO 8573-1:2010 [7:4:4]
Note on operating and pilot medium	Lubricated operation possible (in which case lubricated operation will always be required)
Corrosion resistance class CRC	0 - No corrosion stress
LABS (PWIS) conformity	VDMA24364-B1/B2-L
Cleanroom suitability, measured according to ISO 14644-14	Class 6 according to ISO 14644-1
Ambient temperature	0 °C...60 °C
Max. stop force	30 N
Max. axial force	10 N
Max. radial force	20 N
Theoretical torque at 0.6 MPa (6 bar, 87 psi)	0.35 Nm
Permissible mass moment of inertia	0.0013 kgm ²
Product weight	85 g
Type of mounting	Via female thread
Pneumatic connection	M3
Note on materials	RoHS-compliant
Material drive shaft	High-alloy stainless steel
Material seals	TPE-U(PU)

Feature	Value
Material housing	Aluminium Anodised