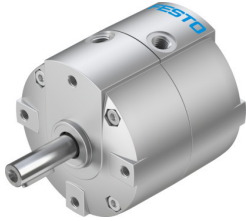


Semi-rotary drive DRVS-32-180-P

Part number: 1845720

FESTO



Data sheet

| Feature | Value |
|--|--|
| Size | 32 |
| Cushioning angle | 0.5 deg |
| Swivel angle | 0 deg...180 deg |
| Permissible stop radius | 28 mm |
| Cushioning | Elastic cushioning rings/plates at both ends |
| Mounting position | optional |
| Mode of operation | Double-acting |
| Design | Vane |
| Position detection | Via proximity switch |
| Variants | Spigot shaft |
| Operating pressure | 0.2 MPa...0.8 MPa 2 bar...8 bar |
| Max. swivel frequency at 0.6 MPa (6 bar, 87 psi) | 3 Hz |
| Repetition accuracy | 1 deg |
| Operating medium | Compressed air to ISO 8573-1:2010 [7:4:4] |
| Note on operating and pilot medium | Lubricated operation possible (in which case lubricated operation will always be required) |
| Corrosion resistance class CRC | 1 - Low corrosion stress |
| LABS (PWIS) conformity | VDMA24364-B2-L |
| Cleanroom class | Class 6 according to ISO 14644-1 |
| Ambient temperature | 0 °C...60 °C |
| Max. stop force | 480 N |
| Max. axial force | 75 N |
| Max. radial force | 200 N |
| Theoretical torque at 0.6 MPa (6 bar, 87 psi) | 10 Nm |
| Permissible mass moment of inertia | 0.02 kgm ² |
| Product weight | 912 g |
| Type of mounting | Via female thread |
| Pneumatic connection | G1/8 |
| Note on materials | RoHS-compliant |
| Material drive shaft | Nickel-plated steel |
| Material seals | TPE-U(PU) |

| Feature | Value |
|------------------|----------------------------|
| Material housing | Painted die cast aluminium |