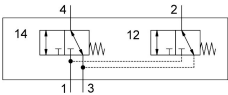


# Front panel valve SV/O-3-PK-3X2

Part number: 184135



## Data sheet

Feature	Value
Valve function	2x3/2-way, monostable, closed
Standard nominal flow rate (standardised to DIN 1343)	70 l/min
pneumatic working port	PK-3
Operating pressure	0 bar...8 bar
Type of reset	Mechanical spring
Nominal size	2.5 mm
Sealing principle	Soft
Mounting position	optional
Type of piloting	Direct
Flow direction	Non-reversible
Explosion protection	Zone 1 (ATEX) Zone 2 (ATEX) Zone 21 (ATEX) Zone 22 (ATEX)
Operating medium	Compressed air to ISO 8573-1:2010 [7:-:-]
LABS (PWIS) conformity	VDMA24364-B1/B2-L
Ambient temperature	-10 °C...60 °C
Product weight	34 g
Type of mounting	With through-hole
Pneumatic connection, port 1	PK-3
Pneumatic connection, port 2	PK-3
Material seals	NBR