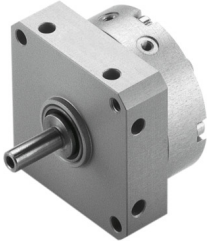


# Semi-rotary drive DSM-10-90-P

Part number: 173192

**FESTO**



## Data sheet

Feature	Value
Size	10
Cushioning angle	0.5 deg
Swivel angle	0 deg...90 deg
Cushioning	Elastic cushioning rings/plates at both ends
Mounting position	optional
Mode of operation	Double-acting
Design	Vane
Position detection	Without
Operating pressure	2.5 bar...8 bar
Max. swivel frequency at 0.6 MPa (6 bar, 87 psi)	3 Hz
Operating medium	Compressed air to ISO 8573-1:2010 [7:4:4]
Note on operating and pilot medium	Lubricated operation possible (in which case lubricated operation will always be required)
LABS (PWIS) conformity	VDMA24364-B1/B2-L
Cleanroom class	Class 6 according to ISO 14644-1
Ambient temperature	0 °C...60 °C
Theoretical torque at 0.6 MPa (6 bar, 87 psi)	0.85 Nm
Permissible mass moment of inertia	0.0026 kgm <sup>2</sup>
Product weight	140 g
Type of mounting	Via female thread
Pneumatic connection	M3
Note on materials	RoHS-compliant
Material drive shaft	High-alloy stainless steel
Material seals	TPE-U(PU)
Material housing	Aluminium Anodised