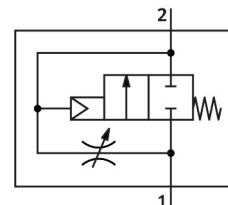


# On/off valve HEL-D-MAXI

Part number: 170692

FESTO



## Data sheet

| Feature                            | Value  |
|------------------------------------|--|
| Exhaust-air function               | With flow control option   |
| Type of actuation                  | Pneumatic  |
| Sealing principle                  | Soft   |
| Mounting position                  | optional   |
| Manual override                    | None   |
| Design                             | Piston gate valve  |
| Type of reset                      | Mechanical spring  |
| Type of piloting                   | Direct   |
| Flow direction                     | Non-reversible   |
| Valve function                     | 2/2-way, closed, monostable  |
| Operating pressure                 | 0.3 MPa...1.6 MPa<br>3 bar...16 bar  |
| Operating medium                   | Compressed air to ISO 8573-1:2010 [7:4:4]<br>Inert gases                                   |
| Note on operating and pilot medium | Lubricated operation possible (in which case lubricated operation will always be required) |
| Corrosion resistance class CRC     | 2 - Moderate corrosion stress  |
| LABS (PWIS) conformity             | VDMA24364-B1/B2-L  |
| Air purity class at output         | Compressed air to ISO 8573-1:2010 [7:4:4]<br>Inert gases                                   |
| Media temperature                  | -10 °C...60 °C   |
| Ambient temperature                | -10 °C...60 °C   |
| Product weight                     | 394 g  |
| Type of mounting                   | In-line installation   |
| Note on materials                  | RoHS-compliant   |
| Material seals                     | NBR  |
| Material housing                   | Die-cast aluminium   |