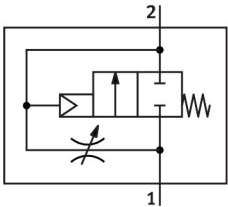


On/off valve HEL-D-MIDI

Part number: 170691

FESTO



Data sheet

| Feature | Value |
|------------------------------------|--|
| Exhaust-air function | With flow control option |
| Type of actuation | Pneumatic |
| Sealing principle | Soft |
| Mounting position | optional |
| Manual override | None |
| Design | Piston gate valve |
| Type of reset | Mechanical spring |
| Type of piloting | Direct |
| Flow direction | Non-reversible |
| Valve function | 2/2-way, closed, monostable |
| Operating pressure | 0.3 MPa...1.6 MPa 3 bar...16 bar |
| Operating medium | Compressed air to ISO 8573-1:2010 [7:4:4] Inert gases |
| Note on operating and pilot medium | Lubricated operation possible (in which case lubricated operation will always be required) |
| Corrosion resistance class CRC | 2 - Moderate corrosion stress |
| LABS (PWIS) conformity | VDMA24364-B1/B2-L |
| Air purity class at output | Compressed air to ISO 8573-1:2010 [7:4:4] Inert gases |
| Media temperature | -10 °C...60 °C |
| Ambient temperature | -10 °C...60 °C |
| Product weight | 270 g |
| Type of mounting | In-line installation |
| Note on materials | RoHS-compliant |
| Material seals | NBR |
| Material housing | Die-cast aluminium |