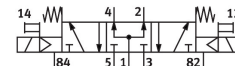
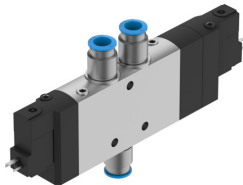


# Solenoid valve CPE24-M3H-5/3B-QS-12

Part number: 170353

**FESTO**



## Data sheet

| Feature   | Value                                      |
|---|--|
| Valve function  | 5/3-way, pressurised                       |
| Type of actuation                                     | Electric                                   |
| Construction width                                    | 24 mm                                      |
| Standard nominal flow rate (standardised to DIN 1343) | 1600 l/min                                 |
| pneumatic working port                                | QS-12                                      |
| Operating voltage                                     | 230V AC                                    |
| Operating pressure                                    | 0.25 MPa...1 MPa<br>2.5 bar...10 bar       |
| Design  | Piston gate valve                          |
| Type of reset   | Mechanical spring                          |
| Approval  | c UL us - Recognized (OL)                  |
| Maritime classification                               | See certificate                            |
| CE mark (see declaration of conformity)               | To EU Low Voltage Directive                |
| UKCA marking (see declaration of conformity)          | To UK regulations for electrical equipment |
| Certificate issuing authority                         | DNV-TAA000032X<br>UL MH19482               |
| Degree of protection                                  | IP65<br>With plug socket<br>To IEC 60529   |
| Nominal size  | 11 mm                                      |
| Exhaust-air function                                  | With flow control option                   |
| Sealing principle                                     | Soft                                       |
| Mounting position                                     | optional                                   |
| Manual override                                       | Detenting via accessory<br>Non-detenting   |
| Type of piloting                                      | Pilot actuated                             |
| Pilot air supply                                      | Internal                                   |
| Flow direction  | Non-reversible                             |
| Valve position code                                   | Inscription label holder                   |
| lap   | Overlap                                    |
| Switching time off                                    | 55 ms                                      |
| Switching time on                                     | 25 ms                                      |
| Duty cycle  | 100%                                       |

| Feature                                | Value  |
|--|--|
| Max. positive test pulse with 0 signal | 3300 µs  |
| Max. negative test pulse with 1 signal | 3100 µs  |
| Characteristic coil data               | 230 V AC: 50/60 Hz, pick-up power 3.0 VA, holding power 2.4 VA                             |
| Permissible voltage fluctuations       | -15%/+10%  |
| Operating medium                       | Compressed air to ISO 8573-1:2010 [7:4:4]  |
| Note on operating and pilot medium     | Lubricated operation possible (in which case lubricated operation will always be required) |
| Vibration resistance                   | Transport application test with severity level 2 to FN 942017-4 and EN 60068-2-6           |
| Shock resistance                       | Shock test with severity level 2 to FN 942017-5 and EN 60068-2-27                          |
| Corrosion resistance class CRC         | 2 - Moderate corrosion stress  |
| LABS (PWIS) conformity                 | VDMA24364-B1/B2-L  |
| Media temperature                      | -5 °C...50 °C  |
| Ambient temperature                    | -5 °C...50 °C  |
| Electrical connection                  | Type C   |
| Type of mounting                       | With through-hole  |
| Pilot exhaust port 82                  | M5   |
| Pilot exhaust port 84                  | M5   |
| Pilot air port 12                      | M5   |
| Pilot air port 14                      | M5   |
| Pneumatic connection, port 1           | QS-12  |
| Pneumatic connection, port 2           | QS-12  |
| Pneumatic connection, port 3           | G3/8   |
| Pneumatic connection, port 4           | QS-12  |
| Pneumatic connection, port 5           | G3/8   |
| Note on materials                      | RoHS-compliant   |
| Material seals                         | NBR  |
| Material housing                       | Die-cast aluminium   |