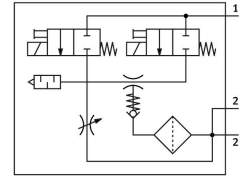
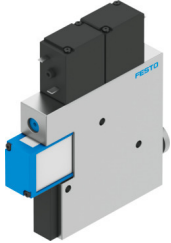


Vacuum generator VADMI-70

Part number: 162507

FESTO



Data sheet

| Feature | Value |
|------------------------------------------------------------------|------------------------------------------------------------------------------------------------|
| Nominal size, Laval nozzle | 0.7 mm |
| Grid dimension | 15 mm |
| Silencer design | Closed |
| Mounting position | optional |
| Ejector characteristic | High vacuum |
| Grade of filtration | 40 µm |
| Manual override | Non-detenting |
| Integrated function | Electric ejector pulse valve Flow control Electric on-off valve Filter Check valve |
| Valve function | Closed |
| Operating pressure | 0.15 MPa...0.8 MPa 1.5 bar...8 bar 21.75 psi...116 psi |
| Max. vacuum | 85 % |
| Nominal operating pressure | 0.6 MPa 6 bar 87 psi |
| Air supply time at nominal operating pressure with ejector pulse | 0.59 s |
| Operational voltage range DC | 21.6 V...26.4 V |
| Duty cycle | 100% |
| Approval | c UL us - Recognized (OL) |
| Operating medium | Compressed air to ISO 8573-1:2010 [7:4:4] |
| Note on operating and pilot medium | Lubricated operation not possible |
| Corrosion resistance class CRC | 2 - Moderate corrosion stress |
| LABS (PWIS) conformity | VDMA24364-B1/B2-L |
| Media temperature | 0 °C...60 °C |
| Degree of protection | IP65 |
| Ambient temperature | 0 °C...60 °C |
| Product weight | 170 g |
| Electrical connection | Plugs |

| Feature | Value |
|------------------------------|---------------------------------------------------|
| Type of mounting | With through-hole Via female thread Either: |
| Pneumatic connection, port 1 | M5 |
| Pneumatic connection, port 3 | Integrated silencer |
| Vacuum connection | G1/8 |
| Note on materials | RoHS-compliant |
| Material seals | NBR |
| Material receiver nozzle | Brass, nickel-plated |
| Material filter | PA |
| Material filter housing | PC |
| Material housing | Wrought aluminium alloy |
| Material silencer | PE POM |
| Material piston | POM |
| Material transmitter nozzle | Nickel-plated brass |