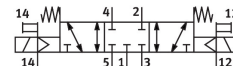


# Solenoid valve

## MN1H-5/3G-D-1-S-C

Part number: 159680

FESTO



## Data sheet

Feature	Value
Valve function	5/3 closed
Type of actuation	Electric
Construction width	42 mm
Standard nominal flow rate (standardised to DIN 1343)	1200 l/min
pneumatic working port	Sub-base size 1 to ISO 5599-1 G1/4
Operating voltage	Via solenoid coil, must be ordered separately
Operating pressure	-0.09 MPa...1.6 MPa -0.9 bar...16 bar
Design	Piston gate valve
Type of reset	Mechanical spring
Maritime classification	See certificate
Certificate issuing authority	DNV-TAA000032X
Degree of protection	IP65
Nominal size	8 mm
Grid dimension	43 mm
Exhaust-air function	With flow control option
Sealing principle	Soft
Mounting position	optional
Conforms to standard	ISO 5599-1
Manual override	Detenting via accessory Non-detenting
ISO code	169
Type of piloting	Pilot actuated
Pilot air supply	External
Flow direction	Reversible
lap	Overlap
Pilot pressure	3 bar...10 bar
Switching time off	44 ms
Switching time on	20 ms
Max. positive test pulse with 0 signal	3700 µs
Max. negative test pulse with 1 signal	4600 µs

Feature	Value
Operating medium	Compressed air to ISO 8573-1:2010 [7:4:4]
Note on operating and pilot medium	Lubricated operation possible (in which case lubricated operation will always be required)
Vibration resistance	Transport application test with severity level 1 to FN 942017-4 and EN 60068-2-6
Shock resistance	Shock test with severity level 2 to FN 942017-5 and EN 60068-2-27
LABS (PWIS) conformity	VDMA24364-B1/B2-L
Media temperature	-5 °C...50 °C
Sound pressure level	85 dB(A)
Pilot medium	Compressed air to ISO 8573-1:2010 [7:4:4]
Ambient temperature	-5 °C...50 °C
Product weight	650 g
Electrical connection	Via N1 coil, to be ordered separately
Type of mounting	On sub-base With through-hole
Pilot air port 12	Sub-base size 1 to ISO 5599-1
Pilot air port 14	Sub-base size 1 to ISO 5599-1
Pneumatic connection, port 1	Sub-base size 1 to ISO 5599-1
Pneumatic connection, port 2	Sub-base size 1 to ISO 5599-1
Pneumatic connection, port 3	Sub-base size 1 to ISO 5599-1
Pneumatic connection, port 4	Sub-base size 1 to ISO 5599-1
Pneumatic connection, port 5	Sub-base size 1 to ISO 5599-1
Note on materials	RoHS-compliant
Material seals	HNBR NBR
Material housing	Die-cast aluminium