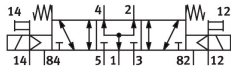
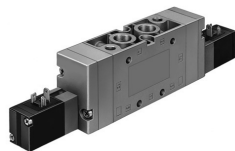


# Solenoid valve

## MVH-5/3B-3/8-S-B

Part number: 15345

FESTO



## Data sheet

| Feature   | Value                                     |
|---|---|
| Valve function  | 5/3-way, pressurised                      |
| Type of actuation                                     | Electric                                  |
| Construction width                                    | 40 mm                                     |
| Standard nominal flow rate (standardised to DIN 1343) | 2600 l/min                                |
| pneumatic working port                                | G3/8                                      |
| Operating voltage                                     | 24V DC                                    |
| Operating pressure                                    | -0.09 MPa...1 MPa<br>-0.9 bar...10 bar    |
| Design  | Piston gate valve                         |
| Type of reset   | Mechanical spring                         |
| Nominal size  | 12 mm                                     |
| Grid dimension  | 41 mm                                     |
| Exhaust-air function                                  | With flow control option                  |
| Sealing principle                                     | Soft                                      |
| Mounting position                                     | optional                                  |
| Manual override                                       | Non-detenting                             |
| Type of piloting                                      | Pilot actuated                            |
| Pilot air supply                                      | External                                  |
| Flow direction  | Reversible                                |
| lap   | Overlap                                   |
| Pilot pressure  | 0.3 MPa...1 MPa<br>3 bar...10 bar         |
| Max. switching frequency                              | 3 Hz                                      |
| Switching time off                                    | 92 ms                                     |
| Switching time on                                     | 35 ms                                     |
| Switching time reversal                               | 73 ms                                     |
| Max. positive test pulse with 0 signal                | 2200 µs                                   |
| Max. negative test pulse with 1 signal                | 3700 µs                                   |
| Characteristic coil data                              | 24 V DC: 2.5 W                            |
| Permissible voltage fluctuations                      | +/- 10 %                                  |
| Operating medium                                      | Compressed air to ISO 8573-1:2010 [7:4:4] |

| Feature                            | Value  |
|------------------------------------|--|
| Note on operating and pilot medium | Lubricated operation possible (in which case lubricated operation will always be required) |
| Corrosion resistance class CRC     | 1 - Low corrosion stress   |
| LABS (PWIS) conformity             | VDMA24364-B1/B2-L  |
| Storage temperature                | -40 °C...60 °C   |
| Media temperature                  | -5 °C...50 °C  |
| Pilot medium                       | Compressed air to ISO 8573-1:2010 [7:4:4]  |
| Ambient temperature                | -5 °C...50 °C  |
| Product weight                     | 1000 g   |
| Type of mounting                   | On PR rail<br>With through-hole<br>Either:   |
| Auxiliary pilot air port 12        | G1/8   |
| Auxiliary pilot air port 14        | G1/8   |
| Pilot exhaust port 82              | M5   |
| Pilot exhaust port 84              | M5   |
| Pilot air port 12                  | G1/8   |
| Pilot air port 14                  | G1/8   |
| Pneumatic connection, port 1       | G3/8   |
| Pneumatic connection, port 2       | G3/8   |
| Pneumatic connection, port 3       | G3/8   |
| Pneumatic connection, port 4       | G3/8   |
| Pneumatic connection, port 5       | G3/8   |
| Note on materials                  | RoHS-compliant   |
| Material seals                     | NBR  |
| Material housing                   | Die-cast aluminium   |