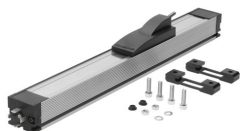


Displacement encoder MLO-POT-450-TLF

Part number: 152628

FESTO



Data sheet

Feature	Value
CE mark (see declaration of conformity)	To EU EMC Directive
Functional principle of measuring system	Analogue
Ambient temperature	-30 °C...100 °C
Recommended wiper current	1 µA
Max. wiper current, short-time	10 mA
Max. travel speed	10 m/s
Max. travel acceleration	200 m/s ²
Displacement resolution	0.01 mm
Non-dependent linearity	0.05 %
Temperature coefficient	5 ppm/K
Stroke	450 mm
Output signal	Analogue
Connection resistance	5 kOhm
Connection resistance tolerance	20 %
Nominal operating voltage DC	10 V
Max. operating voltage DC	42 V
Permissible voltage fluctuations	<1%
Max. current consumption	4 mA
Electrical connection	4-pin Type A Plugs To DIN 43650 Square design
Design	With cover strip With moving slide Open profile
Parallel offset of coupling	± 1.5 mm
Angle offset of driver	± 1 °
Mounting position	optional
Product weight	1200 g
Material housing	Wrought aluminium alloy Anodised
Material covering	Steel

Feature	Value
Material slide housing	Die-cast aluminium Polymer
Material slide coupling	Steel
Material cover	Polymer
Material mounting clips	PEI
Degree of protection at top	To IEC 60529
Degree of protection at bottom	To IEC 60529
Vibration resistance to DIN/IEC 68 Part 2-6	Tested to severity level 2
Continuous shock resistance to DIN/IEC 68 Part 2-82	Tested to severity level 2
LABS (PWIS) conformity	VDMA24364-B2-L