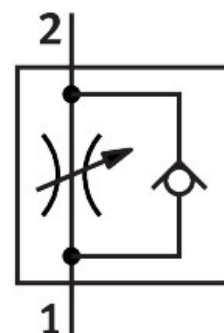


One-way flow control valve GR-M5-B

Part number: 151213

FESTO



Data sheet

Feature	Value
Valve function	One-way flow control function
Pneumatic connection, port 1	M5
Pneumatic connection, port 2	M5
Adjustment component	Knurled screw
Type of mounting	Front panel mounting With through-hole Either:
Standard nominal flow rate in flow control direction	115 l/min
Standard nominal flow rate in blocked direction	130 l/min...137 l/min
Operating pressure	0.5 bar...10 bar
Ambient temperature	-20 °C...60 °C
Material housing	Wrought aluminium alloy
Explosion protection	The information in the certificate must be observed! Zone 1 (ATEX) Zone 2 (ATEX) Zone 21 (ATEX) Zone 22 (ATEX)
Mounting position	optional
Operating medium	Compressed air to ISO 8573-1:2010 [7:4:4]
Note on operating and pilot medium	Lubricated operation possible (in which case lubricated operation will always be required)
LABS (PWIS) conformity	VDMA24364-B1/B2-L
Media temperature	-20 °C...60 °C
Nominal size	2 mm
Product weight	19 g
Note on materials	RoHS-compliant
Material seals	NBR
Material sleeve	POM

Feature	Value
Material adjusting screw	High-alloy steel
Material nut	Wrought aluminium alloy