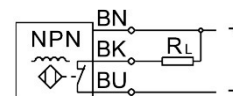
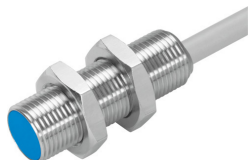


# Proximity sensor SIEH-M12B-NO-K-L

Part number: 150452

**FESTO**



## Data sheet

Feature	Value
Conforms to standard	EN 60947-5-2
Approval	C-Tick c UL us listed (OL)
CE mark (see declaration of conformity)	To EU EMC Directive
Rated operating distance	4 mm
Assured operating distance	3.24 mm
Reduction factors	Aluminium = 0.4 Stainless steel St 18/8 = 0.8 Copper = 0.4 Brass = 0.5 Steel St 37 = 1.0
Ambient temperature	-25 °C...70 °C
Repetition accuracy with constant conditions	0.2 mm
Switching output	NPN
Switching element function	N/C contact
Hysteresis	0.36 mm
Max. switching frequency	2500 Hz
Max. output current	200 mA
Voltage drop	2 V
Inductive protective circuit	Integrated
Short circuit current rating	Pulsed
Operational voltage range DC	10 V...30 V
Residual ripple	± 10%
No-load supply current	10 mA
Reverse polarity protection	For all electrical connections
Electrical connection	Cable
Cable length	2.5 m
Material cable sheath	TPE-U(PUR)
Size	M12
Type of mounting	Via lock nut
Mounting type	Flush
Product weight	110 g

Feature	Value
Material housing	Brass PBTP Nickel-plated
Switching status indication	Yellow LED
Ambient temperature with moving cable	-5 °C...70 °C
Degree of protection	IP65 IP67
Corrosion resistance class CRC	2 - Moderate corrosion stress
LABS (PWIS) conformity	VDMA24364-B2-L
Additional information for sensor selection	with increased sensing distance
Electrical output	NPN
Selection of sensor design	Standard