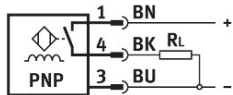
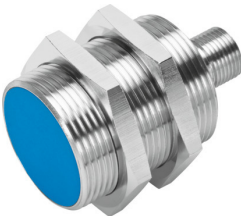


# Proximity sensor SIEN-M30B-PS-S-L

Part number: 150435

FESTO



## Data sheet

Feature	Value
Conforms to standard	EN 60947-5-2
Approval	RCM trademark c UL us listed (OL)
CE mark (see declaration of conformity)	To EU EMC Directive
Note on materials	RoHS-compliant
Rated operating distance	10 mm
Assured operating distance	8.1 mm
Reduction factors	Aluminium = 0.45 Stainless steel St 18/8 = 0.8 Copper = 0.4 Brass = 0.55 Steel St 37 = 1.0
Ambient temperature	-25 °C...70 °C
Repetition accuracy	0.5 mm
Switching output	PNP
Switching element function	N/O contact
Hysteresis	1.1 mm
Max. switching frequency	1200 Hz
Max. output current	200 mA
Voltage drop	2 V
Short circuit current rating	Pulsed
Operational voltage range DC	10 V...30 V
Residual ripple	+/- 20 %
No-load supply current	10 mA
Reverse polarity protection	For all electrical connections
Electrical connection	3-pin M12x1 Plugs
Size	M30x1.5
Type of mounting	Via lock nut
Tightening torque	40 Nm
Mounting type	Flush
Product weight	100 g

Feature	Value
Material housing	Brass PA PBTP Chrome-plated
Switching status indication	Yellow LED
Ambient temperature with moving cable	-5 °C...70 °C
Degree of protection	IP67
Immunity to surge	0.8 kV
LABS (PWIS) conformity	VDMA24364-B2-L
Pollution degree	3
Additional information for sensor selection	with standard sensing distance
Electrical output	PNP
Selection of sensor design	Standard