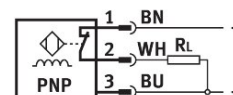
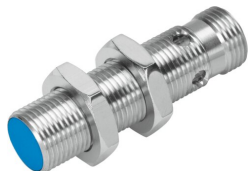


# Proximity sensor SIEN-M12B-PO-S-L

Part number: 150407

**FESTO**



## Data sheet

Feature	Value
Conforms to standard	EN 60947-5-2
Approval	RCM trademark c UL us listed (OL)
CE mark (see declaration of conformity)	To EU EMC Directive In accordance with EU RoHS Directive
UKCA marking (see declaration of conformity)	according to UK instructions for EMC (UK-E) according to UK RoHS instructions (UK-R)
Rated operating distance	2 mm
Assured operating distance	1.62 mm
Reduction factors	Aluminium = 0.4 Stainless steel St 18/8 = 0.6 Copper = 0.3 Brass = 0.5 Steel St 37 = 1.0
Ambient temperature	-25 °C...70 °C
Repetition accuracy with constant conditions	0.1 mm
Switching output	PNP
Switching element function	N/C contact
Hysteresis	0.18 mm
Max. switching frequency	3000 Hz
Max. output current	200 mA
Voltage drop	2 V
Inductive protective circuit	Integrated
Short circuit current rating	Pulsed
Operational voltage range DC	10 V...30 V
Residual ripple	± 10%
No-load supply current	10 mA
Reverse polarity protection	For all electrical connections
Electrical connection 1, connection type	Plugs
Electrical connection 1, connector system	M12x1, A-coded to EN 61076-2-101
Electrical connection 1, number of connections/cores	4
Electrical connection 1, type of mounting	Screw-type lock Not rotatable
Electrical connection 1, compatible type of mounting	Compatible with rotatable screw-type lock

Feature	Value
Size	M12x1
Type of mounting	Via lock nut
Mounting type	Flush
Product weight	30 g
Material housing	Brass PBTP Nickel-plated
Switching status indication	Yellow LED
Ambient temperature with moving cable	-5 °C...70 °C
Degree of protection	IP65 IP67
Corrosion resistance class CRC	2 - Moderate corrosion stress
LABS (PWIS) conformity	VDMA24364-B2-L
Additional information for sensor selection	with standard sensing distance
Electrical output	PNP
Selection of sensor design	Standard