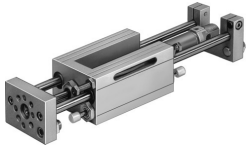


Linear drive unit SLE-32- -KF-A

Part number: 150093

FESTO



Data sheet

| Feature | Value |
|--|--|
| Stroke | 10 mm...500 mm |
| Piston diameter | 32 mm |
| Operating mode, drive unit | Yoke |
| Cushioning | Shock absorber, hard characteristic curve |
| Mounting position | optional |
| Guide | Recirculating ball bearing guide |
| Design | Guidance |
| Position detection | Via proximity switch Via inductive sensors |
| Operating pressure | 0.15 MPa...1.2 MPa 1.5 bar...12 bar |
| Mode of operation | Double-acting |
| Operating medium | Compressed air to ISO 8573-1:2010 [7:4:4] |
| Note on operating and pilot medium | Lubricated operation possible (in which case lubricated operation will always be required) |
| Corrosion resistance class CRC | 0 - No corrosion stress |
| LABS (PWIS) conformity | VDMA24364-B2-L |
| Ambient temperature | -20 °C...80 °C |
| Theoretical force at 0.6 MPa (6 bar, 87 psi), return stroke | 415 N |
| Theoretical force at 0.6 MPa (6 bar, 87 psi), advance stroke | 483 N |
| Moving mass for 0 mm stroke | 1500 g |
| Additional moving mass per 10 mm stroke | 31 g |
| Basic weight for 0 mm stroke | 4300 g |
| Additional weight per 10 mm stroke | 57 g |
| Pneumatic connection | G1/8 |
| Material cover | Die-cast aluminium |
| Material seals | PA |
| Material housing | Die-cast aluminium |
| Material piston rod | High-alloy steel |
| Material cylinder barrel | Wrought aluminium alloy |