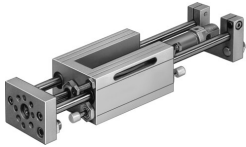


# Linear drive unit

## SLE-16- -KF-A

Part number: 150090

**FESTO**



## Data sheet

Feature	Value
Stroke	10 mm...200 mm
Piston diameter	16 mm
Operating mode, drive unit	Yoke
Cushioning	Shock absorber, hard characteristic curve
Mounting position	optional
Guide	Recirculating ball bearing guide
Design	Guidance
Position detection	Via proximity switch Via inductive sensors
Operating pressure	0.25 MPa...1 MPa 2.5 bar...10 bar
Mode of operation	Double-acting
Operating medium	Compressed air to ISO 8573-1:2010 [7:4:4]
Note on operating and pilot medium	Lubricated operation possible (in which case lubricated operation will always be required)
Corrosion resistance class CRC	0 - No corrosion stress
LABS (PWIS) conformity	VDMA24364-B2-L
Ambient temperature	-20 °C...80 °C
Theoretical force at 0.6 MPa (6 bar, 87 psi), return stroke	104 N
Theoretical force at 0.6 MPa (6 bar, 87 psi), advance stroke	121 N
Moving mass for 0 mm stroke	230 g
Additional moving mass per 10 mm stroke	8 g
Basic weight for 0 mm stroke	913 g
Additional weight per 10 mm stroke	13 g
Pneumatic connection	M5
Material cover	Wrought aluminium alloy
Material seals	PA
Material housing	Aluminium
Material piston rod	High-alloy stainless steel
Material cylinder barrel	High-alloy stainless steel