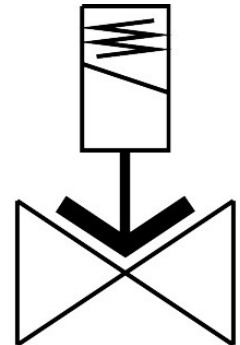


# Solenoid valve

## VZWF-L-M22C-G2-500-3AP4-6

Part number: 1492309

**FESTO**



### Data sheet

Feature	Value
Design	Diaphragm valve Force pilot operated
Type of actuation	Electric
Sealing principle	Soft
Mounting position	Solenoid vertical
Type of mounting	In-line installation
Connection Process valve	G2
Electrical connection	Type A Plugs To EN 175301-803 Square design
Nominal size	50 mm
Valve function	2/2-way, closed, monostable
Manual override	None
Flow direction	Non-reversible
Medium	Compressed air to ISO 8573-1:2010 [7:::] Inert gases Mineral oil Water Neutral fluids Other media on request
Nominal pressure PN	40
Pressure difference	0 MPa 0 bar 0 psi
Characteristic coil data	230 V AC: 50/60 Hz, pick-up power 30.0 VA, holding power 30.0 VA
Permissible voltage fluctuations	+/- 10 %
Medium pressure	0 MPa...0.6 MPa 0 bar...6 bar 0 psi...87 psi

Feature	Value
Max. viscosity	22 mm <sup>2</sup> /s
Media temperature	-10 °C...80 °C
Ambient temperature	-10 °C...35 °C
Leakage rate to EN 12266-1	A
Flow rate Kv	28 m <sup>3</sup> /h
Standard nominal flow rate (standardised to DIN 1343)	29900 l/min
Switching time on	1220 ms
Switching time off	2140 ms
Note on materials	RoHS-compliant
LABS (PWIS) conformity	VDMA24364 zone III
Material housing	Cast brass
Material number housing	CW617N
Material seals	NBR
Material screws	High-alloy stainless steel
Material number screw	1.4301
Product weight	6500 g
CE mark (see declaration of conformity)	In accordance with EU Pressure Equipment Directive To EU Low Voltage Directive
UKCA marking (see declaration of conformity)	to UK Pressure Equipment Regulations To UK regulations for electrical equipment
Degree of protection	IP65
Corrosion resistance class CRC	1 - Low corrosion stress