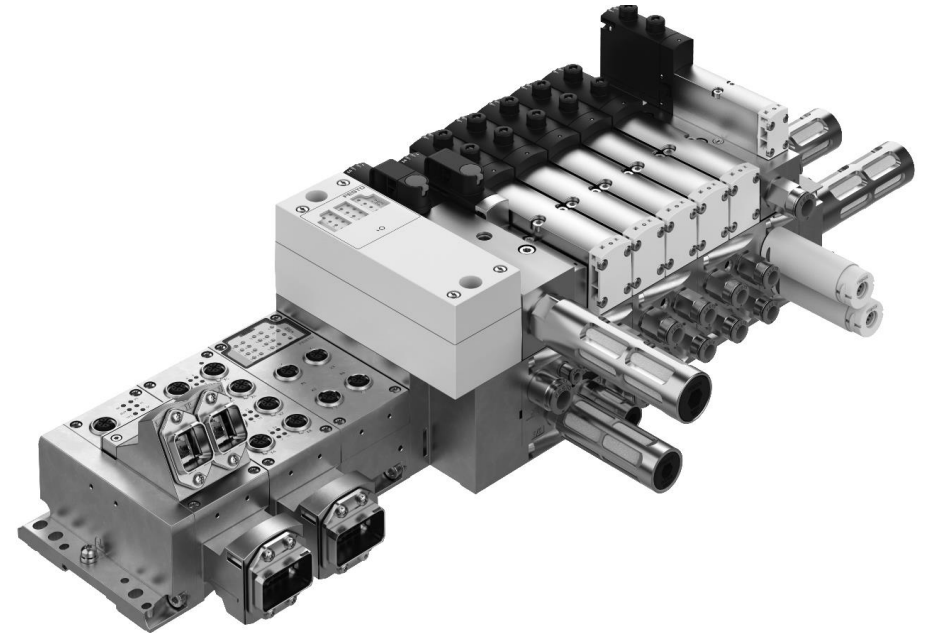
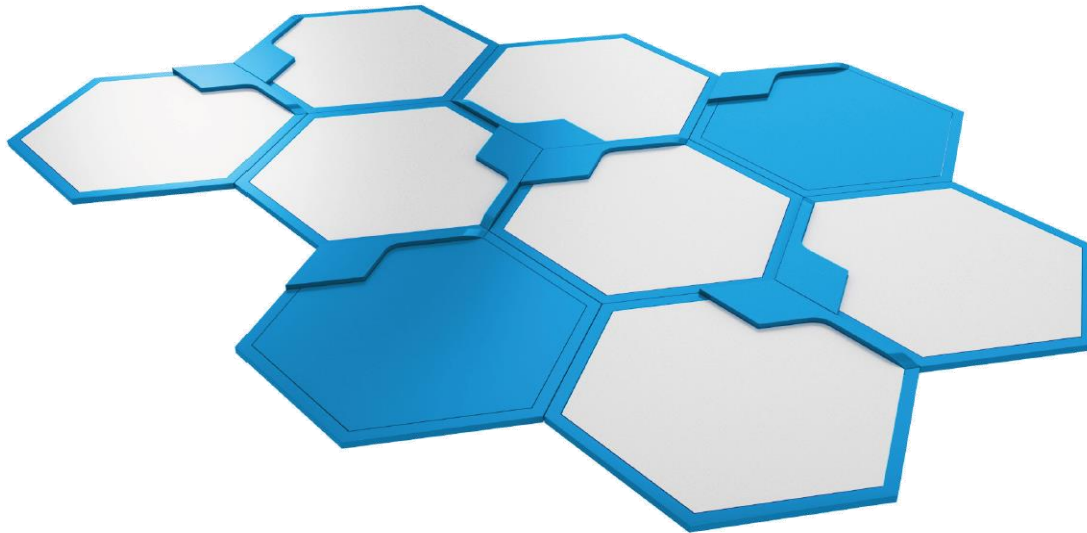


CPX/VTSA-F-CB

ETHERNET-IP/ETHERCAT
CONFIGURATION RULES



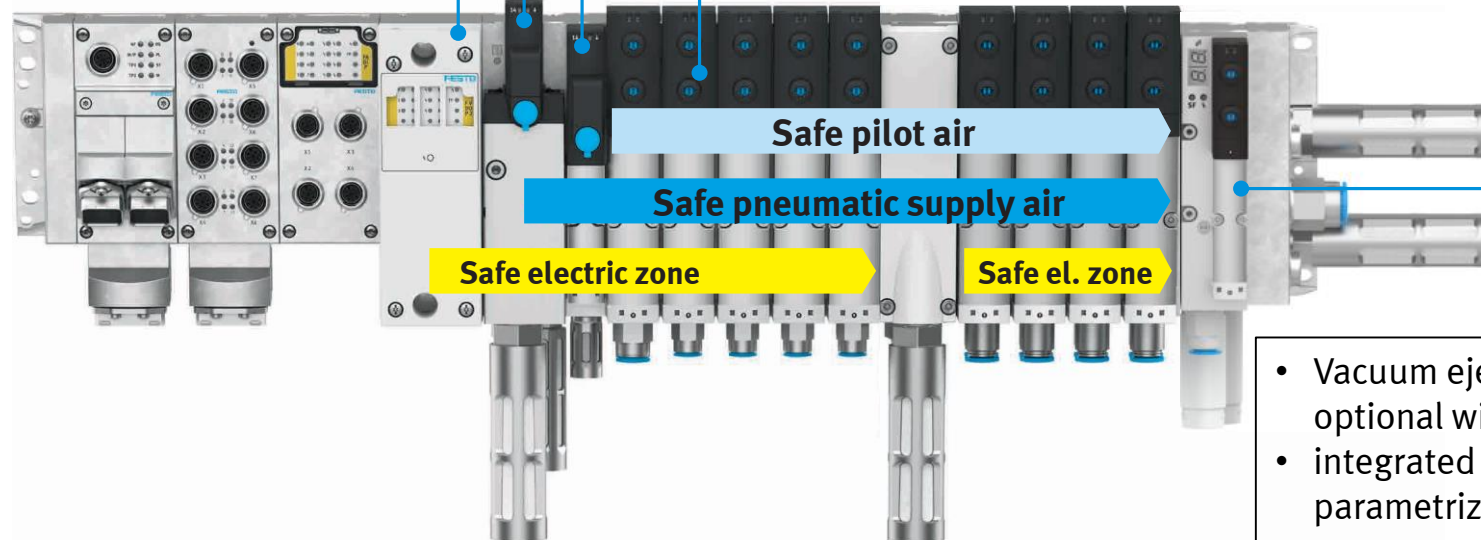
CPX/VTSA-F-CB – Brief description

- New pneumatic interfaces, optional with safety
- Up to 3 Safety-Shutdown-Groups possible with CPX interface:
3xM12 (external)
- Realization of integrated control functions and flexible Safety-Shutdown-Groups, up to PL d cat. 3

Soft-start valve with integrated pressure switch allows diagnosis of exhaust condition

Pilot air control valve with integrated pressure switch

- Up to 4 voltage zones possible in pneumatic part
- Serial communication in pneumatic part, up to 96 valves



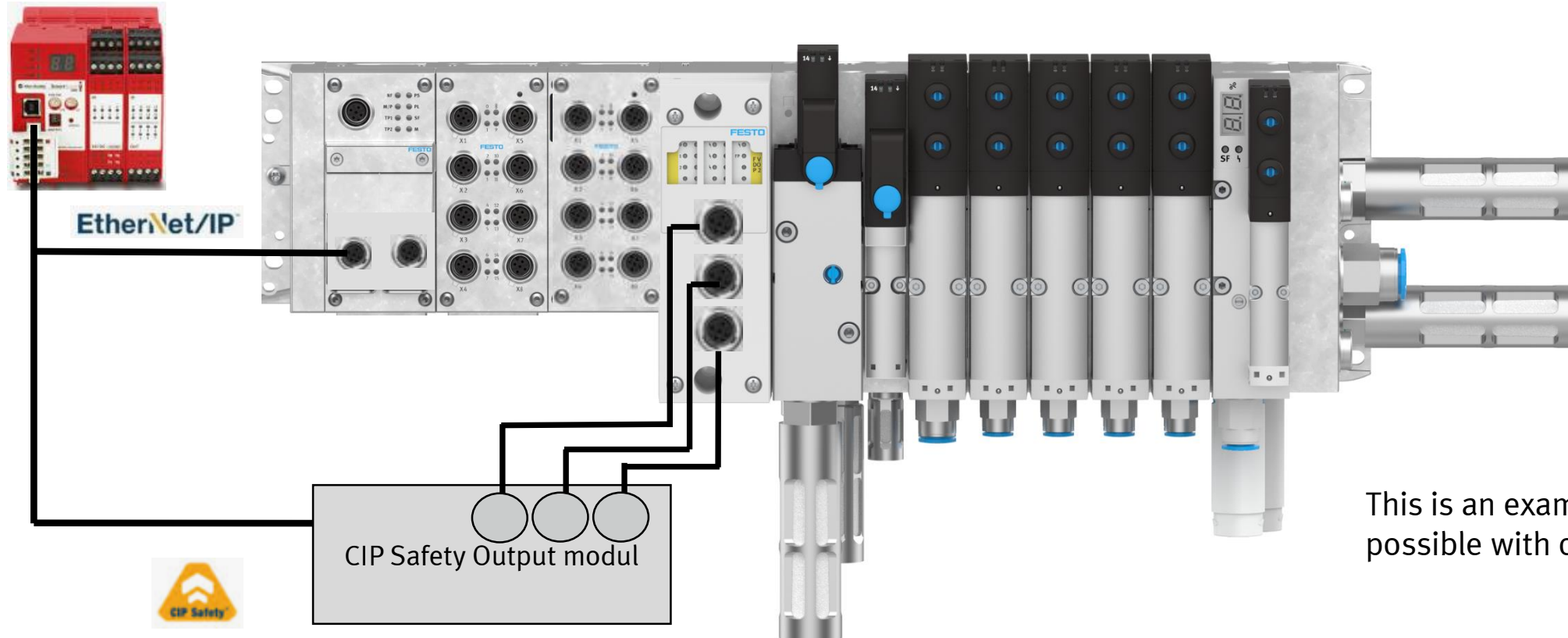
- Vacuum ejector with air saving circuit, optional with power eject pulse
- integrated connection, parametrization via CPX-system

CPX/VTSA-F-CB: New VTSA pneumatic interfaces with FB36 (Ethernet-IP)



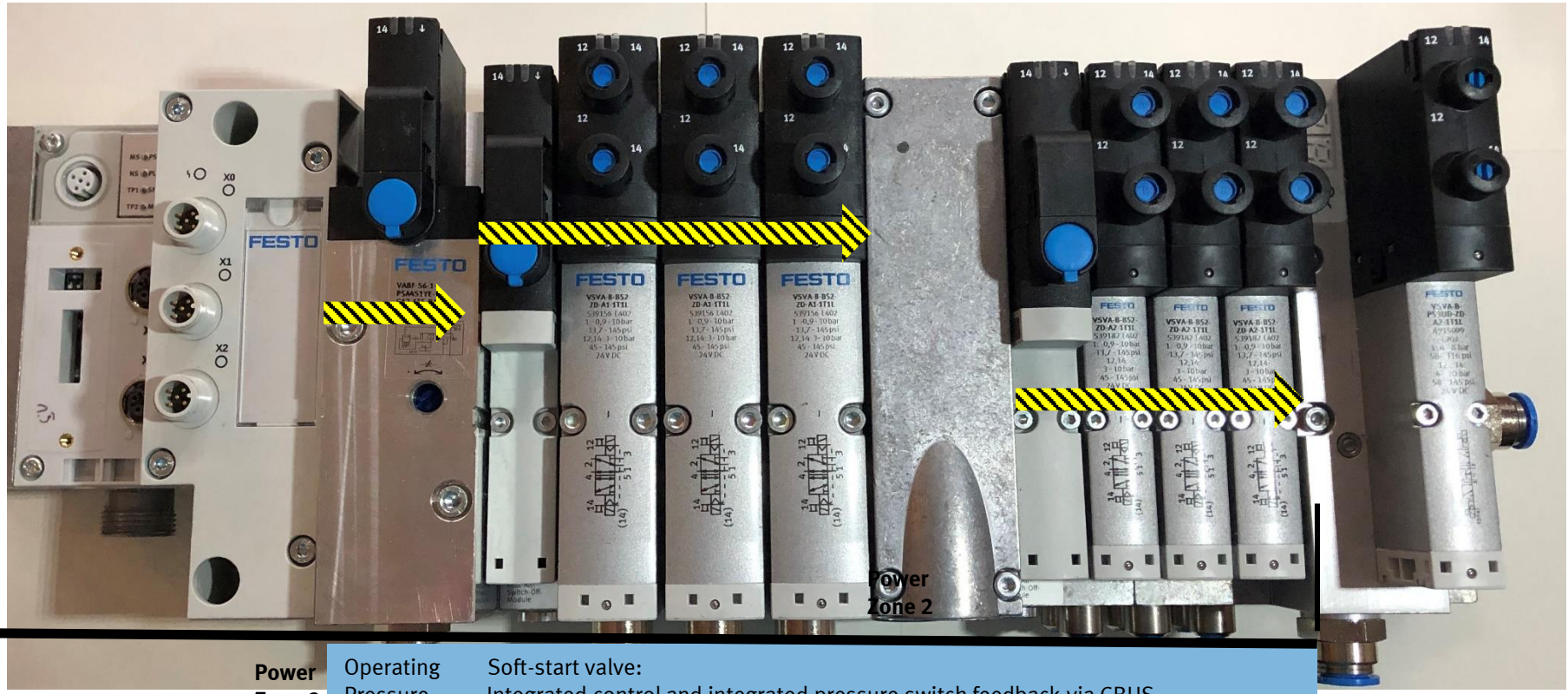
Pneumatic interface with external supply of 3 potentials (M12). Incl. output driver for 24 coils. diagnosis via IO tags

CPX/VTSA-F-CB with serial communication, 3xM12 for zones and vacuum integration



This is an example. It is also possible with other safety switches.

CPX/VTSA-F-CB with serial communication and safe zones



Internal serial CBUS communication

Power Zone 2

Operating Pressure

Soft-start valve: Integrated control and integrated pressure switch feedback via CBUS

Power Zone 1

Pilot Pressure: Integrated control and integrated pressure switch feedback via CBUS

Power Zone 3

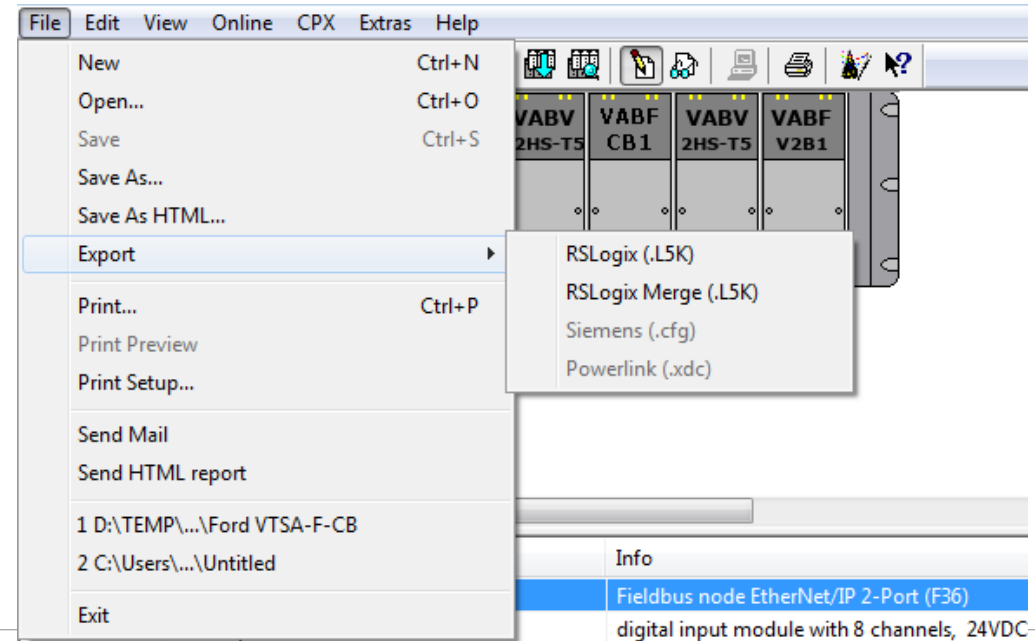
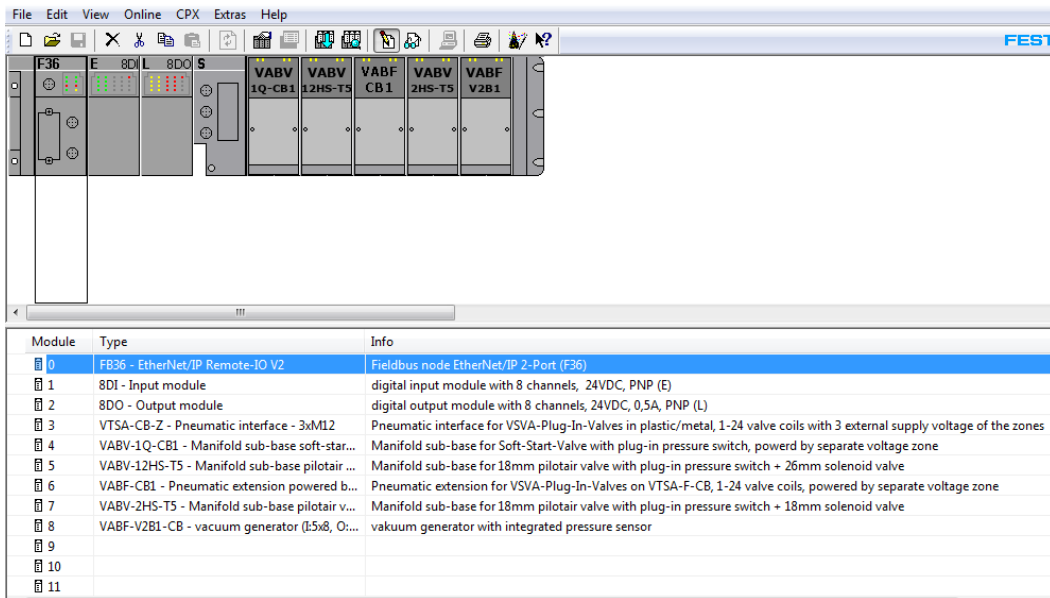
Pilot Pressure: Integrated control and integrated pressure switch feedback via CBUS

CPX | VTSA-F-CB configuration for FB36

Terminal configuration

- ➔ A way to configure a terminal in a Rockwell environment, is to use the .L5K export function of the FMT tool
- Go „online“ and upload the configuration in to the FESTO Maintenance (FMT) or
 - Configure „offline“

Download a manual for the export process [here](#)



CPX | VTSA-F-CB configuration for FB36

Terminal configuration

- ▶ Controller WorkingProject
- ▶ Tasks
- ▶ Motion Groups
- ▶ Assets
- Logical Model
- ▶ I/O Configuration
 - ▶ PointIO
 - ▶ [0] 1769-L18ER-BB1B WorkingProject
 - ▶ Embedded I/O
 - ▶ Expansion I/O, 0 Modules
 - ▶ Ethernet
 - ▶ 1769-L18ER-BB1B WorkingProject
 - ▶ ETHERNET-MODULE Festo_CPX

Controller Tags - WorkingProject(controller) x					
Scope: WorkingProject		Show: All Tags		Enter Name Filter...	
Name	Alias For	Base Tag	Data Type	Description	
▶ Festo_CPX:C			AB:ETHERNET_MODULE:C:0		
▶ Festo_CPX:I			AB:ETHERNET_MODULE_SINT_16...		
▶ Festo_CPX:I.Data			SINT[16]		
▶ Festo_CPX:I.Data[0]			SINT	#0: FB36 - (I0)-LB	
▶ Festo_CPX:I.Data[1]			SINT	#0: FB36 - (I0)-HB	
▶ Festo_CPX:I.Data[2]			SINT	#1: VTSA-CB-Z - (I0-7)	
▶ Festo_CPX:I.Data[3]			SINT	#1: VTSA-CB-Z - (I8-15)	
▶ Festo_CPX:I.Data[4]			SINT	#1: VTSA-CB-Z - (I16-23)	
▶ Festo_CPX:I.Data[5]			SINT	#2: VABV-1Q-CB - (I0-7)	
▶ Festo_CPX:I.Data[6]			SINT	#3: VABV-12HS-T5 - (I0-7)	
▶ Festo_CPX:I.Data[7]			SINT	#4: VABF-CB1 - (I0-7)	
▶ Festo_CPX:I.Data[8]			SINT	#4: VABF-CB1 - (I8-15)	
▶ Festo_CPX:I.Data[9]			SINT	#4: VABF-CB1 - (I16-23)	
▶ Festo_CPX:I.Data[10]			SINT	#5: VABV-2HS-T5 - (I0-7)	
▶ Festo_CPX:I.Data[11]			SINT	#6: VABF-V2B1-CB - (I0)	
▶ Festo_CPX:I.Data[12]			SINT	#6: VABF-V2B1-CB - (I1)	
▶ Festo_CPX:I.Data[13]			SINT	#6: VABF-V2B1-CB - (I2)	
▶ Festo_CPX:I.Data[14]			SINT	#6: VABF-V2B1-CB - (I3)	
▶ Festo_CPX:I.Data[15]			SINT	#6: VABF-V2B1-CB - (I4)	

CPX | VTSA-CB configuration for FB36

Terminal configuration

Controller Tags - WorkingProject(controller) x

Scope: WorkingProject Show: All Tags Enter Name Filter...

Name	Alias For	Base Tag	Data Type	Description
▲ Festo_CPX:O			AB:ETHERNET_MODULE_SINT_16...	
▲ Festo_CPX:O.Data			SINT[16]	
▶ Festo_CPX:O.Data[0]			SINT	#0: FB36 - (O1)-LB
▶ Festo_CPX:O.Data[1]			SINT	#0: FB36 - (O1)-HB
▶ Festo_CPX:O.Data[2]			SINT	#1: VTSA-CB-Z - (O24-31)
▶ Festo_CPX:O.Data[3]			SINT	#1: VTSA-CB-Z - (O32-39)
▶ Festo_CPX:O.Data[4]			SINT	#1: VTSA-CB-Z - (O40-47)
▶ Festo_CPX:O.Data[5]			SINT	#2: VABV-1Q-CB - (O8-15)
▶ Festo_CPX:O.Data[6]			SINT	#3: VABV-12HS-T5 - (O8-15)
▶ Festo_CPX:O.Data[7]			SINT	#4: VABF-CB1 - (O24-31)
▶ Festo_CPX:O.Data[8]			SINT	#4: VABF-CB1 - (O32-39)
▶ Festo_CPX:O.Data[9]			SINT	#4: VABF-CB1 - (O40-47)
▶ Festo_CPX:O.Data[10]			SINT	#5: VABV-2HS-T5 - (O8-15)
▶ Festo_CPX:O.Data[11]			SINT	#6: VABF-V2B1-CB - (O5)
▶ Festo_CPX:O.Data[12]			SINT	#6: VABF-V2B1-CB - (O6)
▶ Festo_CPX:O.Data[13]			SINT	#6: VABF-V2B1-CB - (O7)
▶ Festo_CPX:O.Data[14]			SINT	#6: VABF-V2B1-CB - (O8)
▶ Festo_CPX:O.Data[15]			SINT	#6: VABF-V2B1-CB - (O9)

