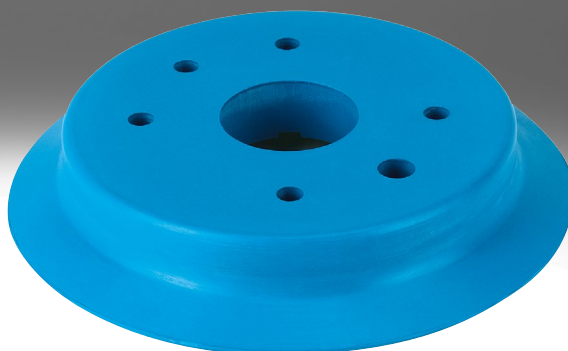


## Zuordnung Vakuumsaugnapfe ESV zu Vakuumsaugern ESS

**FESTO**



## Typenschlüssel

<b>001</b>	<b>Baureihe</b>	
<b>ESV</b>	Vakuumsaugnapf	

<b>002</b>	<b>Saugergröße</b>	
<b>20</b>	20 mm Durchmesser	
<b>30</b>	30 mm Durchmesser	
<b>40</b>	40 mm Durchmesser	
<b>50</b>	50 mm Durchmesser	
<b>60</b>	60 mm Durchmesser	
<b>80</b>	80 mm Durchmesser	
<b>100</b>	100 mm Durchmesser	
<b>150</b>	150 mm Durchmesser	
<b>200</b>	200 mm Durchmesser	

<b>003</b>	<b>Saugerform</b>	
<b>S</b>	Rund, Standard	
<b>G</b>	Rund, Glockenform	
<b>E</b>	Rund, extratief	
<b>B</b>	Rund, Faltenbalg, 1,5-fach	
<b>C</b>	Rund, Faltenbalg, 3,5-fach	

<b>004</b>	<b>Werkstoff</b>	
<b>F</b>	Fluorkautschuk	
<b>N</b>	Nitrilkautschuk	
<b>S</b>	Silikon	
<b>U</b>	Polyurethan	
<b>T</b>	Polyurethan-Hochleistungselastomer	

<b>005</b>	<b>Zusatzeigenschaften</b>	
	Ohne	
<b>A</b>	Antistatisch	

## Für ESS-S... (Rund, Standard)

Bestellangaben				
Sauger-Ø [mm]	ESS		ESV	
	Teile-Nr.	Typ	Teile-Nr.	Typ
<b>Fluorkautschuk</b>				
2	189267	ESS-2-SF	-	
4	189272	ESS-4-SF	-	
6	189277	ESS-6-SF	-	
8	189282	ESS-8-SF	-	
10	189287	ESS-10-SF	-	
15	189292	ESS-15-SF	-	
20	189297	ESS-20-SF	190982	ESV-20-SF
30	189302	ESS-30-SF	190987	ESV-30-SF
40	189307	ESS-40-SF	190992	ESV-40-SF
50	189312	ESS-50-SF	190997	ESV-50-SF
60	189317	ESS-60-SF	191002	ESV-60-SF
80	189321	ESS-80-SF	191006	ESV-80-SF
100	189325	ESS-100-SF	191010	ESV-100-SF
150	189329	ESS-150-SF	191014	ESV-150-SF
200	189333	ESS-200-SF	191018	ESV-200-SF
<b>Nitrilkautschuk</b>				
2	189264	ESS-2-SN	-	
4	189269	ESS-4-SN	-	
6	189274	ESS-6-SN	-	
8	189279	ESS-8-SN	-	
10	189284	ESS-10-SN	-	
15	189289	ESS-15-SN	-	
20	189294	ESS-20-SN	190979	ESV-20-SN
30	189299	ESS-30-SN	190984	ESV-30-SN
40	189304	ESS-40-SN	190989	ESV-40-SN
50	189309	ESS-50-SN	190994	ESV-50-SN
60	189314	ESS-60-SN	190999	ESV-60-SN
80	189318	ESS-80-SN	191003	ESV-80-SN
100	189322	ESS-100-SN	191007	ESV-100-SN
150	189326	ESS-150-SN	191011	ESV-150-SN
200	189330	ESS-200-SN	191015	ESV-200-SN
<b>Butadien-Kautschuk, antistatisch</b>				
2	189268	ESS-2-SNA	-	
4	189273	ESS-4-SNA	-	
6	189278	ESS-6-SNA	-	
8	189283	ESS-8-SNA	-	
10	189288	ESS-10-SNA	-	
15	189293	ESS-15-SNA	-	
20	189298	ESS-20-SNA	190983	ESV-20-SNA
30	189303	ESS-30-SNA	190988	ESV-30-SNA
40	189308	ESS-40-SNA	190993	ESV-40-SNA
50	189313	ESS-50-SNA	190998	ESV-50-SNA

Für ESS-S... (Rund, Standard)

<b>Bestellangaben</b>				
Sauger- $\varnothing$ [mm]	ESS		ESV	
	Teile-Nr.	Typ	Teile-Nr.	Typ
<b>Silikon</b>				
2	189266	ESS-2-SS	–	
4	189271	ESS-4-SS	–	
6	189276	ESS-6-SS	–	
8	189281	ESS-8-SS	–	
10	189286	ESS-10-SS	–	
15	189291	ESS-15-SS	–	
20	189296	ESS-20-SS	190981	ESV-20-SS
30	189301	ESS-30-SS	190986	ESV-30-SS
40	189306	ESS-40-SS	190991	ESV-40-SS
50	189311	ESS-50-SS	190996	ESV-50-SS
60	189316	ESS-60-SS	191001	ESV-60-SS
80	189320	ESS-80-SS	191005	ESV-80-SS
100	189324	ESS-100-SS	191009	ESV-100-SS
150	189328	ESS-150-SS	191013	ESV-150-SS
200	189332	ESS-200-SS	191017	ESV-200-SS
<b>Polyurethan</b>				
2	189265	ESS-2-SU	–	
4	189270	ESS-4-SU	–	
6	189275	ESS-6-SU	–	
8	189280	ESS-8-SU	–	
10	189285	ESS-10-SU	–	
15	189290	ESS-15-SU	–	
20	189295	ESS-20-SU	190980	ESV-20-SU
30	189300	ESS-30-SU	190985	ESV-30-SU
40	189305	ESS-40-SU	190990	ESV-40-SU
50	189310	ESS-50-SU	190995	ESV-50-SU
60	189315	ESS-60-SU	191000	ESV-60-SU
80	189319	ESS-80-SU	191004	ESV-80-SU
100	189323	ESS-100-SU	191008	ESV-100-SU
150	189327	ESS-150-SU	191012	ESV-150-SU
200	189331	ESS-200-SU	191016	ESV-200-SU

## Für ESS-E... (Rund, extratief)

Bestellangaben				
Sauger- ø [mm]	ESS		ESV	
	Teile-Nr.	Typ	Teile-Nr.	Typ
<b>Fluorkautschuk</b>				
15	189337	ESS-15-EF	–	
20	189341	ESS-20-EF	191026	ESV-20-EF
30	189345	ESS-30-EF	191030	ESV-30-EF
40	189349	ESS-40-EF	191034	ESV-40-EF
50	189353	ESS-50-EF	191038	ESV-50-EF
60	189357	ESS-60-EF	191042	ESV-60-EF
80	189361	ESS-80-EF	191046	ESV-80-EF
100	189365	ESS-100-EF	191050	ESV-100-EF
<b>Nitrilkautschuk</b>				
15	189334	ESS-15-EN	–	
20	189338	ESS-20-EN	191023	ESV-20-EN
30	189342	ESS-30-EN	191027	ESV-30-EN
40	189346	ESS-40-EN	191031	ESV-40-EN
50	189350	ESS-50-EN	191035	ESV-50-EN
60	189354	ESS-60-EN	191039	ESV-60-EN
80	189358	ESS-80-EN	191043	ESV-80-EN
100	189362	ESS-100-EN	191047	ESV-100-EN
<b>Silikon</b>				
15	189336	ESS-15-ES	–	
20	189340	ESS-20-ES	191025	ESV-20-ES
30	189344	ESS-30-ES	191029	ESV-30-ES
40	189348	ESS-40-ES	191033	ESV-40-ES
50	189352	ESS-50-ES	191037	ESV-50-ES
60	189356	ESS-60-ES	191041	ESV-60-ES
80	189360	ESS-80-ES	191045	ESV-80-ES
100	189364	ESS-100-ES	191049	ESV-100-ES
<b>Polyurethan</b>				
15	189335	ESS-15-EU	–	
20	189339	ESS-20-EU	191024	ESV-20-EU
30	189343	ESS-30-EU	191028	ESV-30-EU
40	189347	ESS-40-EU	191032	ESV-40-EU
50	189351	ESS-50-EU	191036	ESV-50-EU
60	189355	ESS-60-EU	191040	ESV-60-EU
80	189359	ESS-80-EU	191044	ESV-80-EU
100	189363	ESS-100-EU	191048	ESV-100-EU

Für ESS-B... (Rund, Faltenbalg, 1,5-fach)

<b>Bestellangaben</b>				
Sauger- $\varnothing$ [mm]	ESS		ESV	
	Teile-Nr.	Typ	Teile-Nr.	Typ
<b>Nitrilkautschuk</b>				
10	189374	ESS-10-BN	–	
20	189378	ESS-20-BN	191054	ESV-20-BN
30	189382	ESS-30-BN	191057	ESV-30-BN
40	189386	ESS-40-BN	191060	ESV-40-BN
50	189390	ESS-50-BN	191063	ESV-50-BN
80	189394	ESS-80-BN	191066	ESV-80-BN
<b>Silikon</b>				
10	189376	ESS-10-BS	–	
20	189380	ESS-20-BS	191056	ESV-20-BS
30	189384	ESS-30-BS	191059	ESV-30-BS
40	189388	ESS-40-BS	191062	ESV-40-BS
50	189392	ESS-50-BS	191065	ESV-50-BS
80	189396	ESS-80-BS	191068	ESV-80-BS
<b>Polyurethan</b>				
10	189375	ESS-10-BU	–	
20	189379	ESS-20-BU	191055	ESV-20-BU
30	189383	ESS-30-BU	191058	ESV-30-BU
40	189387	ESS-40-BU	191061	ESV-40-BU
50	189391	ESS-50-BU	191064	ESV-50-BU
80	189395	ESS-80-BU	191067	ESV-80-BU

Für ESS-B... (Rund, Faltenbalg, 1,5-fach)

<b>Bestellangaben</b>					
Sauger-Ø [mm]	Vakuumschluss	ESS		ESV	
		Teile-Nr.	Typ	Teile-Nr.	Typ
40	M6	525989	ESS-40-BT-M6	-	
	M10	525990	ESS-40-BT-M10	-	
	G1/4 Innengewinde	525991	ESS-40-BT-G1/4-I	-	
	G1/4 Außengewinde	525992	ESS-40-BT-G1/4	-	
	-	-		526006	ESV-40-BT
50	M6	525993	ESS-50-BT-M6	-	
	M10	525994	ESS-50-BT-M10	-	
	G1/4 Innengewinde	525995	ESS-50-BT-G1/4-I	-	
	G1/4 Außengewinde	525996	ESS-50-BT-G1/4	-	
	-	-		526007	ESV-50-BT
80	M10	525997	ESS-80-BT-M10	-	
	G1/4 Innengewinde	525998	ESS-80-BT-G1/4-I	-	
	G1/4 Außengewinde	525999	ESS-80-BT-G1/4	-	
	-	-		526008	ESV-80-BT

Für ESS-C... (Rund, Faltenbalg, 3,5-fach)

<b>Bestellangaben</b>				
Sauger-Ø [mm]	ESS		ESV	
	Teile-Nr.	Typ	Teile-Nr.	Typ
<b>Nitrilkautschuk</b>				
10	189398	ESS-10-CN	–	
20	189400	ESS-20-CN	191071	ESV-20-CN
30	189402	ESS-30-CN	191073	ESV-30-CN
40	189404	ESS-40-CN	191075	ESV-40-CN
50	189406	ESS-50-CN	191077	ESV-50-CN
<b>Silikon</b>				
10	189399	ESS-10-CS	–	
20	189401	ESS-20-CS	191072	ESV-20-CS
30	189403	ESS-30-CS	191074	ESV-30-CS
40	189405	ESS-40-CS	191076	ESV-40-CS
50	189407	ESS-50-CS	191078	ESV-50-CS



Für ESS-G... (Rund, Glockenform)

Bestellangaben				ESV	
Sauger-Ø [mm]	Vakuumschluss	ESS Teile-Nr.	Typ	Teile-Nr.	Typ
30	M6	525968	ESS-30-GT-M6	-	
	M10	525969	ESS-30-GT-M10	-	
	G1/8 Innengewinde	525970	ESS-30-GT-G1/8-I	-	
	G1/8 Außengewinde	525971	ESS-30-GT-G1/8	-	
	-	-		526000	ESV-30-GT
40	M6	525972	ESS-40-GT-M6	-	
	M10	525973	ESS-40-GT-M10	-	
	G1/4 Innengewinde	525974	ESS-40-GT-G1/4-I	-	
	G1/4 Außengewinde	525975	ESS-40-GT-G1/4	-	
	-	-		526001	ESV-40-GT
50	M6	525976	ESS-50-GT-M6	-	
	M10	525977	ESS-50-GT-M10	-	
	G1/4 Innengewinde	525978	ESS-50-GT-G1/4-I	-	
	G1/4 Außengewinde	525979	ESS-50-GT-G1/4	-	
	-	-		526002	ESV-50-GT
60	M10	525980	ESS-60-GT-M10	-	
	G1/4 Innengewinde	525981	ESS-60-GT-G1/4-I	-	
	G1/4 Außengewinde	525982	ESS-60-GT-G1/4	-	
	-	-		526003	ESV-60-GT
80	M10	525983	ESS-80-GT-M10	-	
	G1/4 Innengewinde	525984	ESS-80-GT-G1/4-I	-	
	G1/4 Außengewinde	525985	ESS-80-GT-G1/4	-	
	-	-		526004	ESV-80-GT
100	M10	525986	ESS-100-GT-M10	-	
	G1/4 Innengewinde	525987	ESS-100-GT-G1/4-I	-	
	G1/4 Außengewinde	525988	ESS-100-GT-G1/4	-	
	-	-		526005	ESV-100-GT