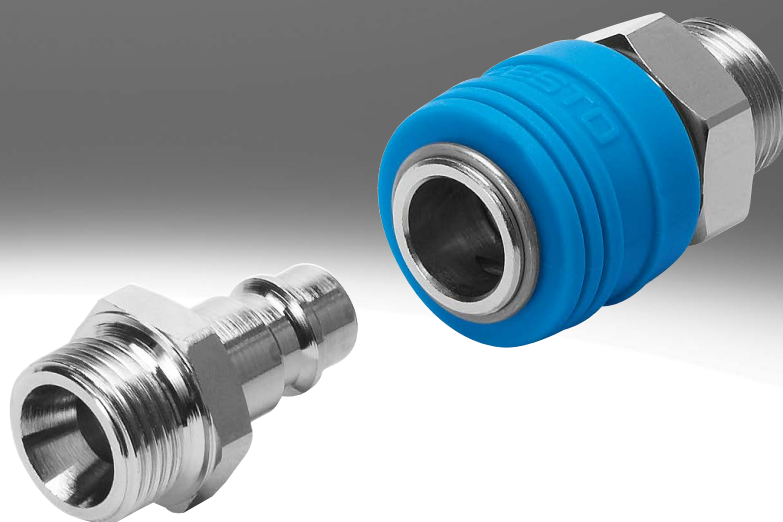


Operating mode coupling sockets/quick coupling plugs KD/KS

FESTO

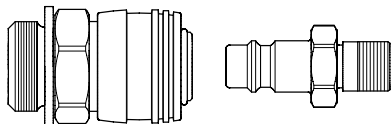


Key features

Operating mode

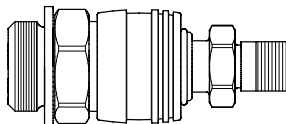
Plug-in coupling with coupling socket KD and quick coupling plug KS, shut off on one or both ends

Coupling



Push the plug into the socket to lock the coupling.
The plug automatically engages with an audible click when in a specific position.

Decoupling



To unlock, push the releasing sleeve.

When removing the quick coupling plug, it is important to hold it until it is fully exhausted.

Coupling/tubing combination options

Tubing		Coupling socket/plug				
		KD1/KS1	KD2/KS2	KD3/KS3	KD4/KS4	NPHS-D6/NPHS-S6
With standard I.D.	Polyurethane					
	PU-9	–	–	–	■	■
With standard O.D.	Polyurethane					
	PUN-3	■	–	–	–	–
	PUN-4	–	■	–	–	–
	PUN-6	–	■	■	■	–
	PUN-8	–	–	■	■	–
	Polyamide					
	PAN-4	–	■	–	–	–
	PAN-6	–	■	■	■	–
PAN-8	–	–	■	■	–	

Coupling socket/plug combination options

Connection	Size 1		Size 2		Size 3 ¹⁾		Size 4 ¹⁾		Size: 6	
	Socket KD1	Plug KS1	Socket KD2	Plug KS2	Socket KD3	Plug KS3	Socket KD4	Plug KS4	Socket NPHS-D6	Plug NPHS-S6
Male thread										
M3	■	–	–	–	–	–	–	–	–	–
M5	–	–	■	■	–	–	–	–	–	–
G1/8	–	–	–	–	■	■	–	–	■	■
G1/4	–	–	–	–	■	■	■	■	■	■
G3/8	–	–	–	–	–	–	■	■	■	■
G1/2	–	–	–	–	–	–	■	■	■	■
Female thread										
M5	–	–	■	■	–	–	–	–	–	–
G1/8	–	–	–	–	■	■	–	–	–	–
G1/4	–	–	–	–	■	■	■	■	■	■
G3/8	–	–	–	–	–	–	■	■	■	■
G1/2	–	–	–	–	–	–	■	■	■	■
Quick connector with union nut										
CK-3	–	–	■	■	–	–	–	–	–	–
CK-4	–	–	■	■	■	■	–	■	–	–
CK-6	–	–	–	–	■	■	■	■	–	–
CK-9	–	–	–	–	–	–	■	■	–	–
Barbed fitting										
CN-2	–	■	–	–	–	–	–	–	–	–
N-6	–	–	–	–	–	–	–	■	–	–
N-9	–	–	–	–	–	–	■	■	■	■

1) Coupling socket/quick coupling plug, shut-off at both ends: KD3-...-A-R thread G1/8 only, KD4-...-A-R thread G1/4 only