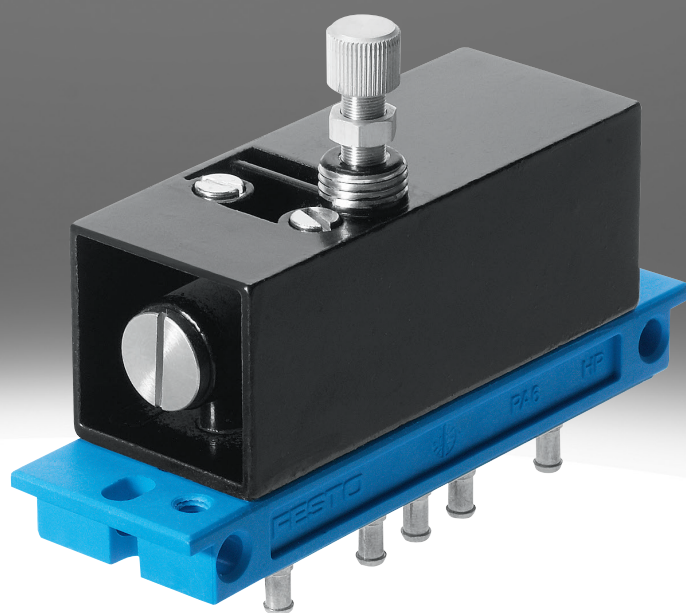


Time delay valve, M5 compact system

FESTO



Characteristics

At a glance

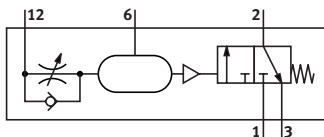
- The time delay valve consists of a pneumatically actuated 3-way valve and an upstream restrictor with additional volume. Depending on the setting of the restrictor, the directional control valve is switched with a delay. The reset is effected by a mechanical spring.
- M5 components with 2n connecting plates
- Control cabinet installation

Datasheet

General technical data			
Short type code	VLK	VZ	VZO
Pneumatic connection	–	PK-3	
Nominal size	2.5 mm	2 mm	
Standard nominal flow rate (standardised to DIN 1343)	90 l/min		60 l/min
Design	–	Poppet valve with spring return	
Type of actuation	–	Pneumatic	
Type of mounting	On mounting frame	Front panel mounting On mounting frame Either:	
lap	–	Underlap	
Adjustable delay time ¹⁾	–	0.25 ... 5 s	
Pause duration for reset	–	≥55 ms	≥50 ms
Repetition accuracy of time setting	–	± 0.5 s	

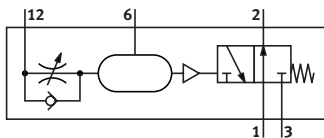
1) To achieve delay times that are longer than 5 s, an additional volume can be connected to the barbed connector 6 once the sealing cap has been removed. An increase in volume of 10 cm³ results in a time extension of approx. 5 s. Air reservoir VZS → Internet: vzs

Function – VZ, with switch-on delay



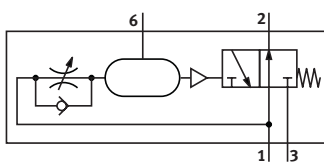
3/2-way valve, closed, monostable

Function – VZO, with switch-off delay



3/2-way valve, open, monostable

Function – VLK



3/2-way valve

Operating and environmental conditions

Operating and environmental conditions			
Short type code	VLK	VZ	VZO
Operating pressure	2.5 ... 8 bar		
Operating medium	–	Compressed air to ISO 8573-1:2010 [7:4:4]	
Note on operating and pilot medium	–	Lubricated operation not possible	
Note on forced dynamization	–	Switching frequency min. 1/week	
Ambient temperature	-10 ... 60°C		
Explosion protection	The information in the certificate must be observed! Zone 1 (ATEX) Zone 2 (ATEX) Zone 21 (ATEX) Zone 22 (ATEX)		–

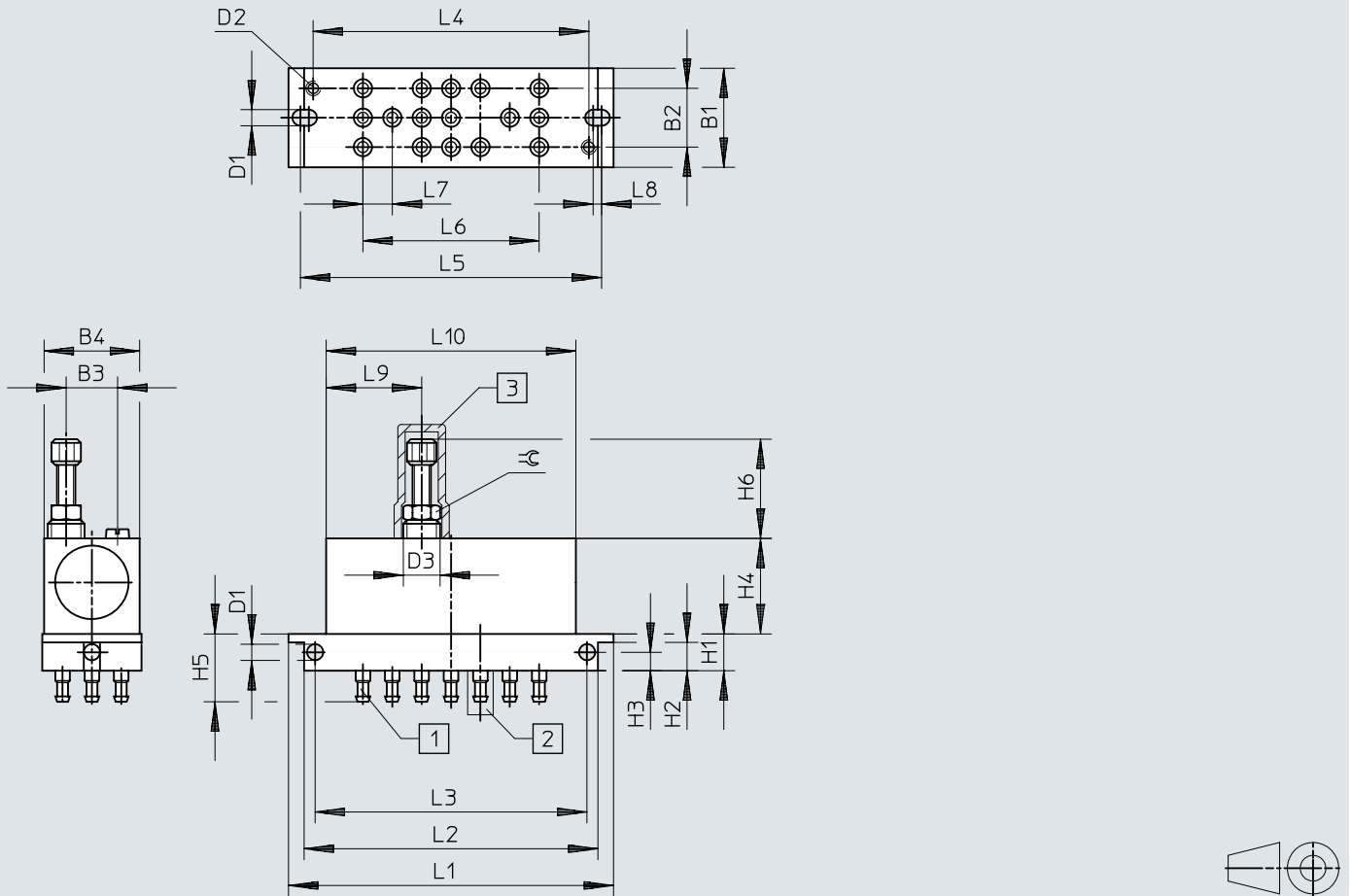
Datasheet

Materials			
Short type code	VLK	VZ	VZO
Material housing	Die-cast zinc		
Material seals	TPE-U(PU)	-	
LABS (PWIS) conformity	VDMA24364-B1/B2-L		

Dimensions

Dimensions – Time delay valves VZ/VZO

Download CAD data www.festo.com



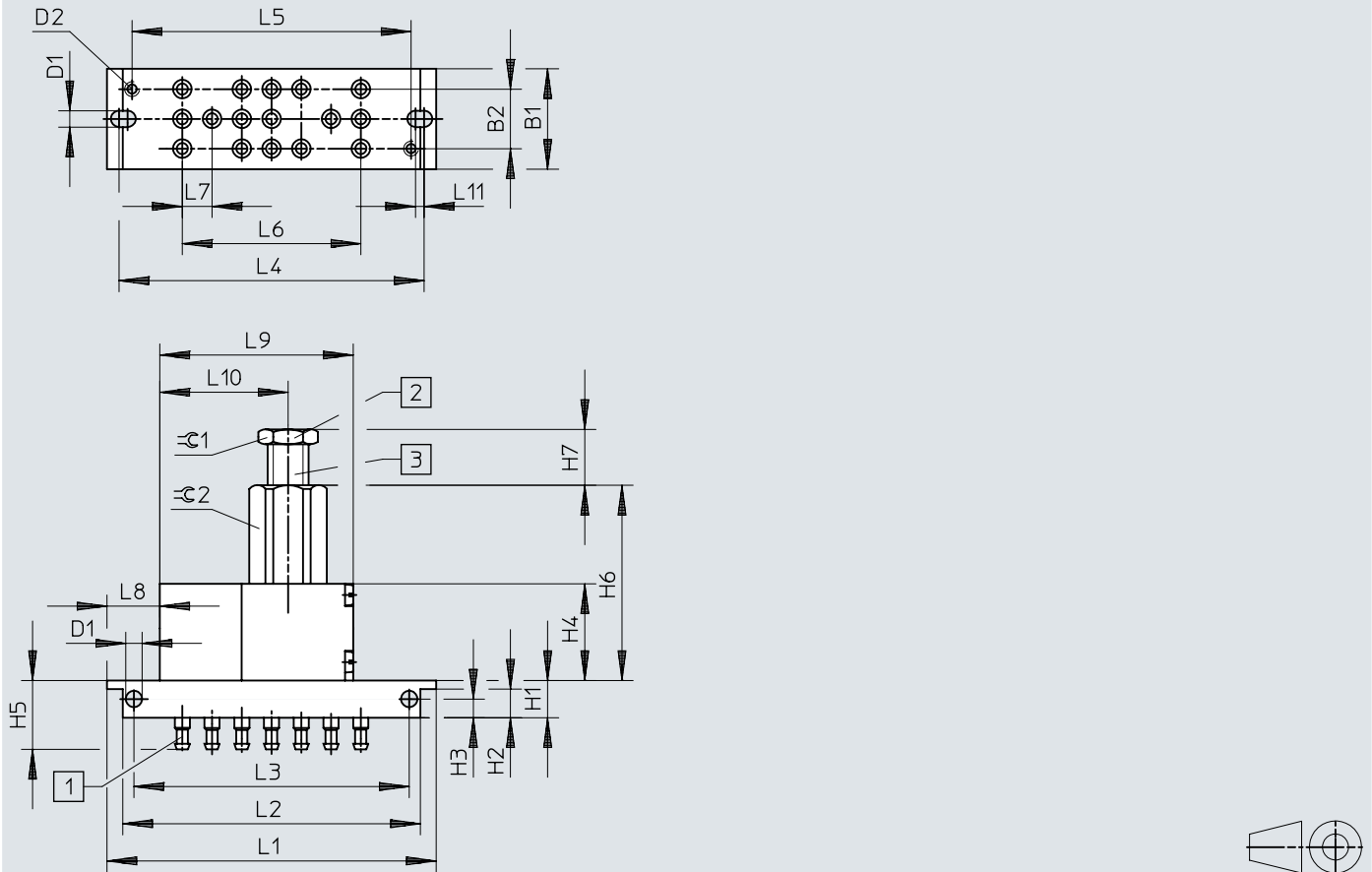
- [1] Barbed connector PK-3 for plastic tubing
- [2] Port 6 with sealing cap, for additional volume
- [3] Protective cap

	B1	B2	B3	B4	D1 ∅	D2	D3	H1	H2	H3	H4	H5
VZ	27	16	14	26	4,4	M4	M10x1	10	7,7	5	26	18,5
VZO												
	H6 min.	L1	L2	L3	L4	L5	L6	L7	L8	L9	L10	≅
VZ	27	88,5	80,8	74	75	81	48	8	2,3	26	68	8
VZO												

Dimensions

Dimensions – Pressure sequence valves VD

Download CAD data www.festo.com

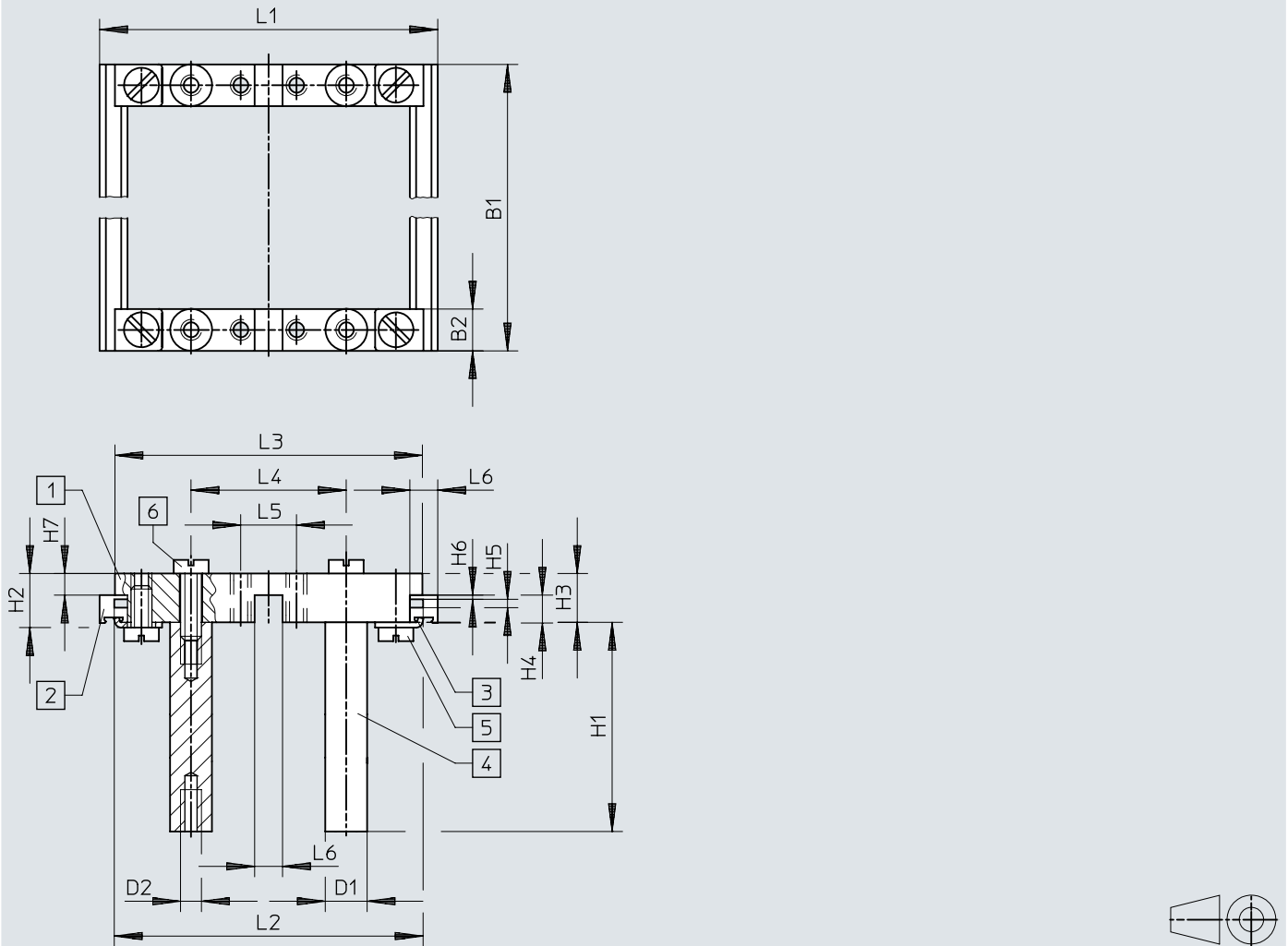


- [1] Barbed connector PK-3 for plastic tubing
- [2] Locking screw
- [3] Pressure adjusting screw (1 graduation line ~ 1 bar)

	B1	B2	D1 ∅	D2	H1	H2	H3	H4	H5	H6	H7	L1
VD-3-PK-3	27	16	4,4	M4	10	7,7	5	26	18,5	52,5	5-15	88,5
	L2	L3	L4	L5	L6	L7	L8	L9	L10	L11	∅ 1	∅ 2
VD-3-PK-3	80,5	74	81	75	48	8	14,2	52	34,5	2,3	14	19

Dimensions

Dimensions – Mounting frame NRRQ-2N


Download CAD data www.festo.com

- [1] Connecting component NRV-2N
- [2] Profile strip NRQ-8-480
- [3] Mounting bracket NRW-12/3
- [4] Bolt NRB-12/60
- [5] Socket head screw DIN 84-M6X18-4.8
- [6] Socket head screw DIN 84-M6X12-4.8

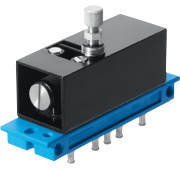
	B1	B2	D1 ∅	D2	H1	H2	H3	H4	H5	H6	H7	L1	L2	L3	L4	L5	L6
NRRQ	480	12	12	M6	60	15,5	14	8	2,4	1,2	6,2	97	88,6	88,2	44,5	16	8

Ordering data


Ordering data – Time delay valve, with switch-on delay

	Short type code	Pneumatic connection	Standard nominal flow rate (standardised to DIN 1343)	Product weight	Part no.	Type
	VZ	PK-3	90 l/min	150 g	5755	VZ-3-PK-3

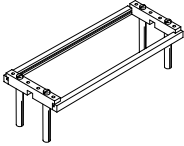
Ordering data – Time delay valve, with switch-off delay

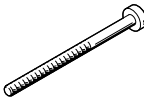
	Short type code	Pneumatic connection	Standard nominal flow rate (standardised to DIN 1343)	Product weight	Part no.	Type
	VZO	PK-3	60 l/min	150 g	5754	VZO-3-PK-3


Ordering data – Short pulse valve

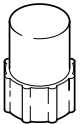
	Short type code	Standard nominal flow rate (standardised to DIN 1343)	Product weight	Part no.	Type
	VLK	90 l/min	170 g	9639	VLK-3-PK-3

Accessories

Mounting frame NRRQ				
	Short type code	LABS (PWIS) conformity	Part no.	Type
	NRRQ	VDMA24364-B1/B2-L	9365	NRRQ-2N

Socket head screws				
	Based on standard	LABS (PWIS) conformity	Part no.	Type
	DIN 84	VDMA24364-C1-L	208938	DIN 84-M6X12-4.8
			200568	DIN 84-M6X18-4.8

Mounting bracket NRW				
	Short type code	LABS (PWIS) conformity	Part no.	Type
	NRW	VDMA24364-B1/B2-L	11571	NRW-9/1,5-B

Protective cap to prevent adjustments GRK-M5				
	Short type code	LABS (PWIS) conformity	Part no.	Type
	GRK	VDMA24364-B1/B2-L	6436	GRK-M5