

Push-in fitting, push-in cartridge, inches QSP

FESTO



Characteristics

At a glance

- Cartridges, nickel-plated brass
- Blanking plug and adapter, polymer
- Operating medium: compressed air, vacuum

Type code

| | | |
|--------------|-----------|--|
| 001 | Series | |
| QSP10 | Cartridge | |
| QSP14 | Cartridge | |

| | | |
|-----------|------------------------|--|
| 002 | Pneumatic connection 1 | |
| 10 | Cartridge 10 mm | |
| 14 | Cartridge 14 mm | |

| | | |
|-------------|-------------------------------|--|
| 003 | Pneumatic connection 2 [inch] | |
| 1/4 | Push-in connector 1/4" | |
| 5/16 | Push-in connector 5/16" | |
| 5/32 | Push-in connector 5/32" | |

| | | |
|----------|-----------------|--|
| 004 | System of units | |
| U | Imperial | |

Datasheet

General technical data – Metric and G male thread

| | | |
|------------------------------|--------------------------------------|---|
| Pneumatic connection, port 1 | Cartridge 10 mm | Cartridge 14 mm |
| Pneumatic connection, port 2 | For tubing outside diameter of 5/32" | For tubing outside diameter of 1/4" For tubing outside diameter of 5/16" |
| Design | Push-pull principle | |
| Mounting position | optional | |

Operating and environmental conditions

| | | |
|--|--|--|
| Operating pressure complete | -0.95 ... 10 bar | |
| temperature range | | |
| Operating medium | Compressed air to ISO 8573-1:2010 [7:::] | |
| Note on operating and pilot medium | Lubricated operation possible | |
| Ambient temperature | -5 ... 60°C | |
| Corrosion resistance class CRC ¹⁾ | 1 - Low corrosion stress | |
| Maritime classification ²⁾ | See certificate | |

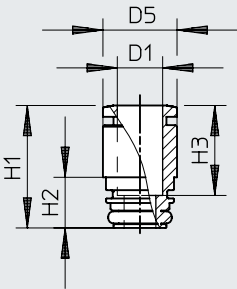
1) More information www.festo.com/x/topic/crc2) More information www.festo.com/catalogue/qs → Support/Downloads**Materials**

| | |
|------------------------|--|
| Material housing | Brass, Brass, nickel-plated, Nickel-plated |
| Colour of release ring | grey |
| Note on materials | RoHS-compliant |
| LABS (PWIS) conformity | VDMA24364-B1/B2-L |

Dimensions


Dimensions

Download CAD data www.festo.com



| | D1 | D5 ø | H1 | H2 | H3 |
|--------------|-------|---------|------|-----|------|
| QSP10-5/32-U | 5/32" | 9,8 | 16,2 | 6,7 | 11,7 |
| QSP14-1/4-U | 1/4" | 13,7 | 22,3 | 7,8 | – |
| QSP14-5/16-U | 5/16" | 13,7 | 22,3 | 7,8 | – |

Ordering data

| Ordering data – Cartridge | | | | | |
|--|---------------------------------|---|--------------|----------|--------------|
| | Pneumatic connection, port 1 | Pneumatic connection, port 2 | Size of pack | Part no. | Type |
|  | Cartridge 10 mm | For tubing outside di- ameter of 5/32" | 1 | 172974 | QSP10-5/32-U |
| | Cartridge 14 mm | For tubing outside di- ameter of 1/4" | | 172985 | QSP14-1/4-U |
| | | For tubing outside di- ameter of 5/16" | | 172986 | QSP14-5/16-U |