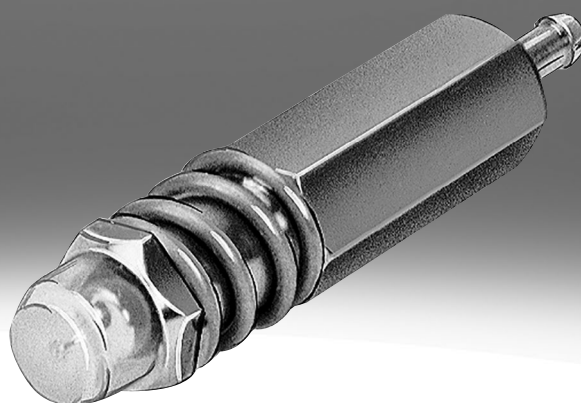


Pressure indicator OH

**FESTO**



### Characteristics

#### At a glance

Pressure indicator OH-8:

Function: The pressure effect on a piston in the drive section moves a thin-walled cylinder made of coloured, translucent material from its normal position into a narrow annular gap into the front space provided with a reflector (total stroke: 4 mm). As a result, the entire space inside the sight cap appears coloured both from the front and from the side.

Mounting: in through hole Ø 8.2 mm (max. front panel thickness: 4.5 mm)

Pressure indicator OH-10:

Function: The visual display shows the air pressure. A spring-loaded piston is moved so that it is clearly visible at the front.

Mounting: panel mounting in Ø 10.5 mm

Pressure indicator OH-22:

Function: The visual indicator responds when there is a pressure of more than 1.5 bar in a line. It is suitable for checking and displaying the operating status. When activated, a coloured sleeve protrudes in the sight cap, which is clearly visible from all sides thanks to a built-in mirror surface.

Mounting: front panel mounting in Ø 22.5 mm

Pressure indicator plate OH-2N-PK-3:

Function: The display plate has 16 pressure indicators. If there is a pressure of more than 1 bar in the respective port, the corresponding indicator pointer 3 mm becomes visible.

Mounting: mounting frame for in-line mounting and control cabinet installation

## Type code

001	Series
OH	Pressure indication

002	Indicator colour
BK	Black
BU	Blue
GN	Green
RD	Red
YW	Yellow

## Datasheet

## Technical data – Pressure indicator OH-8



Pneumatic connection	Barbed fitting PK-3
Operating pressure	-0.1 ... 0.8 MPa
Operating pressure	-1 ... 8 bar
Operating pressure	-14.5 ... 116 psi
Explosion protection	Zone 1 (ATEX) Zone 2 (ATEX) Zone 21 (ATEX) Zone 22 (ATEX)
Operating medium	Compressed air to ISO 8573-1:2010 [7:::]
Note on operating and pilot medium	Lubricated operation possible (in which case lubricated operation will always be required)
Ambient temperature	-10 ... 60°C
Note on materials	RoHS-compliant
LABS (PWIS) conformity	VDMA24364-B1/B2-L

## Technical data – Pressure indicator OH-10



Pneumatic connection	Barbed fitting PK-3
Operating pressure	0.14 ... 0.8 MPa
Operating pressure	1.4 ... 8 bar
Operating pressure	20.3 ... 116 psi
Operating medium	Compressed air to ISO 8573-1:2010 [7:::]
Note on operating and pilot medium	Lubricated operation possible (in which case lubricated operation will always be required)
Ambient temperature	-10 ... 80°C
Note on materials	RoHS-compliant
LABS (PWIS) conformity	VDMA24364-B1/B2-L

## Technical data – Pressure indicator OH-22



Pneumatic connection	G1/8
Operating pressure	1.4 ... 8 bar
Explosion protection	Zone 1 (ATEX) Zone 2 (ATEX) Zone 21 (ATEX) Zone 22 (ATEX)
Operating medium	Compressed air to ISO 8573-1:2010 [7:::]
Note on operating and pilot medium	Lubricated operation possible (in which case lubricated operation will always be required)
Ambient temperature	-10 ... 45°C
Media temperature	-10 ... 45°C
Note on materials	RoHS-compliant
LABS (PWIS) conformity	VDMA24364-B1/B2-L

## Datasheet

## Technical data – Pressure indicator plate OH-2N-PK-3

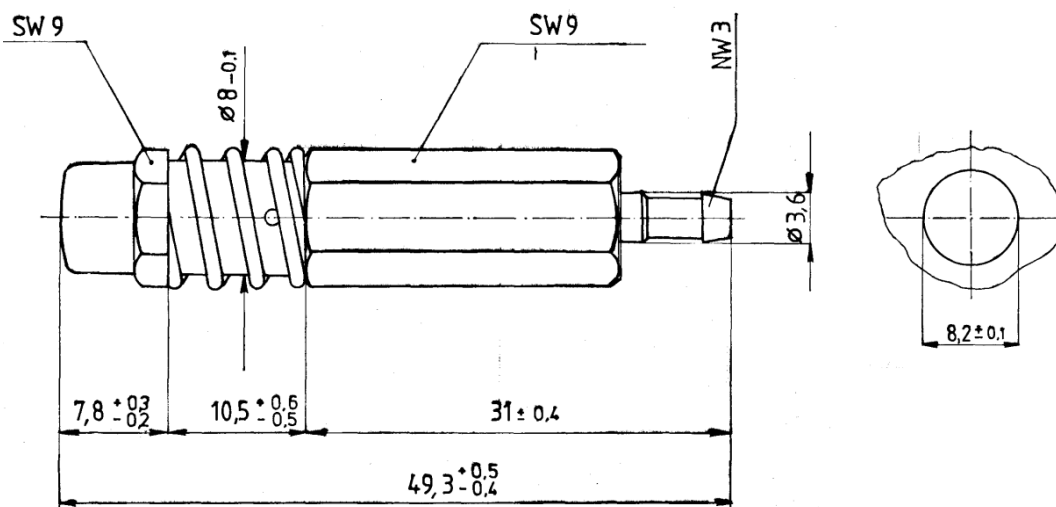


Pneumatic connection	Barbed fitting PK-3
LABS (PWIS) conformity	VDMA24364-B1/B2-L

## Dimensions

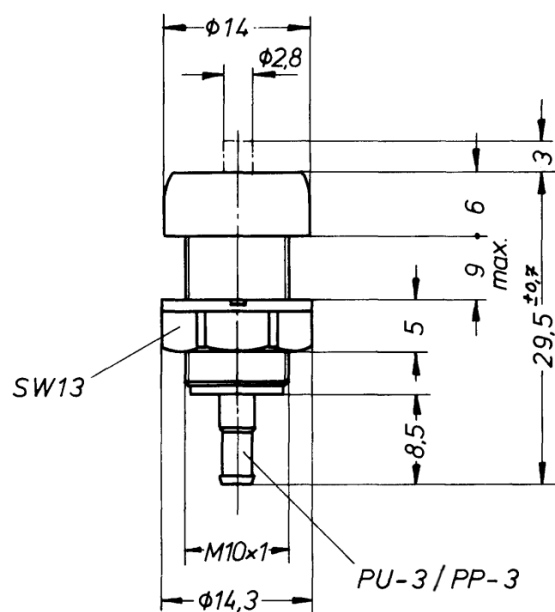
Dimensions – Pressure indicator OH-8

Download CAD data [www.festo.com](http://www.festo.com)



## Dimensions

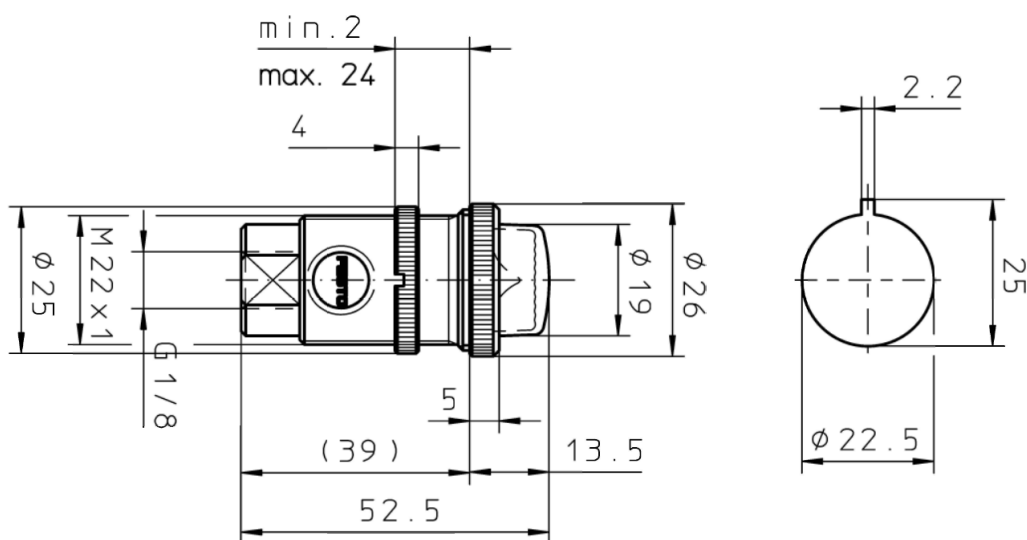
Dimensions – Pressure indicator OH-10

Download CAD data [www.festo.com](http://www.festo.com)

## Dimensions

### Dimensions – Pressure indicator OH-22

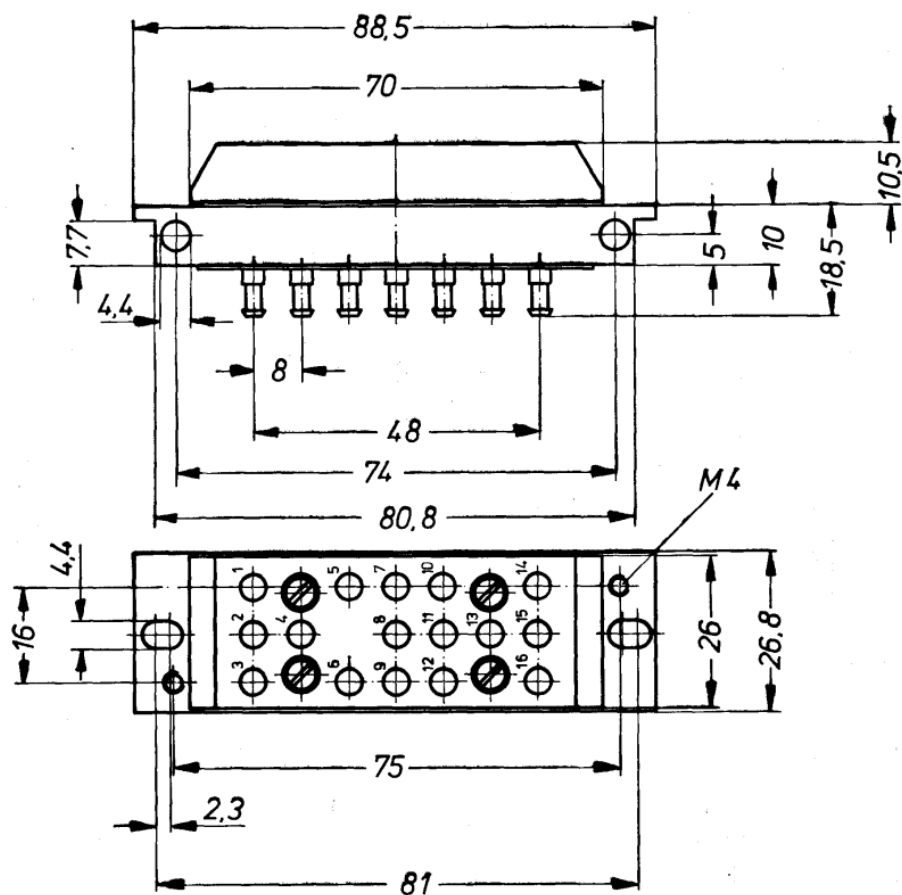
Download CAD data [www.festo.com](http://www.festo.com)







## Dimensions


### Dimensions – Pressure indicator plate OH-2N-PK-3

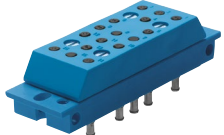
Download CAD data [www.festo.com](http://www.festo.com)

## Ordering data

Pressure indicator OH-8					
	Pneumatic connection	Indicator colour	Product weight	Part no.	Type
	Barbed fitting PK-3	Blue	10 g	<b>10090</b>	<b>OH-8-BL</b>
		Green		<b>10089</b>	<b>OH-8-GN</b>
		Red		<b>10088</b>	<b>OH-8-RT</b>
		Yellow		<b>10091</b>	<b>OH-8-GE</b>

Pressure indicator OH-10					
	Pneumatic connection	Indicator colour	Product weight	Part no.	Type
	Barbed fitting PK-3	Red	4 g	<b>9791</b>	<b>OH-10</b>

Pressure indicator OH-22					
	Pneumatic connection	Indicator colour	Product weight	Part no.	Type
	G1/8	Blue	25 g	<b>4600</b>	<b>OH-22-BL</b>
		Green		<b>4237</b>	<b>OH-22-GN</b>
		Red		<b>4131</b>	<b>OH-22-RT</b>
		Yellow		<b>4601</b>	<b>OH-22-GE</b>

Pressure indicator plate OH-2N-PK-3					
	Pneumatic connection	Indicator colour	Product weight	Part no.	Type
	Barbed fitting PK-3	Black	65 g	<b>7878</b>	<b>OH-2N-PK-3</b>