

Branching module MS4-FRM

FESTO



Characteristics

At a glance

- Grid dimension: 40 mm
- Outlet at top and bottom
- Support for additional modules
- Optionally with integrated non-return function and pressure switch
- Can be used as an intermediate distributor for varying air qualities
- Optional pressure sensor

Product segmentation



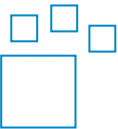
Festo Core Range

Solves the majority of your automation tasks

With the Festo Core Range, we have selected the most important products and functions from our broad product catalogue, and added the quickest delivery. The Core Range offers you the best value with the expected high Festo quality.

- Quickest delivery, worldwide – wherever, whenever
- Expected high Festo quality
- Easy and fast to select

Ordering data - modular system



Configurable product

This product and all its product options can be ordered online via the configurator.

Function

Air distributor with 4 connections

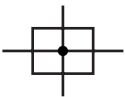
Pneumatic connection

Depending on the size, different connection types can be selected:

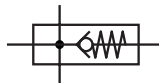
- Individual fittings that are fastened via a female thread
- Connecting plates with female thread

Additional function

None



With integrated non-return function



prevents backflow, e.g. of lubricated compressed air

Pressure gauge alternatives

Two pressure gauge connections for variable installation

Alternative pressure gauge scale

The scaling of the built-in pressure gauge can be selected. The unit options available are [MPa], [bar] / [psi].

Pressure switch

Optionally available with different pressure switches.

Characteristics

Type of mounting

[WP] Mounting bracket basic design



- For wall mounting a single device or a service unit combination

[WPM] Mounting bracket for hooking in service unit components



- For wall mounting an individual device

[WB] Mounting centrally at rear (wall mounting top and bottom), connecting plates not required



- For wall mounting an individual device

[WBM] Mounting centrally at rear (wall mounting top), connecting plates not required



- For wall mounting an individual device

EU certification

Optional device variant EX4 for use in potentially explosive areas of zones 1, 2, 21 and 22

UL certification

Optional device variant UL1, which meets the safety requirements for the Canadian and US markets.

Flow direction

Available with flow in the opposite direction.

Type code

001 Series	
MS4	MS series, size 4
002 Size	
4	Grid dimension 40 mm
003 Function	
FRM	Branching module
004 Pneumatic connection	
1/8	Female thread G1/8
1/4	Female thread G1/4
AGA	Sub-base G1/8
AGB	Sub-base G1/4
AGC	Sub-base G3/8
005 Additional function	
	None
I	With integrated non-return function
006 Pressure gauge alternatives	
	None
A4	Adapter for EN pressure gauge 1/4, without pressure gauge
A8	Adapter for EN pressure gauge 1/8, without pressure gauge
AD7	Pressure sensor with switching display, M8 plug, threshold value comparator, PNP, N/O
AD8	Pressure sensor with switching display, M8 plug, threshold value comparator, PNP, N/C
AD9	Pressure sensor with switching display, M8 plug, window comparator, PNP, N/O
AD10	Pressure sensor with operational status indicator, M8 plug, window comparator, PNP, N/C
AD11	Pressure sensor with LCD display, M12 plug, 4-pin, IO-Link®, PNP, NPN, 0...10 V, 1...5 V, 4...20 mA
AD12	Pressure sensor with LCD display, M8 plug, 4-pin, IO-Link®, PNP, NPN, 0...10 V, 1...5 V, 4...20 mA
AG	MS pressure gauge
RG	Integrated pressure gauge, red/green scale

007 Alternative pressure gauge scale	
	MS pressure gauge
PSI	psi
MPA	MPa
008 Pressure switch	
	None
X	Pressure switch PEV with display, plug socket, EN 175301, type A, cube
Y	Pressure switch PEV without display, plug socket, EN 175301, type A, cube
M12	Pressure switch PEV without display, plug socket, round, M12, 4-pin
009 Type of mounting	
	Without mounting bracket
WP	Mounting bracket basic design
WPM	Mounting bracket for hooking in service unit components
WB	Mounting centrally at rear (wall mounting top and bottom), connecting plates not required
WBM	Mounting centrally at rear (wall mounting top), connecting plates not required
010 EU certification	
	None
EX4	II 2GD
011 UL certification	
	None
UL1	cULus ordinary location for Canada and USA
012 Flow direction	
	Flow direction from left to right
Z	Flow direction from right to left
013 Special material properties	
	None
F1A	Recommended for production plants for manufacturing lithium-ion batteries, F1A

Datasheet

General technical data		
Pneumatic connection, port 1	G1/8	G1/4
Pneumatic connection, port 2	G1/8	G1/4
Pneumatic connection, port 3	G1/4	
Pneumatic connection, port 4	G1/4	
Design	Branching module	Branching module, With non-return function
Mounting position	optional	

Standard nominal flow rate		
Pneumatic connection, port 1	G1/8	G1/4
Standard nominal flow rate in main flow direction 1->2	1,800 l/min	1,750 ... 4,600 l/min
Standard nominal flow rate, outlet upwards	1,600 l/min	500 ... 1,500 l/min
Standard nominal flow rate, outlet downwards	1,700 l/min	500 ... 1,500 l/min

Electrical data	
Operational voltage range AC ¹⁾	0 ... 250 V
Operational voltage range DC ²⁾	0 ... 125 V

1) Only in combination with pressure switch

2) Only in combination with pressure switch

Operating and environmental conditions	
Operating pressure	0 ... 14 bar
Operating medium	Compressed air to ISO 8573-1:2010 [7:4:4], Inert gases
Note on operating and pilot medium	Lubricated operation possible (in which case lubricated operation will always be required)
Ambient temperature	-10 ... 60°C
Media temperature	-10 ... 60°C
Storage temperature	-10 ... 60°C
Corrosion resistance class CRC ¹⁾	2 - Moderate corrosion stress
Suitable for use with food ²⁾	See supplementary material information
Approval ³⁾	c UL us - Recognized (OL)
Instructions on use ⁴⁾	Foreign particles can adhere to the product or form during installation. Depending on the application, it may be necessary to purge the product with clean compressed air, to clean it after installation and operate it with ducted exhaust air.

1) Further information www.festo.com/x/topic/crc

2) Further information www.festo.com/catalogue/ms-firm → Support/Downloads.

3) Further information www.festo.com/catalogue/ms-firm → Support/Downloads.

4) Applies to products for battery production (F1A)

ATEX	
ATEX category gas	II 2G
Explosion ignition protection type for gas	Ex h IIC T6 Gb X
ATEX category dust	II 2D
Explosion ignition protection type for dust	Ex h IIIC T60°C Db X
Explosion ambient temperature	-10°C ≤ Ta ≤ +60°C
CE mark (see declaration of conformity) ¹⁾	To EU Explosion Protection Directive (ATEX)

1) Further information www.festo.com/sp/Certificates.

Materials	
Material housing	Die-cast aluminium
Note on materials	RoHS-compliant
LABS (PWIS) conformity	VDMA24364-B1/B2-L

Datasheet

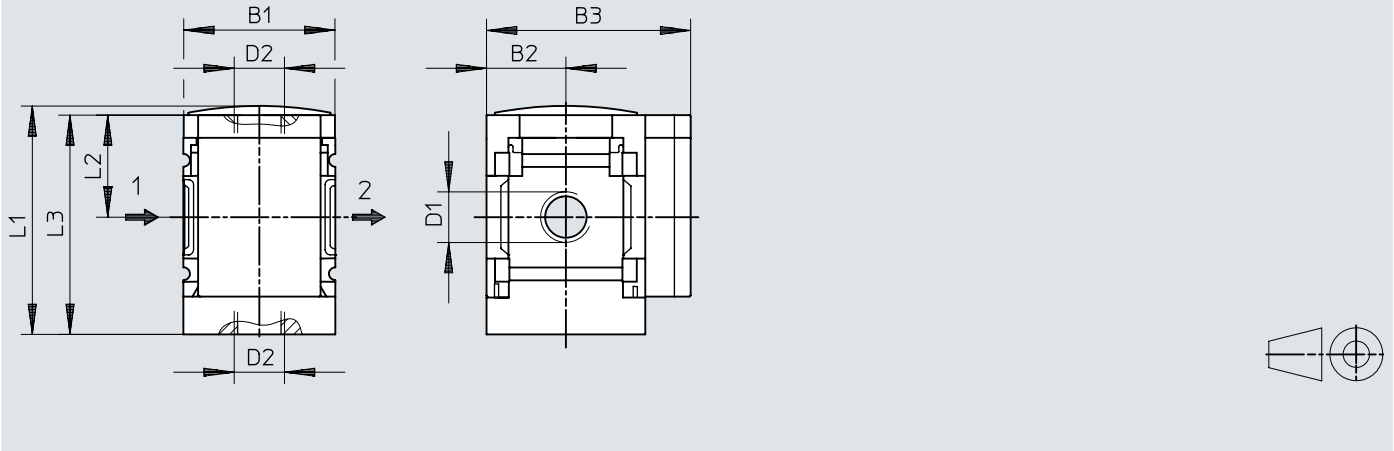
Additional material properties – products for battery production (F1A)

Suitability for the production of Li-ion batteries	Metals with more than 1% by mass of copper, zinc or nickel are excluded from use. The exceptions are nickel in steel, chemically nickel-plated surfaces, circuit boards, cables, electrical plug connectors and coils
--	---

Dimensions

Dimensions – Basic type with female thread, with cover plate

Download CAD data www.festo.com

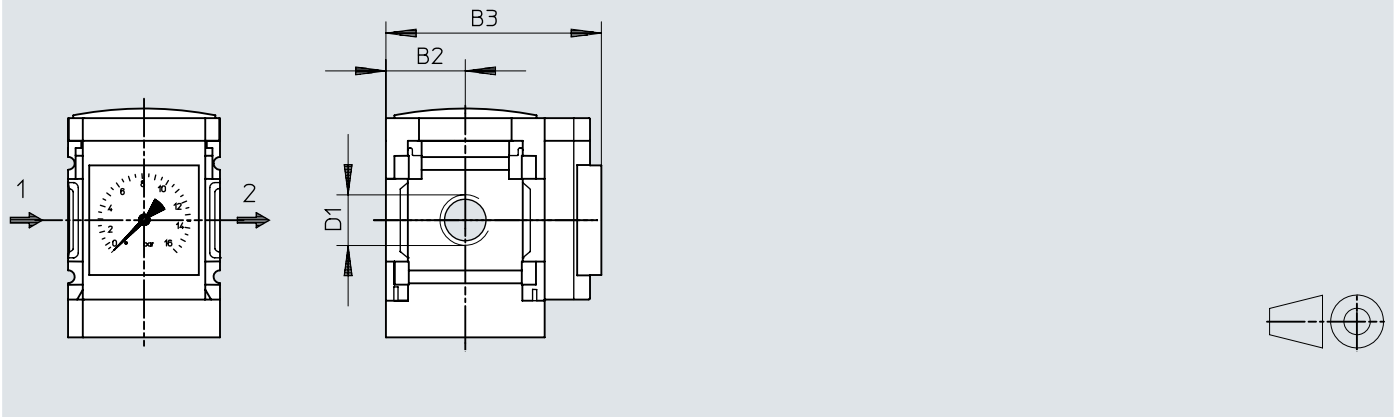


	B1	B2	B3	D1	D2	L1	L2	L3
MS4-FRM-1/8	40	21	54	G1/8	G1/4	60,4	27	58
MS4-FRM-1/4				G1/4				

Dimensions

Dimensions – AG Integrated MS pressure gauge with standard scale, RG Integrated MS pressure gauge with red-green scale

Download CAD data www.festo.com



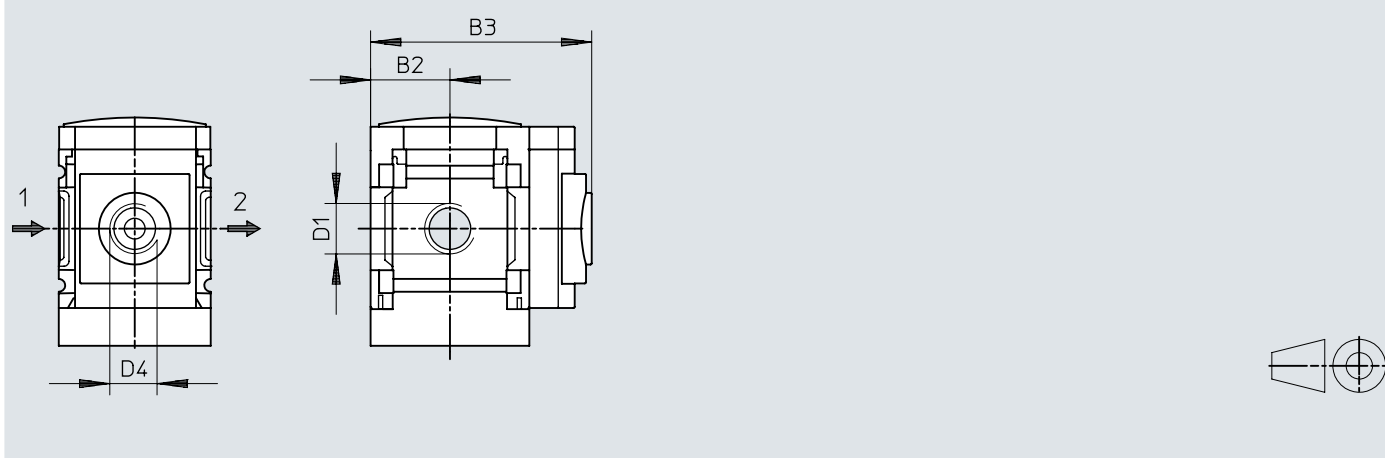
	B2	B3		D1
		1)	I	
MS4-FRM-1/8-...-AG	21	65		G1/8
MS4-FRM-1/4-...-AG				G1/4
MS4-FRM-1/8-...-RG	21	66,5		G1/8
MS4-FRM-1/4-...-RG				G1/4

1) Standard

Dimensions

Dimensions – A8 adapter for EN pressure gauge 1/8, without pressure gauge,
A4 adapter for EN pressure gauge 1/4, without pressure gauge

Download CAD data www.festo.com



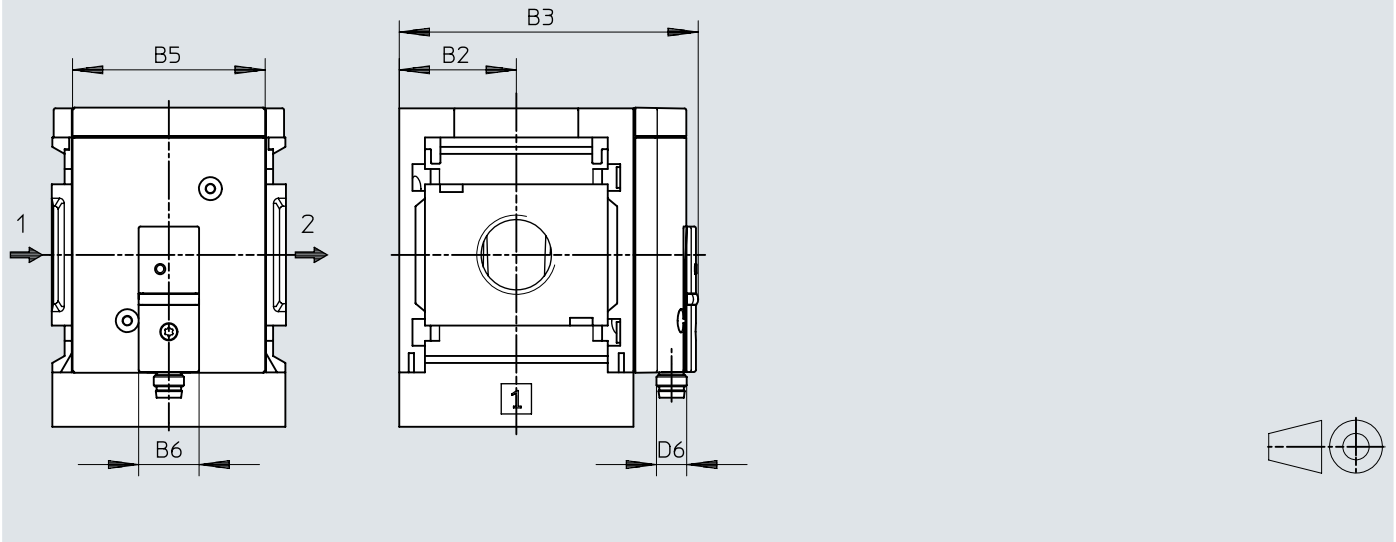
	B2	B3		D1	D4
		1)	l		
MS4-FRM-1/8-...-A8	21	58,5		G1/8	G1/8
MS4-FRM-1/4-...-A8				G1/4	
MS4-FRM-1/8-...-A4	21	58,5		G1/8	G1/4
MS4-FRM-1/4-...-A4				G1/4	

1) Standard

Dimensions

Dimensions – AD7/AD8/AD9/AD10 Pressure sensor with switching indicator

Download CAD data www.festo.com

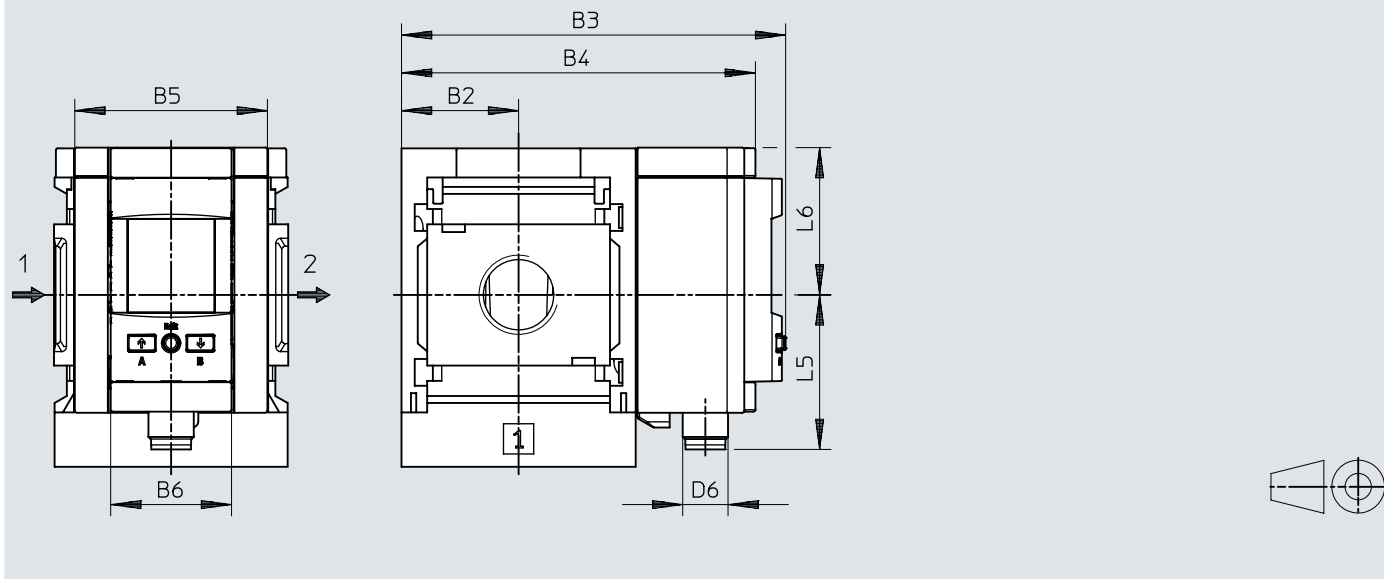


	B2	B3	B5	B6	D6
MS4-FRM-...-AD7/AD8/AD9/AD10	21	59,1	~32	16	M8x1

Dimensions

Dimensions – AD11, AD12 pressure sensor with LCD display

Download CAD data www.festo.com

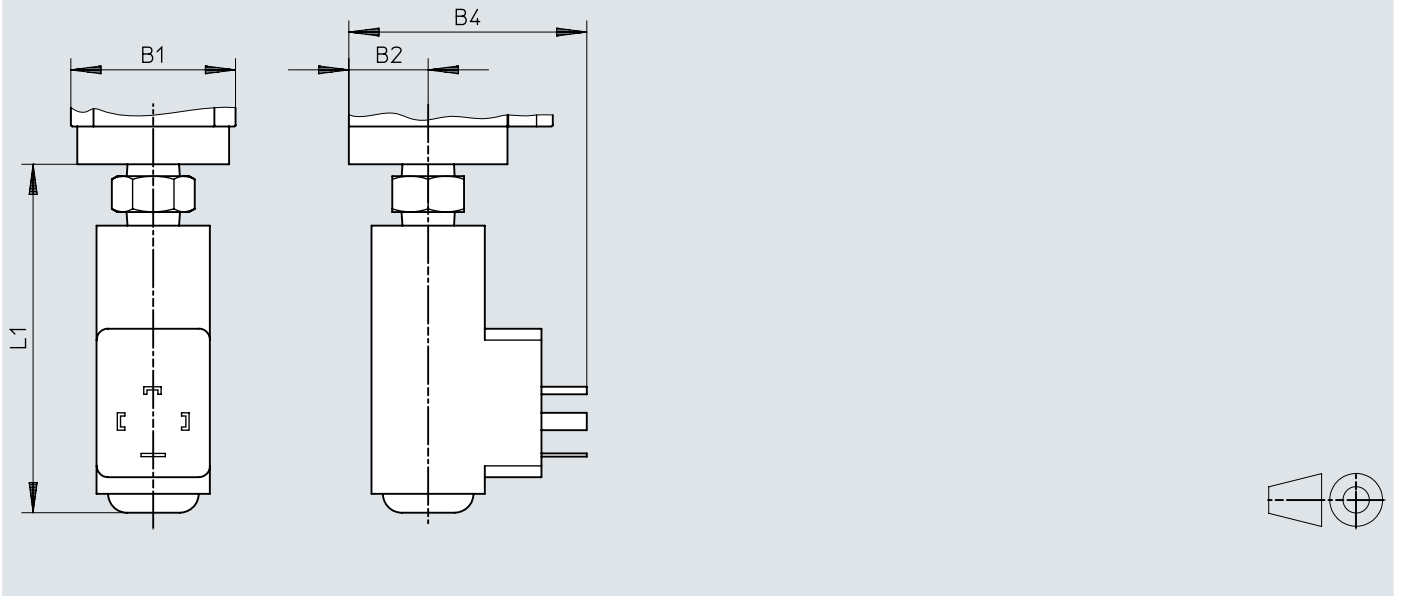


	B2	B3	B4	B5	B6	D6	L5	L6
MS4-...-AD11	21	81,2	73,3	32	32	M12x1	41,2	39
MS4-...-AD12						M8x1		

Dimensions

Dimensions – X/Y pressure switch with adjustable pressure switching point

Download CAD data www.festo.com

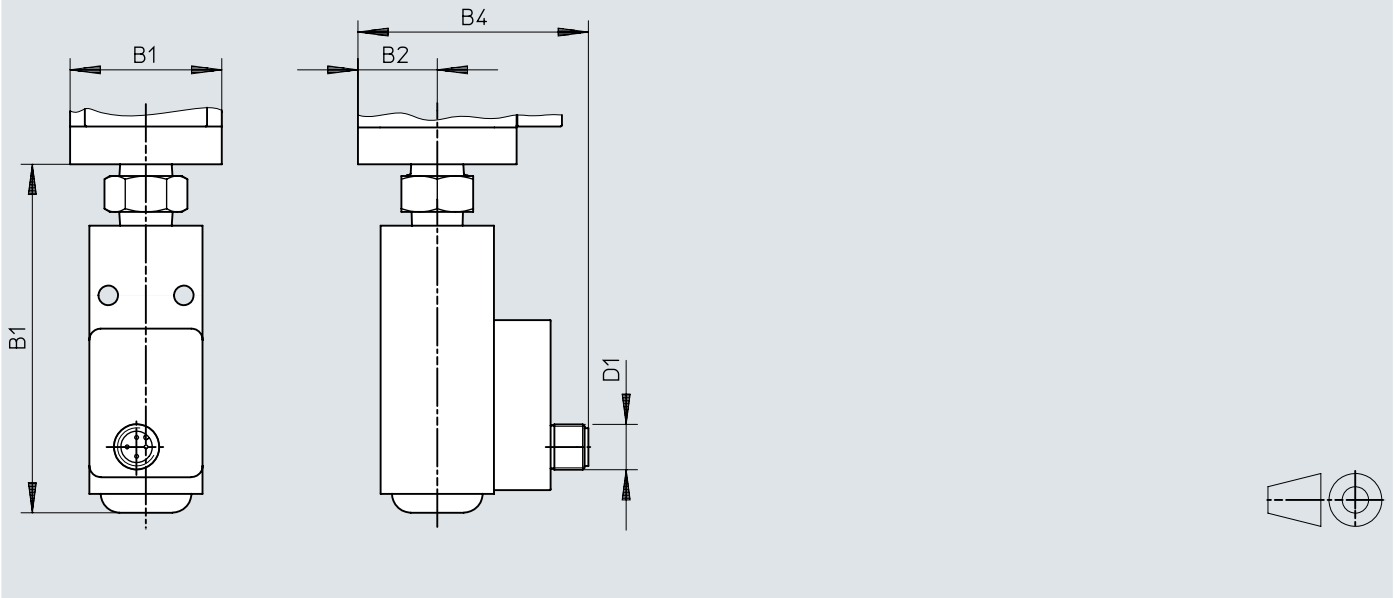


	B1	B2	B4	L1
MS4-FRM-...-X/Y	40	21	63	91,8

Dimensions


Dimensions – M12 pressure switch with adjustable pressure switching point


Download CAD data www.festo.com

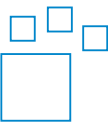


	B1	B2	B4	D1	L1
MS4-FRM-...-M12	40	21	61	M12x1	91,8

Ordering data

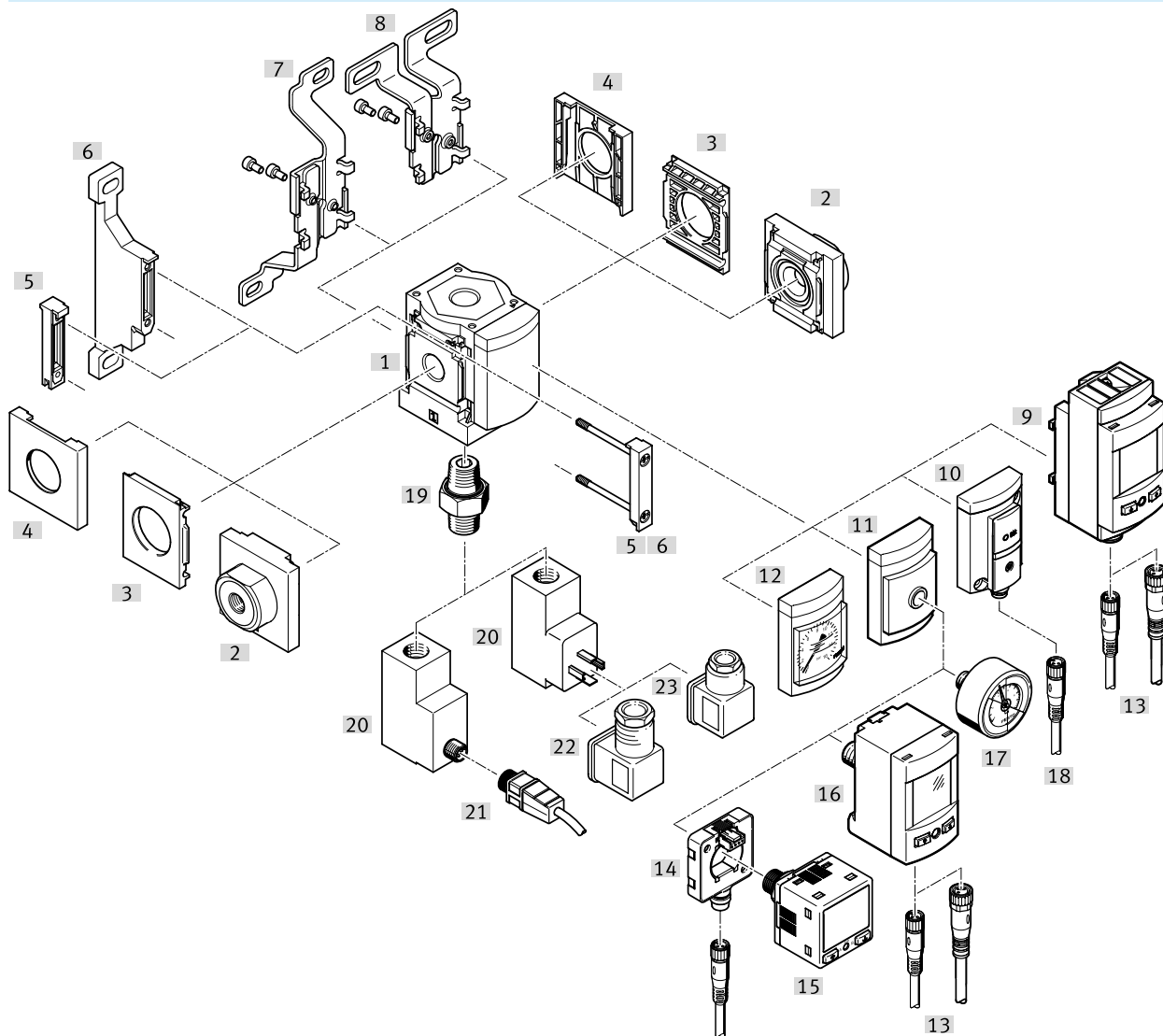
Ordering data						
	Pneumatic connection, port 1	Flow direction	Design	Product weight	Part no.	Type
	G1/8	From left to right	Branching module	165 g	529559	MS4-FRM-1/8
	G1/4	From right to left	Branching module, With non-return function	160 g	536971	MS4-FRM-1/4-I-Z
		From left to right			536966	MS4-FRM-1/4-I
		From right to left	Branching module	165 g	★ 529555	MS4-FRM-1/4
					529558	MS4-FRM-1/4-Z
					405 g	529557
From left to right	529556	MS4-FRM-1/4-Y				

Ordering information – Products for battery production						
	Pneumatic connection, port 1	Pressure gauge alternatives	Product weight	Part no.	Type	
	G1/4	Adapter for EN pressure gauge 1/8, without pressure gauge	165 g	8183570	MS4-FRM-1/4-A8-F1A	

Ordering information – Modular product system						
	Design			Part no.	Type	
	Branching module			527703	MS4-FRM	

Peripherals

Peripherals overview

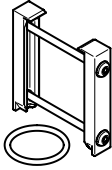
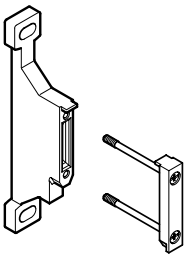
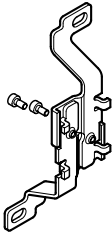
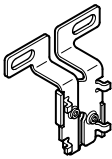
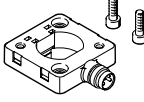
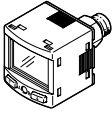


Accessories		→ Link
Type/order code	Description	
[1] Branching module MS4-FRM		ms4-fm
[2] Connecting plate SET MS4-AG...	Order code [AG...]; module connector MS4-MV1 is used for mounting [5] or mounting bracket MS4-WP, WPB, WPE, WPM [6] required.	19
[3] Mounting plate MS4-AEND	Order code [AG...]; module connector MS4-MV1 [5] or mounting bracket MS4-WP, WPB, WPE, WPM [6] is required for mounting.	19
[4] Cover cap MS4-END		19
[5] Module connector MS4-MV1	Included in the scope of delivery	17
[6] Mounting bracket MS4-WP	Order code [WP]	17
[6] Mounting bracket MS4-WPB	Without illustration	17
[6] Mounting bracket MS4-WPE	Without illustration	
[6] Mounting bracket MS4-WPM	Order code [WPM] (without illustration)	17
[7] Mounting bracket MS4-WB	Order code [WB]	17
[8] Mounting bracket MS4-WBM	Order code [WBM]	17
[9] Pressure sensor with LCD display SPAU	Order code [AD11], [AD12]	spau
[10] Pressure sensor with operational status indicator SDE5	Order code [AD7], [AD8], [AD9], [AD10]	sde5
[11] Adapter for EN pressure gauge 1/8, 1/4	Order code [A8], [A4]	ms4-fm
[12] Pressure gauge MS	Order code [AG], [RG]	ms4-fm
[13] Connecting cable NEBA-M8...-LE4, NEBA-M12...-LE4		18
[14] Electrical adapter SASC		17

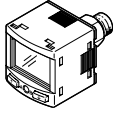
Peripherals

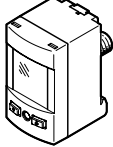
Accessories		→ Link
Type/order code	Description	
[15]	Pressure sensor SPAN	17
[16]	Pressure sensor SPAU-...-T	18
[17]	Pressure gauge MA	18
[18]	Connecting cable NEBA-M8...-LE3	18
[19]	Double nipple ESK	19
[20]	Pressure switch PEV Order code [X], [Y], [M12] Double nipple [19] is included in the scope of delivery.	pev
[21]	Connecting cable NEBA-M12...-LE4	18
[22]	Angled plug socket PEV-1/4-WD-LED-...	19
[23]	Plug socket MSSD-C-4P	19

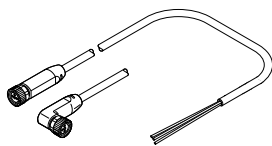
Accessories

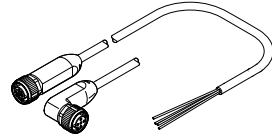
Module connector MS4-MV1				
	Size	Part no.	Type	
	4	★ 8119201	MS4-MV1	
		8176695	MS4-MV1-F1A	
Mounting bracket MS4-WP...				
	Size	Part no.	Type	
	4	★ 526063	MS4-WPB	
		8176694	MS4-WP-F1A	
		526060	MS4-WPM-D	
		541552	MS4-WPB-EX	
		541554	MS4-WP-EX	
		526061	MS4-WPM-2D	
		★ 532184	MS4-WP	
Mounting bracket MS4-WB				
	Size	Part no.	Type	
	4	★ 532185	MS4-WB	
Mounting bracket MS4-WBM				
	Size	Part no.	Type	
	4	★ 526062	MS4-WBM	
Electrical adapter SASC				
	Short type code	Part no.	Type	
	SASC	★ 8000326	SASC-P4-A-M8-A	
Pressure sensor SPAN				
	Pneumatic connection	Analogue output	Part no.	Type
	Male thread G1/8, Female thread M5		★ 8035544	SPAN-P10R-G18M-PN-PN-L1


Accessories

Pressure sensor SPAN				
	Pneumatic connection	Analogue output	Part no.	Type
	Male thread G1/8, Female thread M5	0 - 10 V, 4 - 20 mA, 1 - 5 V	★ 8035533	SPAN-P10R-G18M-PNLK-PNVBA-L1
	Male thread R1/8, Female thread M5		★ 8035547	SPAN-P10R-R18M-PN-PN-L1
		0 - 10 V, 4 - 20 mA, 1 - 5 V	★ 8035536	SPAN-P10R-R18M-PNLK-PNVBA-L1

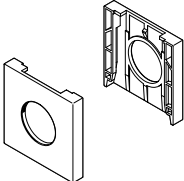
Pressure sensor SPAU...-T				
	Pneumatic connection	Electrical connection 1, connector system	Part no.	Type
	R1/8	M12x1, A-coded to EN 61076-2-101	8001206	SPAU-P10R-T-R18M-L-PNLK-PNVBA-M12D
		M8x1, A-coded, to EN 61076-2-104	8001203	SPAU-P10R-T-R18M-L-PNLK-PNVBA-M8D
	R1/4	M12x1, A-coded to EN 61076-2-101	8001208	SPAU-P10R-T-R14M-L-PNLK-PNVBA-M12D
		M8x1, A-coded, to EN 61076-2-104	8001209	SPAU-P10R-T-R14M-L-PNLK-PNVBA-M8D

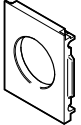
Connecting cable NEBA-M8						
	Electrical connection 1, connector system	Electrical connection 1, number of connections/cores	Electrical connection 1, cable outlet	Cable length	Part no.	Type
	M8x1, A-coded, to EN 61076-2-104	3	Straight	2.5 m	★ 8078223	NEBA-M8G3-U-2.5-N-LE3
				5 m	★ 8078224	NEBA-M8G3-U-5-N-LE3
			Angled	2.5 m	★ 8078230	NEBA-M8W3-U-2.5-N-LE3
				5 m	★ 8078231	NEBA-M8W3-U-5-N-LE3
		4	Straight	2.5 m	★ 8078227	NEBA-M8G4-U-2.5-N-LE4
				5 m	8078228	NEBA-M8G4-U-5-N-LE4
			Angled	2.5 m	★ 8078233	NEBA-M8W4-U-2.5-N-LE4
				5 m	8078234	NEBA-M8W4-U-5-N-LE4

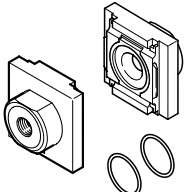
Connecting cable NEBA-M12						
	Electrical connection 1, connector system	Electrical connection 1, number of connections/cores	Electrical connection 1, cable outlet	Cable length	Part no.	Type
	M12x1, A-coded to EN 61076-2-101	5	Straight	2.5 m	★ 8078239	NEBA-M12G5-U-2.5-N-LE4
					★ 8078236	NEBA-M12G5-U-2.5-N-LE3
				5 m	★ 8078240	NEBA-M12G5-U-5-N-LE4
			Angled	2.5 m	★ 8078237	NEBA-M12G5-U-5-N-LE3
					8078248	NEBA-M12W5-U-2.5-N-LE4
					8078245	NEBA-M12W5-U-2.5-N-LE3
		5 m	8078249	NEBA-M12W5-U-5-N-LE4		
			8078246	NEBA-M12W5-U-5-N-LE3		

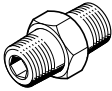
Pressure gauge MA			
	Pneumatic connection	Part no.	Type
	G1/4	183901	MA-40-16-G1/4-EN
	R1/8	525726	MA-40-16-R1/8-E-RG
	R1/4	187080	MA-40-16-R1/4-EN
		525729	MA-50-16-R1/4-E-RG

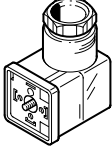
Accessories

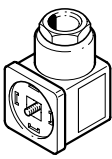
Cover cap MS4-END					
	Size	Part no.	Type		
	4	538779	MS4-END		

Mounting plate MS4-AEND					
	Size	Part no.	Type		
	4	542966	MS4-AEND		

Connecting plate-SET MS4-AG...					
	Size	Pneumatic connection, port 1	Pneumatic connection, port 2	Part no.	Type
	4	G1/8	G1/8	526068	MS4-AGA
				541549	MS4-AGA-EX
		G1/4	G1/4	★ 526069	MS4-AGB
				541550	MS4-AGB-EX
		G3/8	G3/8	526070	MS4-AGC
				541551	MS4-AGC-EX

Double nipple ESK					
	Pneumatic connection, port 1	Pneumatic connection, port 2	Part no.	Type	
	R1/4	R1/4	151521	ESK-1/4-1/4	
		R1/2	534153	ESK-1/4-1/2	

Angled plug socket PEV						
	Operational voltage range AC	Operational voltage range DC	Electrical connection	Switching status indication	Part no.	Type
		15 ... 30 V		Yellow LED, Green LED	164274	PEV-1/4-WD-LED-24
	150 ... 230 V	140 ... 180 V			164275	PEV-1/4-WD-LED-230

Plug socket MSSD					
	Electrical connection	Type of mounting	Part no.	Type	
	3-pin, Angled socket, Type A, To DIN EN 175301-803, Square design MSC, Square design MSN1	On solenoid valve via M3 central screw	171157	MSSD-C-4P	