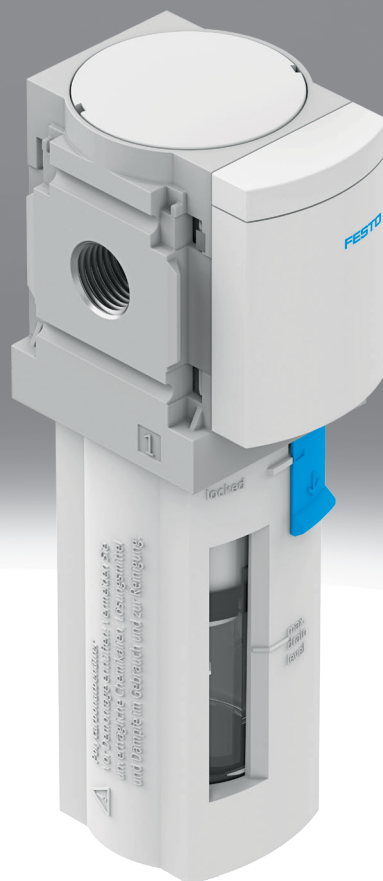


## Activated carbon filter MS4N-LFX

**FESTO**



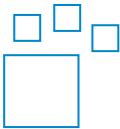
Characteristics

At a glance

- Removes liquid and gaseous oil particles from compressed air using activated carbon
- Elimination of odours and vapours
- Available with filter cartridge for low flow rates, suitable for sealing air and purge air applications
- Prefiltration with micro filter MS-LFM-A (grade of filtration 0.01 µm) is recommended
- Air purity class at the output [1.4.1] acc. to ISO 8573-1

Ordering data - modular system

Link [ms4n-lfx](#)



Configurable product  
This product and all its product options can be ordered online via the configurator.

Size

- Grid dimension: 40 mm  
Standard nominal flow rate:
- 8.8 scfm

Pneumatic connection

- Depending on the size, different connection types can be selected:
- Individual fittings that are fastened via a female thread
  - Connecting plates with female thread

Bowl type

Bowl guard can be selected either as a plastic bowl guard or integrated as a metal bowl guard.

Type of mounting

[WP]      Mounting bracket basic design



- For connecting the modules for wall mounting
- In combination with connecting plate MS4-AG... for mounting an individual device on a wall
- In conjunction with mounting plate MS4-AEND for wall mounting of a single device
- Same wall distance for mixing combination with MS4 and MS6 series

[WB]      Mounting centrally at rear (wall mounting top and bottom), connecting plates not required



- For wall mounting an individual device
- For size 4 or 6

## Characteristics

[WBM]

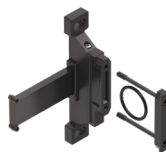
Mounting centrally at rear (wall mounting top), connecting plates not required



- For wall mounting an individual device
- For size 4

[WPM]

Mounting bracket for hooking in service unit components



- Mounting attachment and connector for service unit combination
- Mount and dismount the service unit combination quickly
- Spacer for maintaining the mounting gap
- For size 4, 6, or 9

### Flow direction

Available with flow in the opposite direction.

## Type code

001	Series	
MS	MS series	

002	Size	
4	Grid dimension 40 mm	

003	Thread type	
N	NPT thread	

004	Function	
LFX	Activated carbon filter	

005	Pneumatic connection	
AQK	Sub-base NPT1/8	
AQN	Sub-base NPT1/4	
AQP	Sub-base NPT3/8	
N18	1/8 NPT	
N14	1/4 NPT	

006	Bowl type	
R	Plastic tray with plastic basket	
U	Aluminium	

007	Type of mounting	
	Without mounting bracket	
WP	Mounting bracket basic design	
WPM	Mounting bracket for hooking in service unit components	
WB	Mounting centrally at rear (wall mounting top and bottom), connecting plates not required	
WBM	Mounting centrally at rear (wall mounting top), connecting plates not required	

008	UL certification	
	None	
UL1	cULus ordinary location for Canada and USA	

009	Flow direction	
	Flow direction from left to right	
Z	Flow direction from right to left	

## Datasheet

### General technical data

Pneumatic connection, port 1	1/8 NPT	1/4 NPT
Pneumatic connection, port 2	1/8 NPT	1/4 NPT
Size	4	
Design	Activated carbon filter	
Type of mounting	Either: In-line installation With accessories	
Mounting position	Vertical $\pm 5^\circ$	
Air purity class at output	Compressed air according to ISO 8573-1:2010 [3:4:1]	
Bowl guard	Plastic bowl guard, Integrated as metal bowl	
Residual oil content	0.003 mg/m <sup>3</sup>	

### Standard nominal flow rate qnN

Pneumatic connection, port 1	1/8 NPT	1/4 NPT
Max. standard flow rate for clean air class	360 l/min	

### Operating and environmental conditions

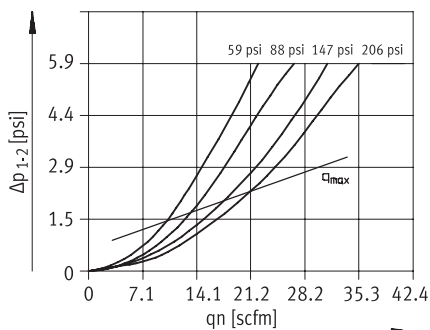
Operating pressure	0 ... 14 bar	
Operating medium	Compressed air according to ISO 8573-1:2010 [3:4:2]	
Ambient temperature	-10 ... 60°C	
Media temperature	5 ... 30°C	
Storage temperature	-10 ... 60°C	
Corrosion resistance class CRC <sup>1)</sup>	2 - Moderate corrosion stress	
UL certification	None, cULus ordinary location for Canada and USA	

1) More information [www.festo.com/x/topic/crc](http://www.festo.com/x/topic/crc)

### Materials

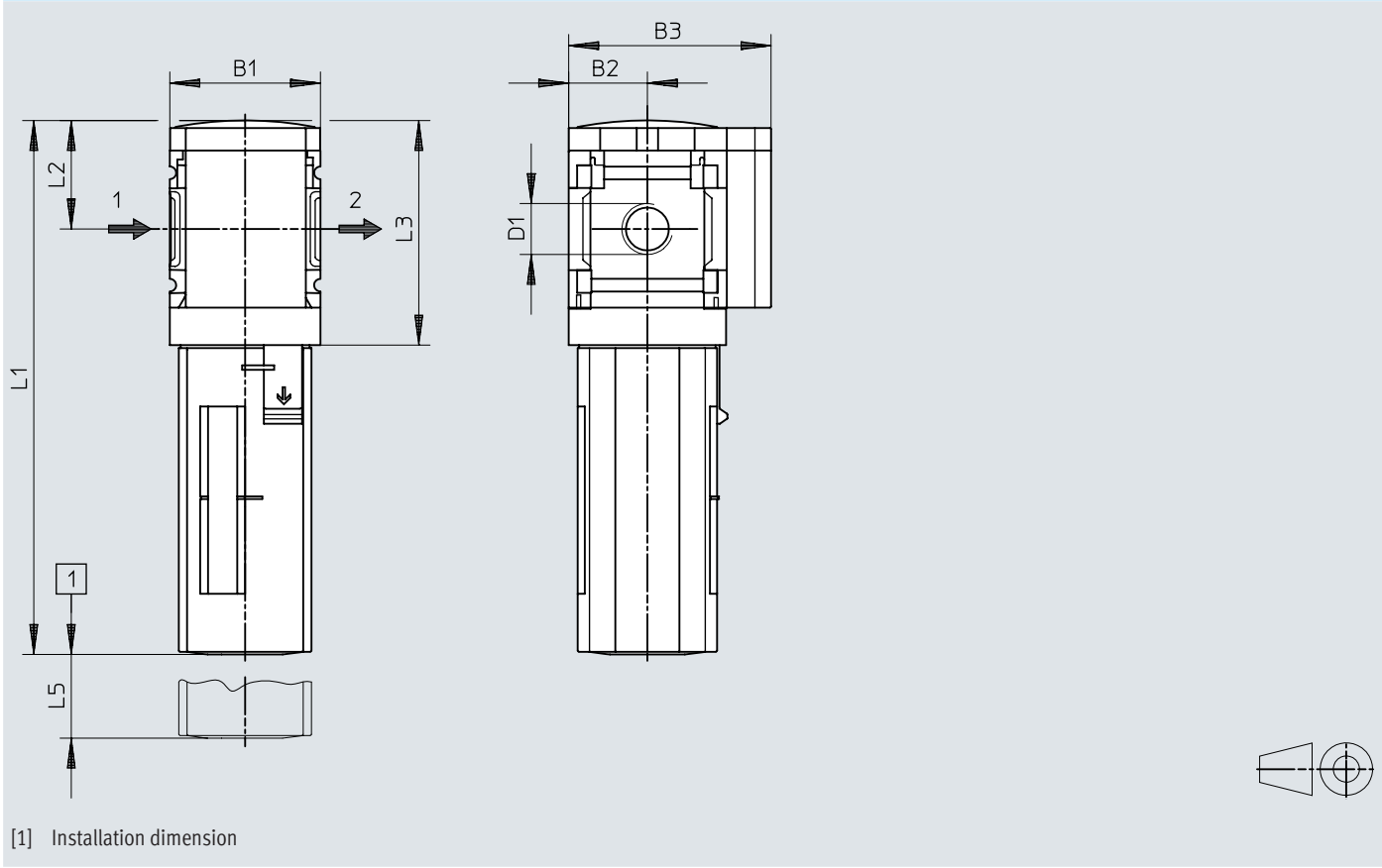
Bowl type	Plastic tray with plastic basket [R]	Aluminium [U]
Material housing	Die-cast aluminium	
Material bowl	PC	Die-cast aluminium, Wrought aluminium alloy
Material screen	—	PA
Material filter	Activated carbon	
Note on materials	RoHS-compliant	
LABS (PWIS) conformity	VDMA24364-B1/B2-L	

### Standard flow rate qn as a function of differential pressure $\Delta p_{1-2}$ (MS4N-LFX-1/8; MS4N-LFX-1/4)



Dimensions


Dimensions – Standard/application range HP Download CAD data [www.festo.com](http://www.festo.com)



	B1	B2	B3	D1	L1		L2	L3	L5
	[inch]	[inch]	[inch]		1) [inch]	2) [inch]	[inch]	[inch]	[inch]
MS4N-LFX-1/8	1,58	0,83	2,13	1/8 NPT	5,62	6,31	1,14	2,38	3,15
MS4N-LFX-1/4				1/4 NPT					

- 1) Bowl guard, polymer
- 2) Bowl guard, metal

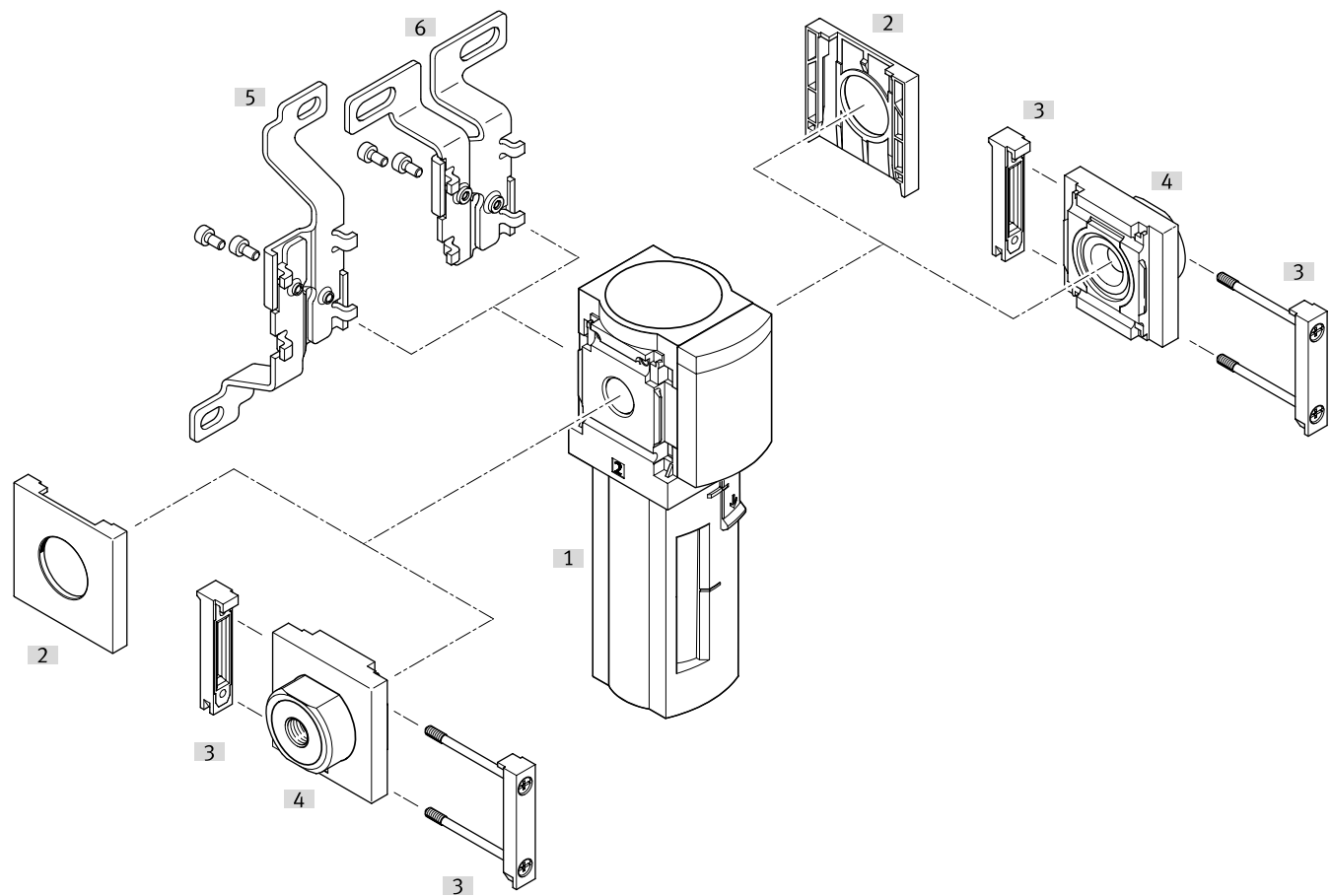
## Ordering data

Ordering data				
	Pneumatic connection, port 1	Product weight	Part no.	Type
	1/8 NPT	190 g	<b>536715</b>	<b>MS4N-LFX-1/8-R</b>
		350 g	<b>536717</b>	<b>MS4N-LFX-1/8-U</b>
	1/4 NPT	190 g	<b>531764</b>	<b>MS4N-LFX-1/4-R</b>
		350 g	<b>535786</b>	<b>MS4N-LFX-1/4-U</b>

Ordering data – Modular product system			
	Short type code	Part no.	Type
	MS4N-LFX	<b>527700</b>	<b>MS4N-LFX</b>

Peripherals

Peripherals overview




Accessories		→ Link
Type/order code	Description	
[1] Activated carbon filter MS4N-LFX		<a href="#">ms4n-lfx</a>
[2] Cover cap MS4-END	For devices without connecting plate	<a href="#">9</a>
[3] Module connector MS4-MV	For device combinations and individual devices with connecting plate	<a href="#">9</a>
[4] Connecting plate-SET MS4-AG	For device combinations	<a href="#">10</a>
[5] Mounting bracket MS4-WB	For individual device	<a href="#">9</a>
[6] Mounting bracket MS4-WBM	For individual device	<a href="#">10</a>
[7] Mounting bracket MS4-WP/WPB/WPE/WPM	Not shown	<a href="#">9</a>




## Accessories


## Activated carbon filter cartridge – MS-...-LFX

	Size	Material filter	Part no.	Type
	Mini	Activated carbon	532912	MS4/D-MINI-LFX

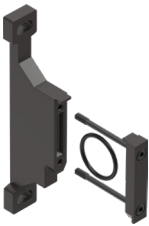
## Module connector MS4-MV1

	Size	Part no.	Type
	4	8119201	MS4-MV1

## Cover cap MS4-END

	Size	Part no.	Type
	4	538779	MS4-END


## Mounting bracket MS4-WP...


	Size	Material bracket	LABS (PWIS) conformity	Product weight	Part no.	Type
	4	Die-cast aluminium	VDMA24364-B1/B2-L		558869	MS4-WPE
				39 g	532184	MS4-WP
				45 g	526060	MS4-WPM-D
				55 g	526063	MS4-WPB
					526061	MS4-WPM-2D

## Mounting bracket MS4-WB

	Size	Part no.	Type
	4	532185	MS4-WB

## Accessories

Mounting bracket MS4-WBM			
	Size	Part no.	Type
	4	526062	MS4-WBM

Connecting plate SET MS4-AQ...				
	Size	Pneumatic connection, port 1	Part no.	Type
	4	1/8 NPT	526065	MS4N-AQK
		1/4 NPT	526066	MS4N-AQN
		3/8 NPT	526067	MS4N-AQP