

## Adding counter CCES

**FESTO**



## Characteristics

### At a glance

The electrical adding counter CCES and a proximity switch can be used to count the switching cycles of a cylinder.

- 8-digit LCD display
- Own power supply
- Intended for front panel mounting.
- Connection via terminal strip
- Reset button

## Type code

001	Series
CCES	Adding counter

002	Design type
P	Front panel integration

003	Display type
C	LCD, backlit

004	Number of positions
8	8-digit

005	Reset method
E	Electric signal/pushbutton

## Datasheet

## General technical data

Design	Electric adding counter with battery
Type of mounting	Front panel mounting
Power supply	Lithium battery
Display	8-digit
Type of reset	Pushbutton or electric signal
Min. pulse length drive	15 ms
Min. pulse length reset	15 ms

## Electrical data

Lower threshold value DC	0.7 V
Upper threshold value DC	5 ... 30 V
Clock pulse input (input)	Programmable
Clock pulse input setting	Negative edge 30 Hz
Max. counting rate	7.5 kHz
Max. attenuated counting rate	30 Hz

## Operating and environmental conditions

Ambient temperature	-10 ... 50°C
CE mark (see declaration of conformity) <sup>1)</sup>	To EU EMC Directive
CE marking (see declaration of conformity) <sup>2)</sup>	To UK instructions for EMC
Corrosion resistance class CRC <sup>3)</sup>	2 - Moderate corrosion stress

1) More information: [www.festo.com/catalogue/cces](http://www.festo.com/catalogue/cces) → Support/Downloads

2) More information: [www.festo.com/catalogue/cces](http://www.festo.com/catalogue/cces) → Support/Downloads

3) More information [www.festo.com/x/topic/crc](http://www.festo.com/x/topic/crc)

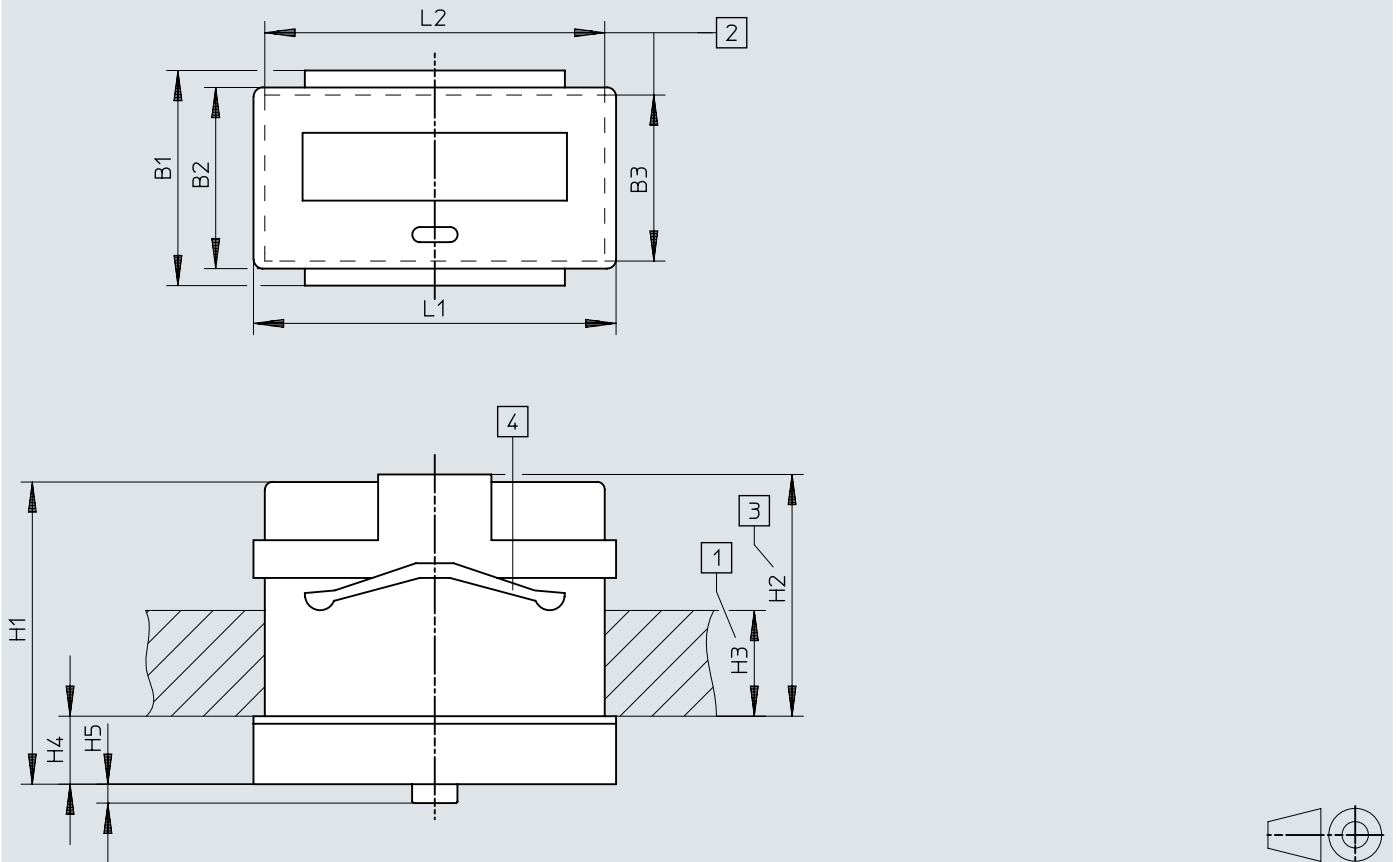
## Materials

Material housing	PC
Note on materials	RoHS-compliant
LABS (PWIS) conformity	VDMA24364-B1/B2-L

## Dimensions

### Dimensions – Adding counter CCES


Download CAD data → [www.festo.com](http://www.festo.com)



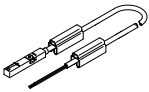
- [1] Front panel
- [2] Cutout on front panel
- [3] Installation depth
- [4] Clamp frame

	B1	B2	B3 +0,3	H1	H2 min.	H3 max.	H4	H5	L1	L2 +0,6
CCES-P-C8-E	28,5	24	22	40	32	14	9	2,5	48	45

## Ordering data

Ordering data				
	Short type code	Product weight	Part no.	Type
	CCES	30 g	549403	CCES-P-C8-E

## Accessories

Proximity switch SMT-8M						
	Switching element function <sup>1)</sup>	Cable length <sup>2)</sup>	Switching output	Product weight	Part no.	Type
	N/O contact	2.5 m	Contacting, bipolar	29.8 g	543862	SME-8M-DS-24V-K-2,5-0E

1) The proximity switch SME can be connected to the adding counter as a 2-wire switch without an additional voltage supply.

2) Shielded cables must be used for cable lengths over 3 m. The max. permissible cable length is 30 m.