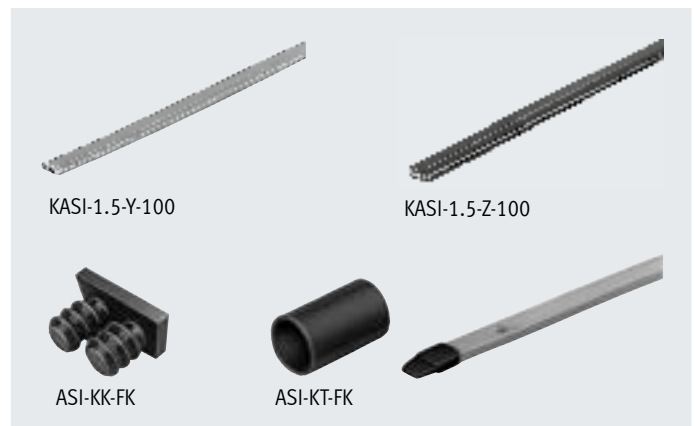
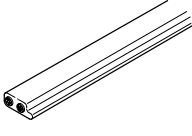
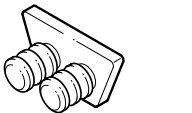



## Data sheet – KASI-1.5

- Ribbon cable, 2-core
- Reverse polarity protected
- Contact using insulation displacement technology – no need to strip the cable and core sheathing
- 2 different colours: yellow (preferred for the AS-Interface network) and black (for auxiliary power supply)
- For preassembly
- Accessories
  - Ribbon cable sleeve  
For insulating and sealing the AS-Interface cable
  - Cable cap  
For insulating and sealing the AS-Interface cable at the end of the string



General technical data		KASI-1.5-Y-100	KASI-1.5-Z-100
Type			
Connection cross section	[mm <sup>2</sup> ]	2x 1.5	
Max. cable length	[m]	100	
Colour		Yellow	Black
Use		For indoor use only	For outdoor use
Ambient temperature	[°C]	-40 ... +85	
Ambient temperature for flexible cable installation	[°C]	-25 ... +85	

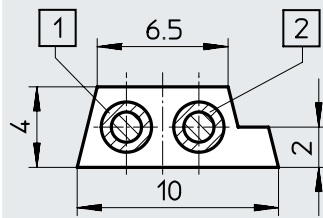
Ordering data								
	Information on materials	Degree of protection	Operating voltage range		Current rating [A]	Product weight [g]	Part no.	Type
			[V AC]	[V DC]				
	Casing: Rubber compound EM3 Cable: Rubber compound 3GL3 Conductor: Tin-plated copper	IP65 with sealed wire ends	60	75	3	71	18940 18941	KASI-1.5-Y-100 KASI-1.5-Z-100
	Polyamide	IP65	–	–	–	–	18787	ASI-KK-FK
			–	–	–	–	165593	ASI-KT-FK

## Data sheet – KASI-1.5

### Dimensions

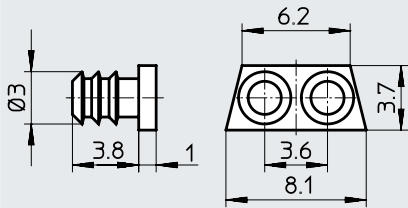
Download CAD data → [www.festo.com](http://www.festo.com)

Flat cable – KASI-1.5-...-100



- [1] Blue (-)
- [2] Brown (+)

Cable cap – ASI-KK-FK



Flat cable sleeve – ASI-KT-FK

