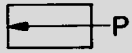


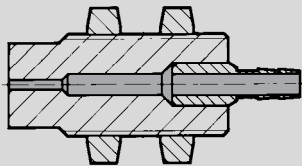
Non-Contact Pneumatic Sensors

Air Barrier Sensors

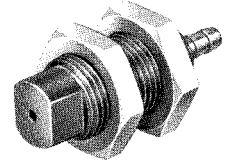
Sender for Air Barrier Type SML-40-S



The sender nozzle may also be used as a back pressure sensor in combination with a separate air supply throttling system, (for example, Y-PK-3-D). See SD-2 setup shown on page 188.

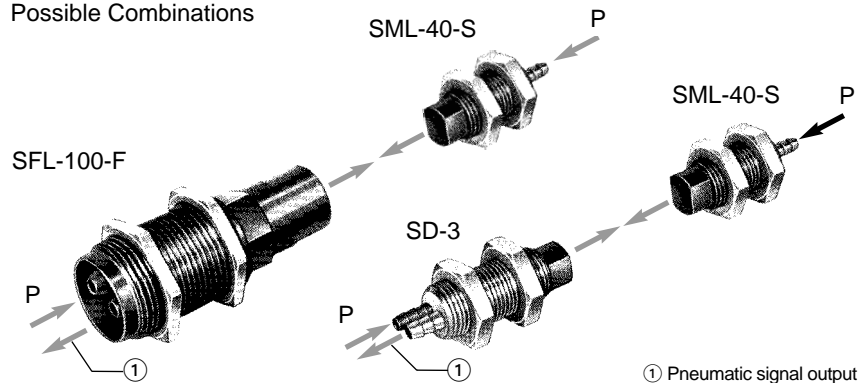


SML-40-S



The sender is used with receiver SFL-100-F (see page 202) or back pressure end stop SD-3 (see page 188) to set up an air barrier sensing arrangement (see illustrations on page 184). The sender nozzle produces a fine, stable flow of air, generating a dynamic pressure in the receiver. If an object interferes with the air flow, the receiver signal pressure decreases. For this combination, optimal sense range between the receiver and sender nozzle is 0.8-1.5 in / 20-40 mm. Air flowing from the two nozzles must be directed so that the critical point lies in front of the receiver orifice. For sensing ranges greater than 2 in / 50 mm, the flow of the receiver must be reduced by upstream throttling; for smaller sensing ranges, that of the sender must be reduced. The corresponding values are shown in the graph on page 201.

Possible Combinations



① Pneumatic signal output

Order Number	Part No./Type	7442 SML-40-S
Medium		Compressed air (filtered, unlubricated)
Mounting		M12 x 1 threaded with mounting nuts
Mounting Hole Diameter		0.5 in / 12.5 mm
Connection		Barbed fitting for 3/16 in / 3 mm tubing
Orifice Size		0.1 in / 2.5 mm
Supply Pressure Range at P*		1.5 to 6 psi / 0.1 to 0.4 bar
Signal Pressure Range at A		See graph, next page
Air Consumption at 1.5 psi / 0.1 bar		0.22 SCFM / 6.3 l/min
Max. Nozzle Range		2 in / 50 mm (no upstream throttling)
Ambient Temperature		-40 to 212°F / -40 to 100°C†
Design		Nozzle, no moving parts
Material		Housing: Al, brass
Weight		0.033 lb / 0.015 kg

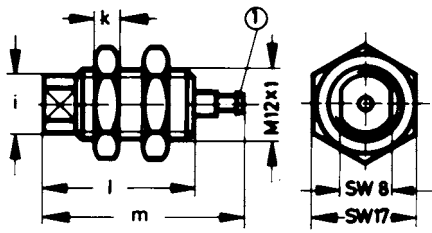
* 14 to 140°F / -10 to 60°C

† Depending on tubing used

Non-Contact Pneumatic Sensors

Dimensions and Mounting Hardware

Type SML-40-S

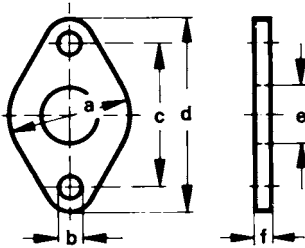


Dimensions

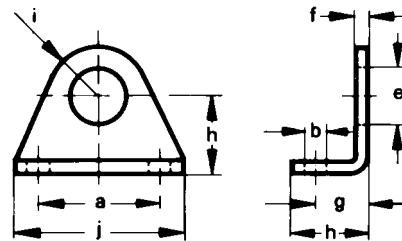
a 0.99 in / 25 mm	h 0.63 in / 16 mm
b 0.18 in / 4.5 mm	i 0.39 in / 10 mm
c 1.18 in / 30 mm	j 1.38 in / 35 mm
d 1.58 in / 40 mm	k 0.16 in / 4 mm
e 0.48 in / 12.1 mm	l 1.02 in / 26 mm
f 0.12 in / 3 mm	m 1.36 in / 34.5 mm
g 0.43 in / 11 mm	

① Barbed fitting for 3/16 in / 3 mm tubing
SW = wrench size, mm

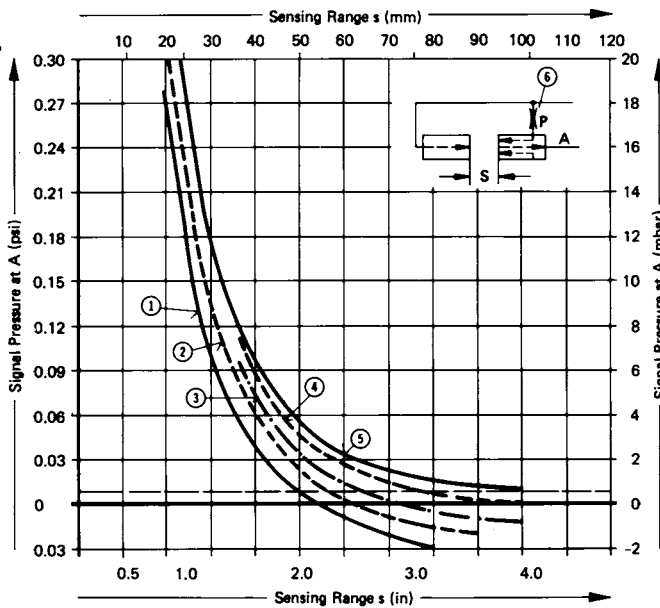
Flange Mount
Order Number 5129 FBN-8/10



Foot Mount
Order Number 5123 HBN-8/10-1



Signal Pressure versus Sensing Range
(at 2 psi / 150 mbar Supply Pressure, SML-40-S and SD-3).



- ① No Upstream Throttling
- ② Upstream Throttling, Diameter 0.019 in / 0.5 mm
- ③ Upstream Throttling, Diameter 0.016 in / 0.4 mm
- ④ Upstream Throttling, Diameter 0.012 in / 0.3 mm
- ⑤ P Blocked
- ⑥ Upstream Throttling

Festo - Your Partner in Automation



1 Festo Inc.
5300 Explorer Drive
Mississauga, ON L4W 5G4
Canada

Festo Customer Interaction Center
Tel: 1 877 463 3786
Fax: 1 877 393 3786
Email: customer.service.ca@festo.com

2 Festo Pneumatic
Av. Ceylán 3,
Col. Tequesquináhuac
54020 Tlalnepantla,
Estado de México

Multinational Contact Center
01 800 337 8669
ventas.mexico@festo.com

3 Festo Corporation
1377 Motor Parkway
Suite 310
Islandia, NY 11749

Festo Customer Interaction Center
1 800 993 3786
1 800 963 3786
customer.service.us@festo.com

4 Regional Service Center
7777 Columbia Road
Mason, OH 45040

Connect with us



www.festo.com/socialmedia



www.festo.com

Subject to change