

Sealing material

FESTO



Datasheet

Technical data – Sealing ring CRO

| | | | | | | | |
|--|---|------|------|------|------|------|----|
| Pneumatic connection | M5 | G1/8 | G1/4 | G3/8 | G1/2 | G3/4 | G1 |
| Mounting position | optional | | | | | | |
| Operating medium | Compressed air to ISO 8573-1:2010 [7:-:-] | | | | | | |
| Note on operating and pilot medium | Lubricated operation possible | | | | | | |
| Suitable for use with food ¹⁾ | See supplementary material information | | | | | | |
| Material seals | PVDF | | | | | | |
| Note on materials | RoHS-compliant | | | | | | |
| LABS (PWIS) conformity | VDMA24364-B1/B2-L | | | | | | |

1) More information www.festo.com/catalogue/... → Downloads.

Technical data – Sealing ring O

| | | | | | | | | |
|------------------------|-------------------|-----------------------------------|------|------|------|------|-------------------|----|
| Pneumatic connection | M3 | M5 | G1/8 | G1/4 | G3/8 | G1/2 | G3/4 | G1 |
| Material seals | PA | PVC | | | | | | |
| Note on materials | RoHS-compliant | | | | | | | |
| LABS (PWIS) conformity | VDMA24364-B1/B2-L | VDMA24364-B2-L, VDMA24364-B1/B2-L | | | | | VDMA24364-B1/B2-L | |

Technical data – Sealing ring NPAS

| | | | | | | | |
|---|---|--|------|--|------|--|--|
| Pneumatic connection | G1/8 | | G1/4 | | G3/8 | | |
| Mounting position | optional | | | | | | |
| Operating pressure complete temperature range | -13.775 ... 174 psi | | | | | | |
| Operating pressure complete temperature range | -0.95 ... 12 bar | | | | | | |
| Operating pressure complete temperature range | -0.095 ... 1.2 MPa | | | | | | |
| Operating medium | Compressed air to ISO 8573-1:2010 [7:-:-], Water (liquid, ice-free), Water vapour | | | | | | |
| Note on operating and pilot medium | Lubricated operation possible | | | | | | |
| Ambient temperature | -20 ... 120°C | | | | | | |
| Suitable for use with food ¹⁾ | See supplementary material information | | | | | | |
| Material seals | PEEK | | | | | | |
| Note on materials | RoHS-compliant | | | | | | |
| LABS (PWIS) conformity | VDMA24364-B2-L | | | | | | |

1) More information www.festo.com/catalogue/... → Downloads.

Technical data – Sealing ring OK

| | | | | | | | | |
|---|--|----|----|------|---------------|------|------|------|
| Pneumatic connection | M3 | M5 | M7 | G1/8 | G1/4 | G3/8 | G1/2 | G3/4 |
| Tightening by hand at room temperature | yes | | | | | | | |
| Based on standard | ISO 16030 | | | | | | | |
| Operating pressure complete temperature range | -13.775 ... 145 psi | | | | | | | |
| Operating pressure complete temperature range | -0.95 ... 10 bar | | | | | | | |
| Operating pressure complete temperature range | -0.095 ... 1 MPa | | | | | | | |
| Operating medium | Compressed air to ISO 8573-1:2010 [7:4:4] | | | | | | | |
| Note on operating and pilot medium | Lubricated operation possible (in which case lubricated operation will always be required) | | | | | | | |
| Ambient temperature | -10 ... 60°C | | | | | | | |
| Corrosion resistance class CRC ¹⁾ | 2 - Moderate corrosion stress | | | | | | | |
| Material stops | High-alloy stainless steel | | | | Reinforced PA | | | |
| Material seals | NBR | | | | TPE-U(PU) | | | |
| Note on materials | RoHS-compliant | | | | | | | |
| LABS (PWIS) conformity | VDMA24364-B2-L | | | | | | | |

1) More information: www.festo.com/x/topic/crc

Datasheet

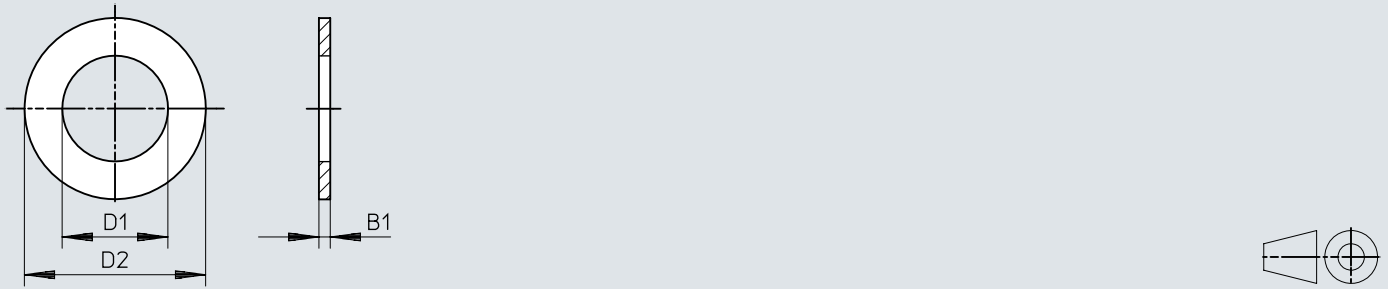
| Technical data – Sealing ring OL | | | | | | | | | |
|---|-------------------------------|----|----|------|------|------|------|------|----|
| Pneumatic connection | M5 | M6 | M7 | G1/8 | G1/4 | G3/8 | G1/2 | G3/4 | G1 |
| Tightening by hand at room temperature | yes | | | | | | | | |
| Based on standard | ISO 16030 | | | | | | | | |
| Operating pressure complete temperature range | -13.775 ... 435 psi | | | | | | | | |
| Operating pressure complete temperature range | -0.95 ... 30 bar | | | | | | | | |
| Operating pressure complete temperature range | -0.095 ... 3 MPa | | | | | | | | |
| Ambient temperature | -40 ... 100°C | | | | | | | | |
| Corrosion resistance class CRC ¹⁾ | 2 - Moderate corrosion stress | | | | | | | | |
| Material stops | Aluminium | | | | | | | | |
| Material seals | HNBR | | | | | | | | |
| Note on materials | RoHS-compliant | | | | | | | | |
| LABS (PWIS) conformity | VDMA24364-B2-L | | | | | | | | |

1) More information: www.festo.com/x/topic/crc

Dimensions

Dimensions – Sealing ring O

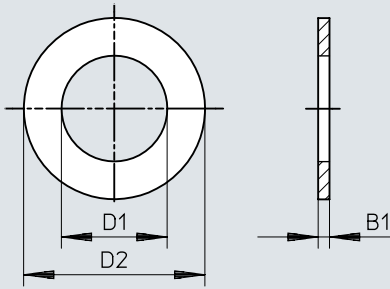
Download CAD data → www.festo.com



| | D1 | D2 | B1 |
|-----------|------|------|-----|
| O-M3-B | 2,8 | 4,8 | 0,3 |
| O-M5 | 5,1 | 8 | 1 |
| O-M5-500 | | | |
| O-1/8 | 10 | 13 | 1,5 |
| O-1/8-500 | | | |
| O-1/4 | 13,2 | 18 | 2 |
| O-1/4-200 | | | |
| O-3/8 | 16,8 | 22 | 2 |
| O-3/8-200 | | | |
| O-1/2 | 21 | 28 | 2 |
| O-1/2-100 | | | |
| O-3/4 | 26,5 | 33 | 2 |
| O-1 | 33,3 | 38,9 | 2 |

Dimensions

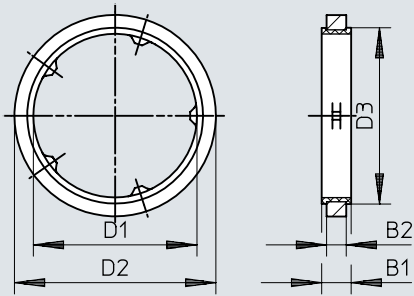
Dimensions – Sealing ring CRO

Download CAD data → www.festo.com

| | D1 | D2 | B1 |
|---------|------|------|----|
| CRO-M5 | 5,1 | 8 | 1 |
| CRO-1/8 | 10 | 13 | 2 |
| CRO-1/4 | 13,2 | 18 | 2 |
| CRO-3/8 | 16,8 | 22 | 2 |
| CRO-1/2 | 21 | 28 | 2 |
| CRO-3/4 | 26,5 | 33 | 2 |
| CRO-1 | 33,3 | 38,9 | 2 |

Dimensions

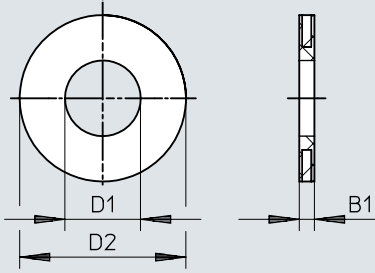
Dimensions – Sealing ring OL

Download CAD data → www.festo.com

| | D1 | D2 | D3 | B1 | B2 |
|------------|------|-----------|------|-----|-----|
| OL-M5 | 5,4 | 7,7 ±0,1 | 6,8 | 1,5 | 0,8 |
| OL-M5-500 | | | | | |
| OL-M6 | 6,4 | 8,3 ±0,1 | 7,4 | 1,5 | 0,8 |
| OL-M7 | 7,4 | 10,1 ±0,1 | 8,5 | 1,7 | 1 |
| OL-1/8 | 10,2 | 13 ±0,1 | 11,6 | 1,7 | 1 |
| OL-1/8-500 | | | | | |
| OL-1/4 | 13,7 | 17 ±0,1 | 15,1 | 2,2 | 1,5 |
| OL-1/4-200 | | | | | |
| OL-3/8 | 17,3 | 21 ±0,1 | 18,8 | 2,7 | 2 |
| OL-3/8-200 | | | | | |
| OL-1/2 | 21,6 | 25,2 ±0,1 | 23,2 | 2,7 | 2 |
| OL-1/2-100 | | | | | |
| OL-3/4 | 27 | 31,1 ±0,1 | 29 | 2,7 | 2 |
| OL-1 | 33,8 | 37,6 ±0,1 | 35,6 | 2,7 | 2 |

Dimensions

Dimensions – Sealing ring OK-M

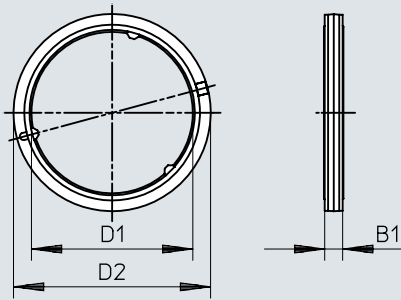
Download CAD data → www.festo.com

| | D1 | D2 | B1 |
|-------|-----|-----|-----|
| OK-M3 | 2,5 | 5,0 | 0,5 |
| OK-M5 | 4,3 | 7,8 | 0,5 |
| OK-M7 | 6,4 | 9,8 | 0,5 |

Dimensions


Dimensions – Sealing ring OK


Download CAD data → www.festo.com




| | D1 | D2 | B1 |
|--------|------|------|------|
| OK-1/8 | 9,9 | 13,2 | 1,60 |
| OK-1/4 | 13,3 | 18,3 | 2,20 |
| OK-3/8 | 16,8 | 22,3 | 2,20 |
| OK-1/2 | 21,2 | 26,7 | 2,35 |
| OK-3/4 | 26,7 | 32,6 | 2,95 |

Ordering data


| Sealing ring CRO | | | | |
|---|----------------------|----------------|----------|---------|
| | Pneumatic connection | Product weight | Part no. | Type |
|  | M5 | 0.05 g | 165191 | CRO-M5 |
| | G1/8 | 0.19 g | 575895 | CRO-1/8 |
| | G1/4 | 0.42 g | 165193 | CRO-1/4 |
| | G3/8 | 0.56 g | 165194 | CRO-3/8 |
| | G1/2 | 0.96 g | 165195 | CRO-1/2 |
| | G3/4 | 1.08 g | 165196 | CRO-3/4 |
| | G1 | 1.13 g | 165197 | CRO-1 |

| Sealing ring O | | | | | | | |
|---|----------------------|------------------------------|---|--------------|----------------|----------|-----------|
| | Pneumatic connection | Nominal torque ¹⁾ | Tolerance for nominal tightening torque | Size of pack | Product weight | Part no. | Type |
|  | M3 | | ± 20% | | 0.12 g | 30290 | O-M3-B |
| | M5 | 1.78 Nm | | | 0.05 g | 3565 | O-M5 |
| | G1/8 | 10.55 Nm | | 500 | 0.12 g | 2223 | O-1/8 |
| | | | | 500 | 0.12 g | 534227 | O-1/8-500 |
| | G1/4 | 9.05 Nm | | 200 | 0.31 g | 2224 | O-1/4 |
| | | | | 200 | 0.31 g | 534228 | O-1/4-200 |
| | G3/8 | 38.5 Nm | | 200 | 0.4 g | 2225 | O-3/8 |
| | | | | 200 | 0.4 g | 534229 | O-3/8-200 |
| | G1/2 | 47.9 Nm | | 100 | 0.72 g | 2226 | O-1/2 |
| | G3/4 | 45 Nm | | | 0.83 g | 2227 | O-3/4 |
| | | | | | 0.8 g | 210893 | O-1 |


1) Tolerance for nominal tightening torque: ±20%

| Sealing ring NPAS | | | | | | | |
|---|----------------------|------------------------------|---|--------------|----------------|----------|------------------------|
| | Pneumatic connection | Nominal torque ¹⁾ | Tolerance for nominal tightening torque | Size of pack | Product weight | Part no. | Type |
|  | G1/8 | 6.5 Nm | ± 10% | 10 | 0.02 g | 2652516 | NPAS-C1-R-G18-P-FD-P10 |
| | G1/4 | 20 Nm | | | 0.05 g | 2652517 | NPAS-C1-R-G14-P-FD-P10 |
| | G3/8 | 35 Nm | | | 0.15 g | 2652519 | NPAS-C1-R-G38-P-FD-P10 |

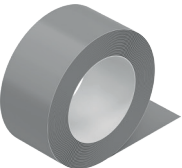
1) Tolerance for nominal tightening torque: ±10%


| Sealing ring OK | | | | | | | |
|---|----------------------|----------------|---|----------------|----------|--------|--|
| | Pneumatic connection | Nominal torque | Tolerance for nominal tightening torque | Product weight | Part no. | Type | |
|  | M3 | 0.48 Nm | ± 55% | 0.1 g | 130849 | OK-M3 | |
| | M5 | 1.33 Nm | ± 20% | | 130850 | OK-M5 | |
| | M7 | 3.35 Nm | | | 130851 | OK-M7 | |
| | G1/8 | 3.5 Nm | ± 10% | 0.12 g | 531771 | OK-1/8 | |
| | G1/4 | 11 Nm | | 0.32 g | 531772 | OK-1/4 | |
| | G3/8 | 12.5 Nm | ± 20% | 0.44 g | 531773 | OK-3/8 | |
| | G1/2 | 14 Nm | | 0.6 g | 531774 | OK-1/2 | |
| | G3/4 | 35 Nm | ± 10% | 1 g | 531775 | OK-3/4 | |

Ordering data

| Sealing ring OL | | | | | | | |
|--|----------------------|------------------------------|---|----------------|----------------|-------------------|------------------|
| | Pneumatic connection | Nominal torque ¹⁾ | Tolerance for nominal tightening torque | Size of pack | Product weight | Part no. | Type |
|  | M5 | 2.5 Nm | ± 20% | 500 | 0.06 g | 34634 | OL-M5 |
| | M6 | | | | 0.05 g | 534231 | OL-M5-500 |
| | M7 | 3 Nm | | 0.1 g | 161180 | OL-M6 | |
| | G1/8 | 6 Nm | | 0.14 g | 8153155 | OL-M7 | |
| | G1/4 | | | 500 | 0.32 g | 33840 | OL-1/8 |
| | G1/4 | 10 Nm | | 500 | 534232 | OL-1/8-500 | |
| | G3/8 | 13 Nm | | 200 | 34635 | OL-1/4 | |
| | G3/8 | | | 200 | 534233 | OL-1/4-200 | |
| | G1/2 | 23 Nm | | 200 | 34636 | OL-3/8 | |
| | G1/2 | | | 200 | 534234 | OL-3/8-200 | |
| | G3/4 | 23 Nm | | 100 | 34637 | OL-1/2 | |
| | G3/4 | | | 100 | 534235 | OL-1/2-100 | |
| G1 | | | 0.95 g | 34638 | OL-3/4 | | |
| | | | 1.09 g | 8153156 | OL-1 | | |


1) Tolerance for nominal tightening torque: ±20%

| Thread sealing tape GWB | | | | | | |
|--|--------|-------|-------------------|------------------------|-------------|----------------|
| | Length | Width | Note on materials | LABS (PWIS) conformity | Part no. | Type |
|  | 12 m | 12 mm | RoHS-compliant | VDMA24364-B1/B2-L | 9076 | GWB-0,1 |

| Sealing ring assortment OK-S1 | | | | | | |
|--|-------------------------------|--|-------------------|------------------------|---------------|--------------|
| | Short type code ¹⁾ | Corrosion resistance class CRC ²⁾ | Note on materials | LABS (PWIS) conformity | Part no. | Type |
|  | OK | 0 - No corrosion stress | RoHS-compliant | VDMA24364-B1/B2-L | 570465 | OK-S1 |

1) Quantity: OK-M3 (50); OK-M5 (100); OK-M7 (50); OK-1/8 (100); OK-1/4 (100); OK-3/8 (40); OK-1/2 (30); OK-3/4 (10)

2) More information: www.festo.com/x/topic/crc

| Sealing ring assortment OL-S1 | | | | | | |
|--|-------------------------------|--|-------------------|------------------------|---------------|--------------|
| | Short type code ¹⁾ | Corrosion resistance class CRC ²⁾ | Note on materials | LABS (PWIS) conformity | Part no. | Type |
|  | OL | 1 - Low corrosion stress | RoHS-compliant | VDMA24364-B1/B2-L | 161355 | OL-S1 |

1) Quantity: OL-M5 (50); OL-1/8 (100); OL-1/4 (100); OL-3/8 (40); OL-1/2 (30); OL-3/4 (10)

2) More information: www.festo.com/x/topic/crc