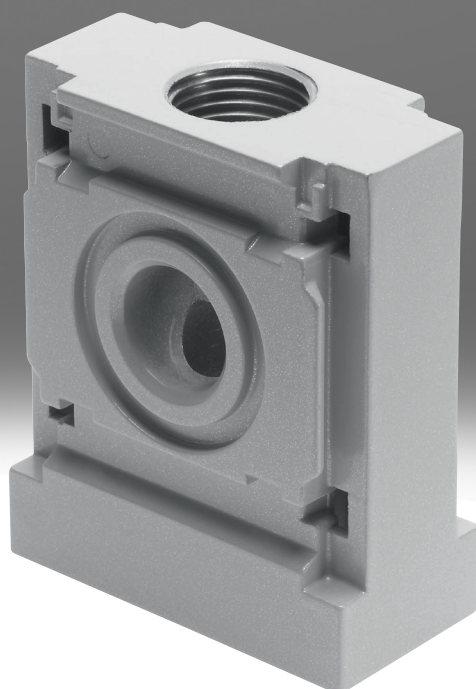


Distributor block MS6-FRM-FRZ

FESTO



Characteristics

At a glance

- Grid dimension: 62 mm
- Outlet at top and bottom
- Can be used as an intermediate distributor for varying air qualities
- Can be used as an adapter between two pressure regulators with pressure gauge with large rotary knob for size MS6

Product segmentation



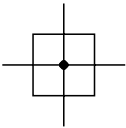
Festo Core Range

Solves the majority of your automation tasks

With the Festo Core Range, we have selected the most important products and functions from our broad product catalogue, and added the quickest delivery. the Core Range offers you the best value with the expected high Festo quality.

- Quickest delivery, worldwide – wherever, whenever
- Expected high Festo quality
- Easy and fast to select

Function



Air distributor with 4 connections

Width

Half grid width (31 mm)

Type code

001	Series
MS	MS series

002	Size
6	Grid dimension 62 mm

003	Function
FRM	Branching module

004	Width
FRZ	Half grid width

Datasheet

General technical data

Pneumatic connection, port 3	G1/2
Pneumatic connection, port 4	G1/2
Design	Branching module
Mounting position	optional

Standard nominal flow rate qnN

Standard nominal flow rate in main flow direction 1->2	14,600 l/min
Standard nominal flow rate, outlet upwards	10,400 l/min
Standard nominal flow rate, outlet downwards	9,850 l/min

Operating and environmental conditions

Operating pressure	0 ... 20 bar
Operating medium	Compressed air to ISO 8573-1:2010 [7:4:4], Inert gases
Note on operating and pilot medium	Lubricated operation possible (in which case lubricated operation will always be required)
Ambient temperature	-10 ... 60°C
Media temperature	-10 ... 60°C
Storage temperature	-10 ... 60°C
Corrosion resistance class CRC ¹⁾	2 - Moderate corrosion stress
Approval	c UL us - Recognized (OL)

1) Corrosion resistance class CRC 2 to Festo standard FN 940070

Moderate corrosion stress. Indoor applications in which condensation can occur. External visible parts with primarily decorative surface requirements that are in direct contact with a normal industrial environment.

Weight

Product weight	163 g
----------------	-------

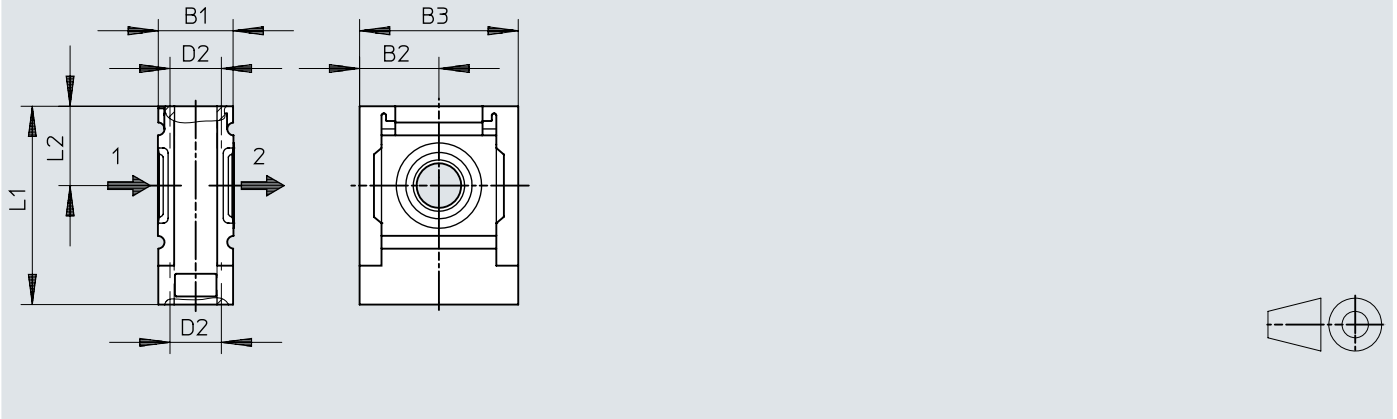
Materials

Material housing	Die-cast aluminium
Note on materials	RoHS-compliant
LABS (PWS) conformity	VDMA24364-B1/B2-L

Dimensions

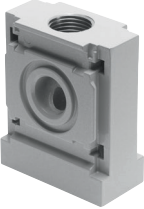
Dimensions – Distributor blocks

Download CAD data → www.festo.com

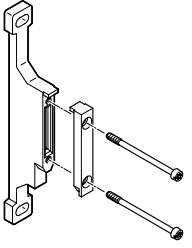


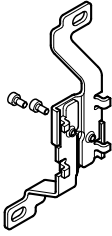
	B1	B2	B3	D2	L1	L2
MS6-FRM-FRZ	31	31	62	G1/2	76,5	31

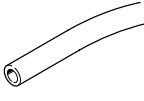
Ordering data

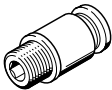
Ordering data			
	Pneumatic connection, port 3	Part no.	Type
	G1/2	★ 549337	MS6-FRM-FRZ

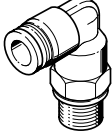
Accessories

Mounting bracket MS6-WP			
	Size	Part no.	Type
	6	★ 532195	MS6-WP

Mounting bracket MS6-WB			
	Size	Part no.	Type
	6	★ 532196	MS6-WB

Tubing PUN-H			
	Colour	Part no.	Type
	Blue	★ 197387	PUN-H-12X2-BL
	Natural	★ 197380	PUN-H-12X2-NT
	Black	★ 197394	PUN-H-12X2-SW
	Translucent blue	★ 8048712	PUN-H-12X2-TBL-200

Push-in fittings QS			
	Nominal size	Part no.	Type
	8.4 mm	★ 186115	QS-G1/2-12-I
	11 mm	★ 186104	QS-G1/2-12

Push-in L-fittings QSL			
	Nominal size	Part no.	Type
	10.3 mm	★ 186125	QSL-G1/2-12