

Exhaust air flow control valves






# Exhaust air flow control valves

Product range overview

## Function

Exhaust air flow control valves are screwed into the exhaust controls of control valves or drives. They enable the piston speed of cylinders or rotary drives to be controlled by restricting the air exhaust. This is done using the adjusting element. The air is exhausted via an integrated silencer which reduces the noise level.

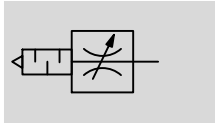
Design	Valve function	Design	Type	Pneumatic connection 1	qn <sup>1)</sup> [l/min]	Adjusting element	→ Page/ Internet
<b>Exhaust air flow control valve</b>	Sintered metal						
	Flow control/ silencer function		GRE	G1/8, G1/4, G3/8, G1/2	0 ... 3,600	Slotted head screw	3
<b>Flow control/ silencer</b>	Plastic						
	Flow control/ silencer function		VFFK	M5, M7, R1/8, R1/4	0 ... 420	Knurled screw	5
			GRU	G1/8, G1/4, G3/8, G1/2, G3/4	0 ... 8,000	Slotted head screw	8



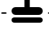
1) Standard flow rate

# Exhaust air flow control valves GRE

Technical data

Function



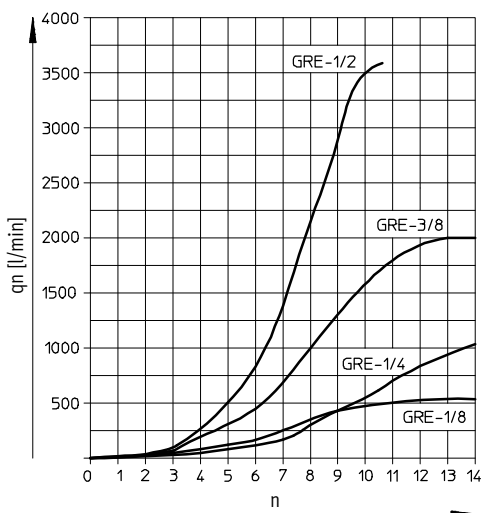
-  - Flow rate  
0 ... 3,600 l/min
-  - Temperature range  
-10 ... +70 °C
-  - Operating pressure  
0 ... 10 bar



General technical data				
Valve function		Flow control/silencer function		
Pneumatic connection 1		G $\frac{1}{8}$	G $\frac{1}{4}$	G $\frac{3}{8}$
Adjustment component	Slotted head screw			
Type of mounting	Screw-in			
Mounting position	Any			
Nominal tightening torque	[Nm]	12 ±20	-	-
Max. tightening torque	[Nm]	-	-	15

Operating and environmental conditions				
Pneumatic connection 1		G $\frac{1}{8}$	G $\frac{1}{4}$	G $\frac{3}{8}$
Operating pressure	[bar]	0 ... 10		
Operating medium		Compressed air in accordance with ISO 8573-1:2010 [7:-:-]	Compressed air in accordance with ISO 8573-1:2010 [7:-:-]	Compressed air in accordance with ISO 8573-1:2010 [7:4:4]
Note on operating/pilot medium	Operation with lubricated medium possible (in which case lubricated operation will always be required)			
Ambient temperature	[°C]	-10 ... +70		
Temperature of medium	[°C]	-10 ... +70		

## Standard flow rate $q_n$ at 6 bar $\rightarrow$ 0 bar as a function of spindle rotations n

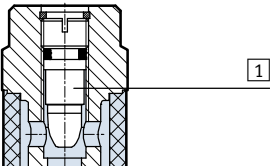


# Exhaust air flow control valves GRE

Technical data

**Materials**

Sectional view




Exhaust air flow control valve		
1	Adjusting screw	Brass
2	Threaded plug	Wrought aluminium alloy
-	Seals	NBR
Note on materials		RoHS-compliant

**Dimensions** Download CAD data → [www.festo.com](http://www.festo.com)



Type	Connection D	D1 ∅	L	L1	⌀
GRE-1/8	G1/8	15	27.1	5.1	14
GRE-1/4	G1/4	18.2	32.1	6.1	17
GRE-3/8	G3/8	25	41.1	7.1	22
GRE-1/2	G1/2	27	44.6	8.6	24

**Ordering data**

	Pneumatic connection 1	Standard nominal flow rate qnN at 6 bar → 5 bar in direction of flow control [l/min]	Standard flow rate qn at 6 bar → 0 bar in direction of flow control [l/min]	Weight [g]	Part No.	Type
	G1/8	520	0 ... 520	15	10351	GRE-1/8
	G1/4	996	0 ... 996	25	10352	GRE-1/4
	G3/8	2,000	3 ... 2,000	50	35310	GRE-3/8
	G1/2	3,600	0 ... 3,600	75	10353	GRE-1/2

# Flow control/silencers VFFK

Type codes

VFFK - C - K - M7 - P

**Type**

VFFK	Flow control/silencer
------	-----------------------

**Design**

C	Inline
---	--------

**Adjusting element**

K	Knurled screw
---	---------------

**Pneumatic connection 1**

M5	Thread M5
M7	Thread M7
R18	Thread R1/8
R14	Thread R1/4

**Additional feature**

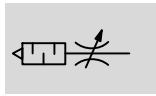
P	Polymer silencer
---	------------------

# Flow control/silencers VFFK

Technical data

FESTO

Function



- - Flow rate  
0 ... 420 l/min
- - Temperature range  
0 ... +60 °C
- - Operating pressure  
0 ... 10 bar



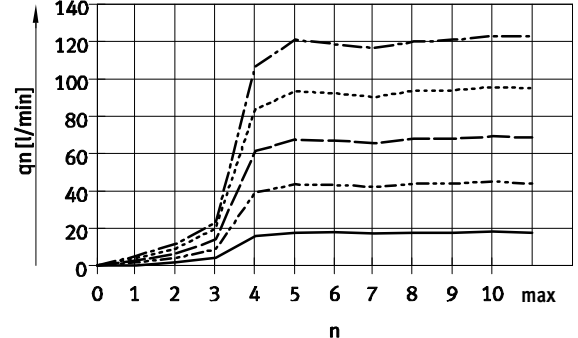
General technical data				
Valve function	Flow control/silencer function			
Pneumatic connection 1	M5	M7	R1/8	R1/4
Adjusting element	Knurled screw			
Type of mounting	Screw-in			
Mounting position	Any			
Type of seal on threaded plug	Sealing ring		Coating	
Nominal tightening torque [Nm]	1.4 ±20%	3.8 ±20%	-	

Operating and environmental conditions	
Operating pressure complete [bar]	0 ... 10
temperature range	
Operating medium	Compressed air according to ISO 8573-1:2010 [7:4:4]
Note about the operating/pilot medium	Lubricated operation possible
Ambient temperature [°C]	0 ... +60
Temperature of medium [°C]	0 ... +60
Storage temperature [°C]	0 ... +60

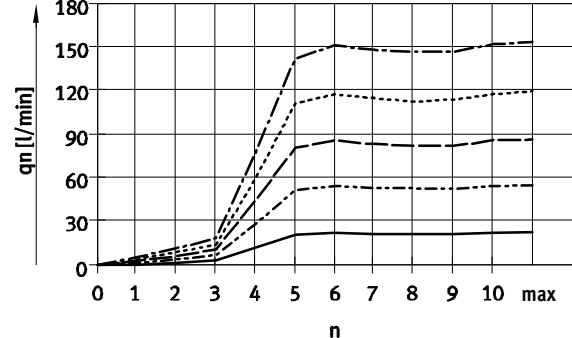
Materials		
Type	VFFK-C-K-M...-P	VFFK-C-K-R...-P
Silencer insert	PE	
Threaded plug	Nickel-plated brass	
Regulating screw	Nickel-plated brass	
Knurled nut	Aluminium	
Seals	NBR	-
Note on materials	RoHS-compliant	

Standard flow rate  $q_n$  [l/min] as a function of turns of the adjusting screw  $n$

VFFK-C-K-M5-P



VFFK-C-K-M7-P



- P1 = 1 bar
- - - P1 = 3 bar
- - - - P1 = 5 bar
- · · · · P1 = 7 bar
- · - · - P1 = 9 bar

Flow rate tolerance: ±20%

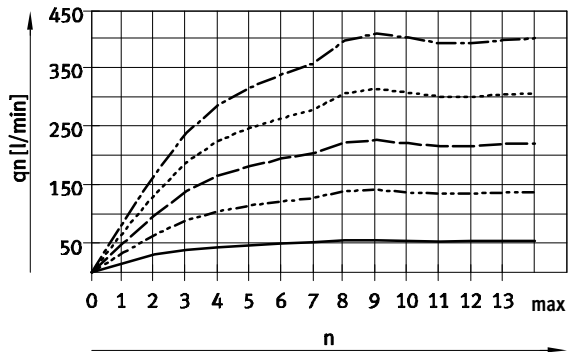
# Flow control/silencers VFFK

Technical data

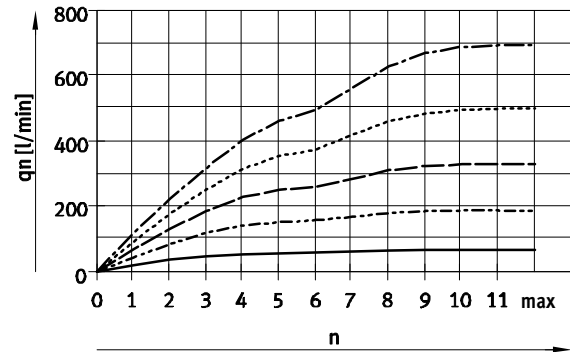
FESTO

## Standard flow rate $q_n$ [l/min] as a function of turns of the adjusting screw $n$

VFFK-C-K-R18-P



VFFK-C-K-R14-P

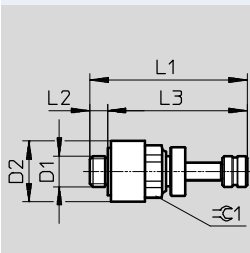


Flow rate tolerance:  $\pm 20\%$

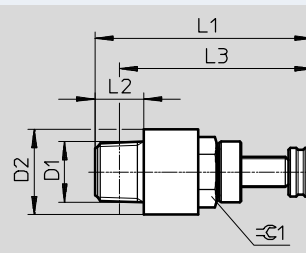
## Dimensions

Download CAD data [www.festo.com](http://www.festo.com)

VFFK-C-K-M...-P



VFFK-C-K-R...-P



Type	Connection D1	D2 ∅	L1		L2	L3		⌀ 1
			min.	max.		min.	max.	
VFFK-C-K-M5-P	M5x0.8	10	20.6	23.4	3	17.6	20.4	8
VFFK-C-K-M7-P	M7x1	10	24.1	26.9	5.5	18.6	21.4	8
VFFK-C-K-R18-P	R $\frac{1}{8}$	14	29.1	35.8	8	25.1	31.8	10
VFFK-C-K-R14-P	R $\frac{1}{4}$	18	31.1	37	10.8	25.1	31	14

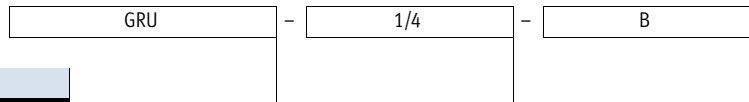
## Ordering data

	Pneumatic connection 1	Standard flow rate $q_n$ at 6 bar $\rightarrow$ 0 bar [l/min]	Weight [g]	Part No.	Type
	M5	0 ... 80	4.5	133140	VFFK-C-K-M5-P
	M7	0 ... 100	6.1	133141	VFFK-C-K-M7-P
	R $\frac{1}{8}$	0 ... 270	13.5	133142	VFFK-C-K-R18-P
	R $\frac{1}{4}$	0 ... 420	25	133143	VFFK-C-K-R14-P

# Flow control/silencers GRU

Type codes

FESTO



Type	
GRU	Flow control/silencer

Pneumatic connection 1	
1/8	Thread G1/8
1/4	Thread G1/4
3/8	Thread G3/8
1/2	Thread G1/2
3/4	Thread G3/4

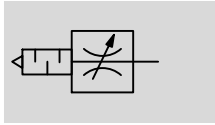
Generation	
B	B series



# Flow control/silencers GRU

Technical data

Function



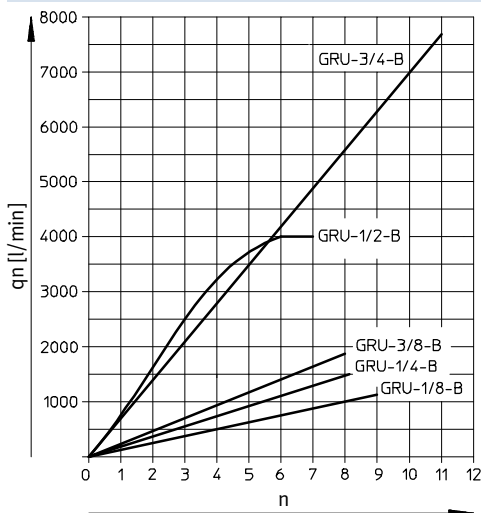
- - Flow rate  
0 ... 8,000 l/min
- - Temperature range  
-10 ... +70 °C
- - Operating pressure  
0 ... 10 bar



General technical data					
Valve function	Flow control/silencer function				
Pneumatic connection 1	G1/8	G1/4	G3/8	G1/2	G3/4
Adjustment component	Slotted head screw				
Type of mounting	Screw-in				
Mounting position	Any				

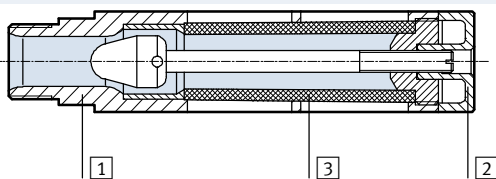
Operating and environmental conditions	
Operating pressure [bar]	0 ... 10
complete temperature range	
Operating medium	Compressed air in accordance with ISO 8573-1:2010 [7:--:-]
Note on operating/pilot medium	Operation with lubricated medium possible
Ambient temperature [°C]	-10 ... +70
Temperature of medium [°C]	-10 ... +70

## Standard flow rate $q_n$ at 6 bar $\rightarrow$ 0 bar as a function of spindle rotations $n$



## Materials

Sectional view



Flow control/silencer		
1	Housing, threaded plug	Aluminium
2	Adjusting screw	PA
3	Silencer insert	PE
Note on materials		RoHS-compliant

# Flow control/silencers GRU

Technical data

**Dimensions** Download CAD data → [www.festo.com](http://www.festo.com)

1 Adjusting screw

Type	Connection D	D1 Ø	L	L1	⌀
GRU-1/8	G1/8	16	46	5.4	14
GRU-1/4	G1/4	19.5	63.3	6.4	17
GRU-3/8	G3/8	25	95.3	7.5	19
GRU-1/2	G1/2	28	130	14	24
GRU-3/4	G3/4	38	157	16	32

**Ordering data**

	Pneumatic connection 1	Standard flow rate qn at 6 bar → 0 bar in direction of flow control [l/min]	Weight [g]	Part No.	Type
	G1/8	0 ... 1,000	10	<b>9516</b>	<b>GRU-1/8-B</b>
	G1/4	0 ... 1,500	25	<b>9517</b>	<b>GRU-1/4-B</b>
	G3/8	0 ... 1,700	55	<b>9518</b>	<b>GRU-3/8-B</b>
	G1/2	0 ... 4,000	100	<b>9519</b>	<b>GRU-1/2-B</b>
	G3/4	0 ... 8,000	170	<b>9520</b>	<b>GRU-3/4-B</b>

# Festo - Your Partner in Automation



**1 Festo Inc.**  
5300 Explorer Drive  
Mississauga, ON L4W 5G4  
Canada

**Festo Customer Interaction Center**  
Tel: 1 877 463 3786  
Fax: 1 877 393 3786  
Email: [customer.service.ca@festo.com](mailto:customer.service.ca@festo.com)



**2 Festo Pneumatic**  
Av. Ceylán 3,  
Col. Tequesquináhuac  
54020 Tlalneantla,  
Estado de México

**Multinational Contact Center**  
01 800 337 8669  
[ventas.mexico@festo.com](mailto:ventas.mexico@festo.com)



**3 Festo Corporation**  
1377 Motor Parkway  
Suite 310  
Islandia, NY 11749

**Festo Customer Interaction Center**  
1 800 993 3786  
1 800 963 3786  
[customer.service.us@festo.com](mailto:customer.service.us@festo.com)



**4 Regional Service Center**  
7777 Columbia Road  
Mason, OH 45040

Connect with us



[www.festo.com/socialmedia](http://www.festo.com/socialmedia)



[www.festo.com](http://www.festo.com)

Subject to change