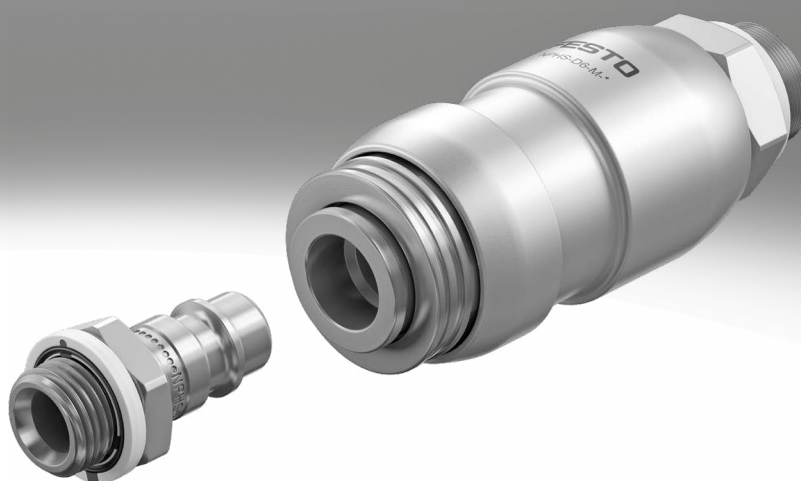


Operating mode coupling sockets/quick coupling plugs NPHS

FESTO

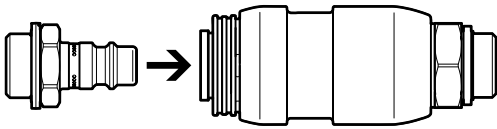


Key features

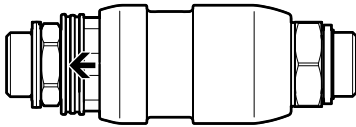
Operating mode

Safety coupling with coupling socket NPHS-D6-M and quick coupling plug NPHS-S6

Coupling

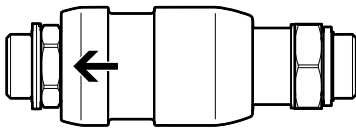


Push the plug into the socket to lock the coupling. The plug automatically engages with an audible click when in a specific position.



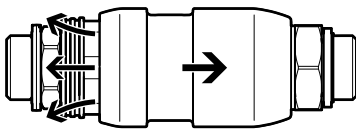
When the plug is engaged, the releasing sleeve shifts slightly in the direction of the plug. This releases the locking mechanism between the releasing sleeve and the sliding sleeve. The sliding sleeve can now be actuated.

Pressurisation



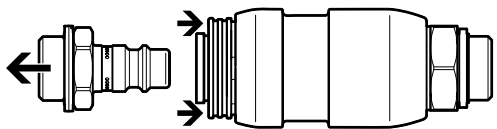
To pressurise, push the sliding sleeve in the direction of the plug.

Exhausting



To exhaust, push the sliding sleeve in the direction of the thread on the coupling socket. The air from the plug and the components connected to it can escape. The air at the coupling end is shut off. The releasing sleeve can now be accessed.

Decoupling



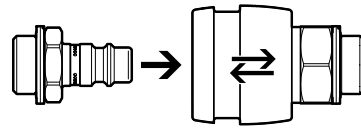
Unlock the plug fully by pushing the releasing sleeve. The plug should only be removed after all the air has been exhausted. With the plug removed, the two sleeves cannot slide or be pushed.

Note

Pressurise or exhaust the coupling to a maximum of 10 bar only. Hearing protection is recommended, especially at higher operating pressures.

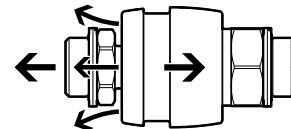
Safety coupling with coupling socket NPHS-D6-P and quick coupling plug NPHS-S6

Coupling



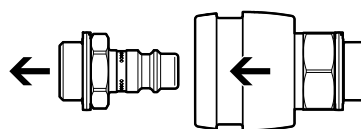
Push the plug into the socket to lock the coupling. The plug automatically engages with an audible click when in a specific position. During this process, the releasing sleeve moves briefly back and then forward again.

Exhausting



To exhaust, first push the releasing sleeve in the direction of the thread on the coupling socket. This releases the pin locking mechanism of the coupling. The plug moves approx. 5 mm out of the coupling and is held in this position by the ball locking mechanism of the coupling. The air from the plug and the components connected to it can escape. The air at the coupling end is shut off.

Decoupling



Next, release the plug from the ball locking mechanism by pulling the releasing sleeve. This releases the plug completely so that it can be removed from the socket. The plug should only be removed after all the air has been exhausted.

Product range overview

Coupling/tubing combination options		Coupling socket/plug				
		KD1/KS1	KD2/KS2	KD3/KS3	KD4/KS4	NPHS-D6/NPHS-S6
With standard I.D.	Polyurethane					
	PU-9	–	–	–	■	■
With standard O.D.	Polyurethane					
	PUN-3	■	–	–	–	–
	PUN-4	–	■	–	–	–
	PUN-6	–	■	■	■	–
	PUN-8	–	–	■	■	–
	Polyamide					
	PAN-4	–	■	–	–	–
	PAN-6	–	■	■	■	–
PAN-8	–	–	■	■	–	

Coupling socket/plug combination options		Size 1		Size 2		Size 3 ¹⁾		Size 4 ¹⁾		Size: 6	
		Socket KD1	Plug KS1	Socket KD2	Plug KS2	Socket KD3	Plug KS3	Socket KD4	Plug KS4	Socket NPHS-D6	Plug NPHS-S6
Male thread											
M3	■	–	–	–	–	–	–	–	–	–	–
M5	–	–	■	■	–	–	–	–	–	–	–
G1/8	–	–	–	–	■	■	–	–	–	■	■
G1/4	–	–	–	–	■	■	■	■	■	■	■
G3/8	–	–	–	–	–	–	■	■	■	■	■
G1/2	–	–	–	–	–	–	■	■	■	■	■
Female thread											
M5	–	–	■	■	–	–	–	–	–	–	–
G1/8	–	–	–	–	■	■	–	–	–	–	–
G1/4	–	–	–	–	■	■	■	■	■	■	■
G3/8	–	–	–	–	–	–	■	■	■	■	■
G1/2	–	–	–	–	–	–	■	■	■	■	■
Quick connector with union nut											
CK-3	–	–	■	■	–	–	–	–	–	–	–
CK-4	–	–	■	■	■	■	–	■	–	–	–
CK-6	–	–	–	–	■	■	■	■	–	–	–
CK-9	–	–	–	–	–	–	■	■	–	–	–
Barbed fitting											
CN-2	–	■	–	–	–	–	–	–	–	–	–
N-6	–	–	–	–	–	–	–	■	–	–	–
N-9	–	–	–	–	–	–	■	■	■	■	■

1) Coupling socket/quick coupling plug, shut-off at both ends: KD3-...-A-R thread G1/8 only, KD4-...-A-R thread G1/4 only