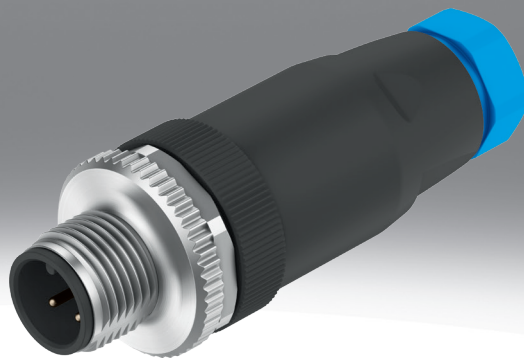


Plug, socket NECB

FESTO



Type code

001	Series	
NECB	Push-in connector	
002	Type of connector	
	Socket	
S	Plug	
003	Connection technology 1	
M8	M8x1, A-coded to EN 61076-2-104	
M12	M12x1, A-coded to EN 61076-2-101	
004	Cable outlet right	
G	Straight	
W	Angled	

005	Socket/plug connection pattern	
3	3-pin	
4	4-pin	
5	5-pin	
006	Connection technology 2	
C2	Screw terminal	
007	Additional features	
	None	
D	Double connection	

Datasheet

Technical data – Electrical connection 1

Electrical connection 1, connector system	M12x1, A-coded to EN 61076-2-101	M8x1, A-coded, to EN 61076-2-104
Electrical connection 1, connection type	Socket; Plugs	Plugs
Cable outlet	Straight; Angled	Straight
Electrical connection 1, number of connections/cores	4; 5	3; 4
Electrical connection 1, used connections/cores	4; 5	3; 4
Electrical connection 1, type of mounting	Screw-type lock with 18 mm hexagon and longitudinal knurl, Rotatable	Screw-type lock with hexagon A/F 9 mm and longitudinal knurl, Rotatable
Frequency of connection	100	

Technical data – Electrical connection 2, plug M8

Electrical connection 2, connection type	2x cable	Cable
Electrical connection 2, connector system	Screw terminal	
Electrical connection 2, number of connections/cores	4	3; 4
Electrical connection 2, used connections/cores	4	3; 4
Cable fitting	M14	3/8-24 UNF-2A
Cable diameter	2 ... 3.8 mm	2.1 ... 5 mm
Note on the cable diameter	One cable through-feed for diameters 5.0 – 7.6 mm Two cable through-feeds for diameters 2.0 – 3.8 mm	–
Connection cross section	0.14 ... 0.75 mm ²	
Note on connection cross-section	0.1 mm ² with wire end sleeve	

Technical data – Electrical connection 2, socket M12

Electrical connection 2, connection type	Cable	
Electrical connection 2, connector system	Screw terminal	
Electrical connection 2, number of connections/cores	4; 5	
Electrical connection 2, used connections/cores	4; 5	
Cable fitting	Pg 9	
Cable diameter	3.8 ... 9 mm	
Connection cross section	0.14 ... 0.75 mm ²	
Note on connection cross-section	0.1 mm ² with wire end sleeve	

Technical data – Electrical connection 2, plug M12

Electrical connection 2, connection type	2x cable	Cable
Electrical connection 2, connector system	Screw terminal	
Electrical connection 2, number of connections/cores	4; 5	
Electrical connection 2, used connections/cores	4; 5	
Cable fitting	Pg11	Pg7
Cable diameter	2.1 ... 5.6 mm	2.1 ... 7 mm
Note on the cable diameter	2 cable through-feeds available	–
Connection cross section	0.14 ... 0.75 mm ²	
Note on connection cross-section	0.1 mm ² with wire end sleeve, 0.1 mm ² with wire ferrule	0.1 mm ² with wire end sleeve

Datasheet

Technical data – Electrical

Operational voltage range DC	0 ... 60 V
Operational voltage range AC	0 ... 48 V
Immunity to surge	1.5 kV
Current rating at 40° C	4 A
Pollution degree	3
Protective conductor connection	Not available

Materials

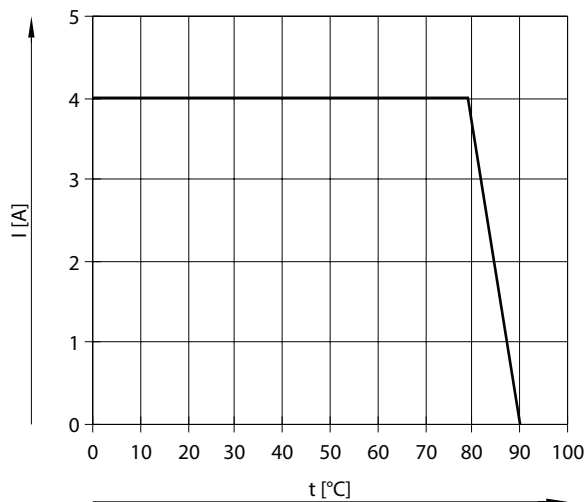
Material housing	PA66-GF30
Housing colour	Black
Material seals	FPM
Material screws	Nickel-plated steel
Material screw-type lock	Die-cast zinc, nickel-plated
Material electrical contact	Brass, nickel-plated and gold-plated
Note on materials	RoHS-compliant
LABS (PWIS) conformity	VDMA24364-B2-L

Operating and environmental conditions

Ambient temperature	-25 ... 90°C
Note on ambient temperature	Note derating
Corrosion resistance class CRC ¹⁾	1 - Low corrosion stress
Degree of protection	IP65, IP67
Note on degree of protection	In assembled state
Approval	c UL us listed (OL)
Certificate issuing authority	UL E474609
Instructions on use	Only energy-limited circuits with a maximum current of 4 A at a max. open circuit voltage of 30 V DC are permissible for supplying electrically actuated valves from Festo.

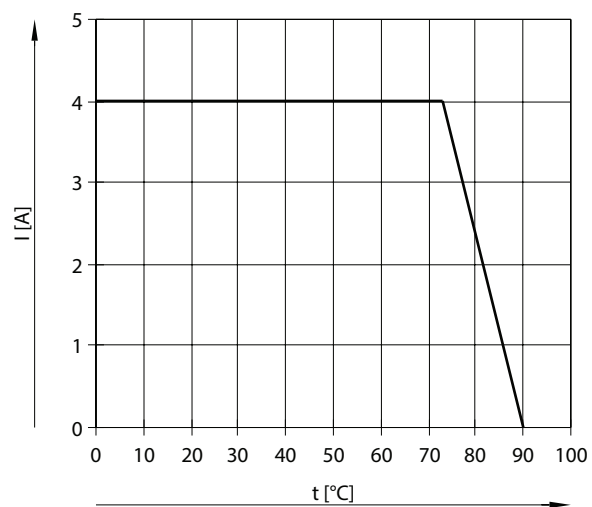
1) More information: www.festo.com/x/topic/crc

Current rating as a function of ambient temperature, connection technology M8x1



Datasheet

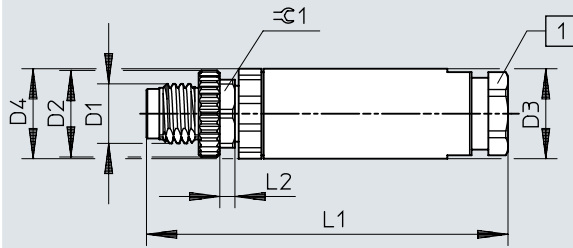
Current rating as a function of ambient temperature, connection technology M12x1



Dimensions

Dimensions – M8 plug, straight, single cable

Download CAD data → www.festo.com

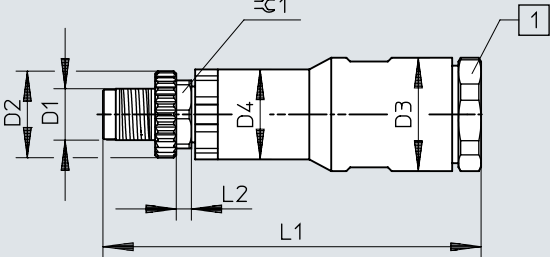


	D1	D2 Ø	D3 Ø	L1	L2	$\approx C1$
NECB-S-M8G3	M8x1	11,5	11,8	48	2	9
NECB-S-M8G4						

Dimensions

Dimensions – M8 plug, straight, double cable

Download CAD data → www.festo.com

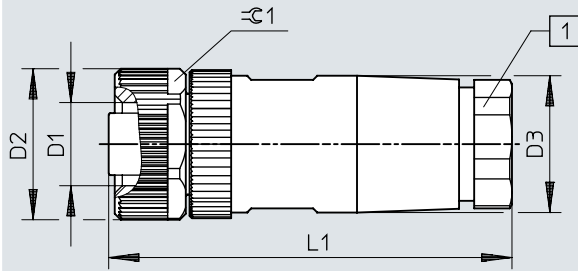


	D1	D2 ø	D2 ø	D4 ø	L1	L2	1:1
NECB-S-M8G4-...-D	M8x1	11,5	15	11,8	50	2	9

Dimensions

Dimensions – M12 straight socket, single cable

Download CAD data → www.festo.com

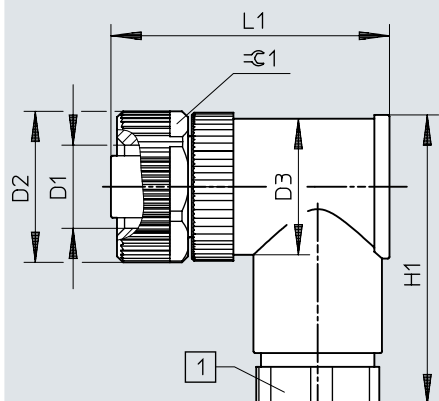


	D1	D2 ∅	D3 ∅	L1	M12x1
NECB-M12G4	M12x1	20	18	55,6	18
NECB-M12G5					

Dimensions

Dimensions – M12 socket, angled, single cable

Download CAD data → www.festo.com

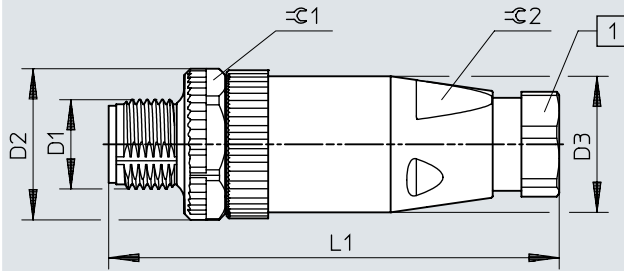


	D1	D2 ∅	D3 ∅	H1	L1	≡C1
NECB-M12W4	M12x1	20	18	39	36,9	18
NECB-M12W5						

Dimensions

Dimensions – M12 plug, straight, single cable

Download CAD data → www.festo.com

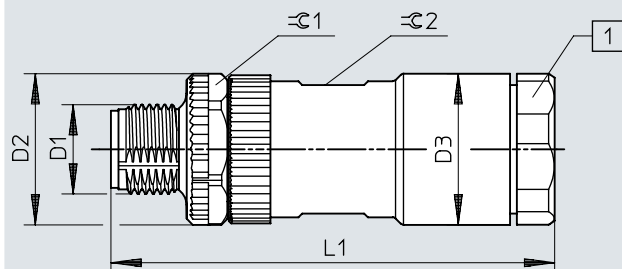


	D1	D2 ø	D3 ø	L1	C1	C2
NECB-S-M12G4	M12x1	20	18	36,9	18	14
NECB-S-M12G5						

Dimensions

Dimensions – M12 plug, straight, double cable

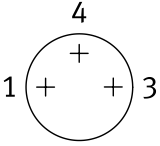
Download CAD data → www.festo.com



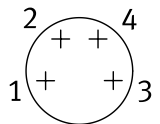
	D1	D2 ∅	D3 ∅	L1	∅1	∅2
NECB-S-M12G4-...-D	M12x1	20	20	60	18	17
NECB-S-M12G5-...-D						

Ordering data

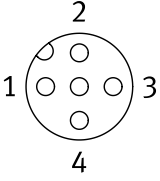
Ordering data – Electrical connection 1 plug M8, 3-pin

	Cable outlet	Electrical connection 2, connection type	Cable diameter	Product weight	Part no.	Type
	Straight	Cable	2.1 ... 5 mm	5 g	8162298	NECB-S-M8G3-C2

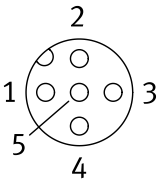
Ordering data – Electrical connection 1 plug M8, 4-pin

	Cable outlet	Electrical connection 2, connection type	Cable diameter	Product weight	Part no.	Type
	Straight	2x cable	2 ... 3.8 mm	8 g	8162300	NECB-S-M8G4-C2-D
		Cable	2.1 ... 5 mm	5 g	8162299	NECB-S-M8G4-C2

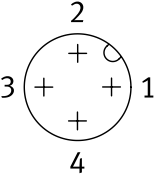
Ordering data – Electrical connection 1 M12 socket, 4-pin

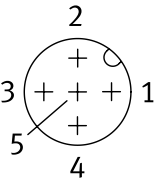
	Cable outlet	Electrical connection 2, connection type	Cable diameter	Product weight	Part no.	Type
	Straight	Cable	3.8 ... 9 mm	24 g	8162290	NECB-M12G4-C2
	Angled			25 g	8162292	NECB-M12W4-C2

Ordering data – Electrical connection 1 M12 socket, 5-pin

	Cable outlet	Electrical connection 2, connection type	Cable diameter	Product weight	Part no.	Type
	Straight	Cable	3.8 ... 9 mm	26 g	8162291	NECB-M12G5-C2
	Angled			23 g	8162293	NECB-M12W5-C2

Ordering data

Ordering data – Electrical connection 1 plug M12, 4-pin						
	Cable outlet	Electrical connection 2, connection type	Cable diameter	Product weight	Part no.	Type
	Straight	2x cable	2.1 ... 5.6 mm	24 g	8162295	NECB-S-M12G4-C2-D
		Cable	2.1 ... 7 mm	18 g	8162294	NECB-S-M12G4-C2

Ordering data – Electrical connection 1 plug M12, 5-pin						
	Cable outlet	Electrical connection 2, connection type	Cable diameter	Product weight	Part no.	Type
	Straight	2x cable	2.1 ... 5.6 mm	25 g	8162297	NECB-S-M12G5-C2-D
		Cable	2.1 ... 7 mm	19 g	8162296	NECB-S-M12G5-C2