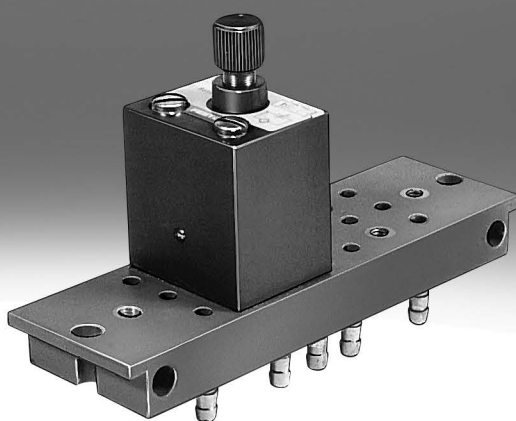


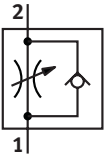
One-way flow control valve, M5 compact system GRF

FESTO



Characteristics

At a glance



Shut-off/flow control valve on adapter plate for mounting frame 2N.

- M5 compact system
- Control cabinet installation

Diagrams

[Link](#)  [grf](#)



The diagrams shown in this document are also available online. These can be used to display precise values.

Datasheet

General technical data

Valve function	One-way flow control function
Pneumatic connection, port 1	PK-3
Pneumatic connection, port 2	PK-3
Adjustment component	Knurled screw
Type of mounting	With through-hole
Mounting position	optional

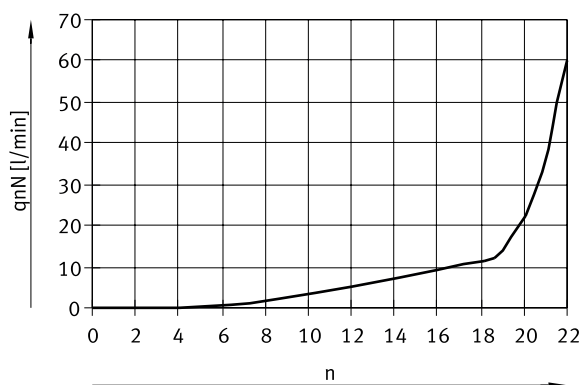
Operating and environmental conditions

Operating pressure	0.5 ... 8 bar
Operating medium	Compressed air to ISO 8573-1:2010 [7:-:]
Note on operating and pilot medium	Lubricated operation possible (in which case lubricated operation will always be required)
Ambient temperature	-10 ... 60°C
Media temperature	-10 ... 60°C

Materials

Material housing	Wrought aluminium alloy
Material adjusting screw	Brass
LABS (PWIS) conformity	VDMA24364-B1/B2-L

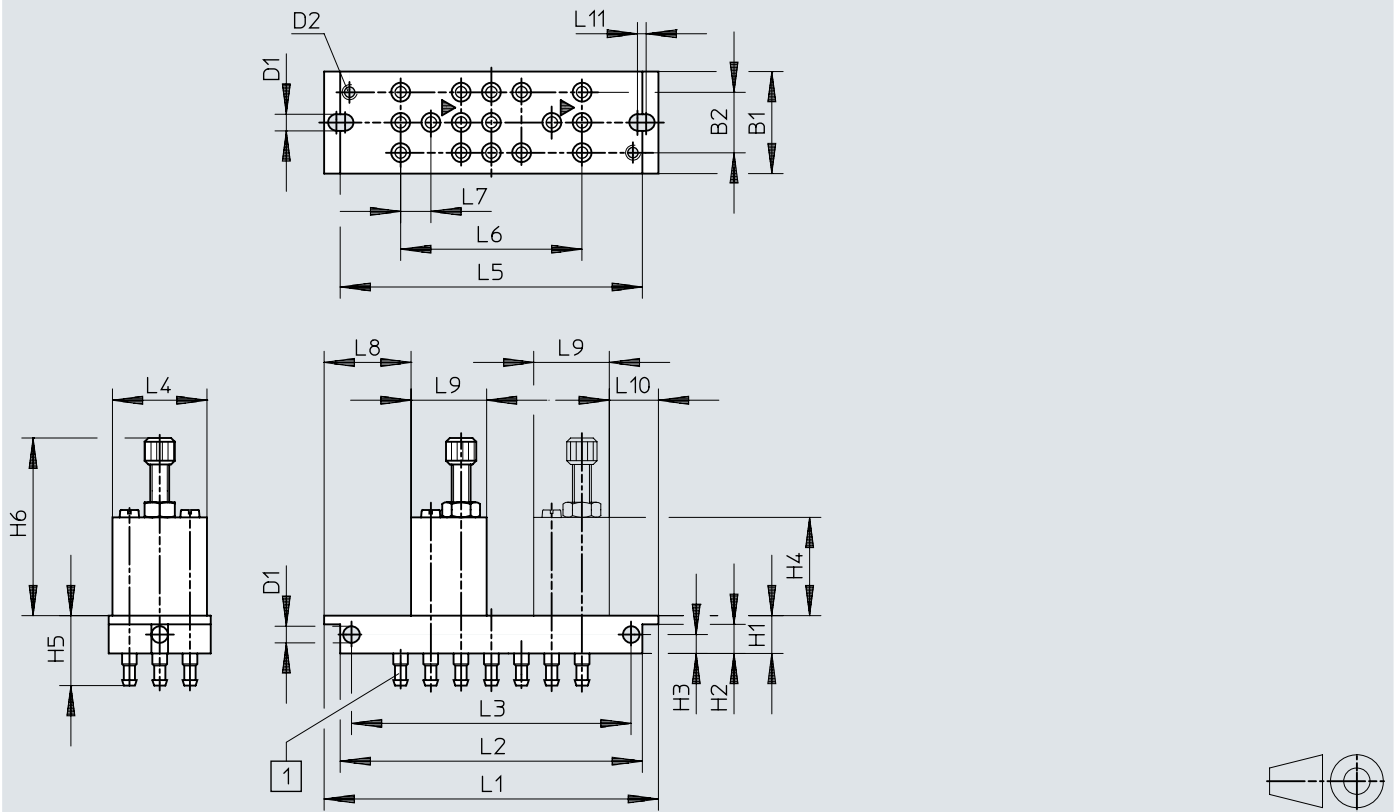
Standard nominal flow rate q_{nN} at 6 → 5 bar as a function of spindle rotations n



Dimensions

Dimensions – One-way flow control valves GRF

Download CAD data www.festo.com



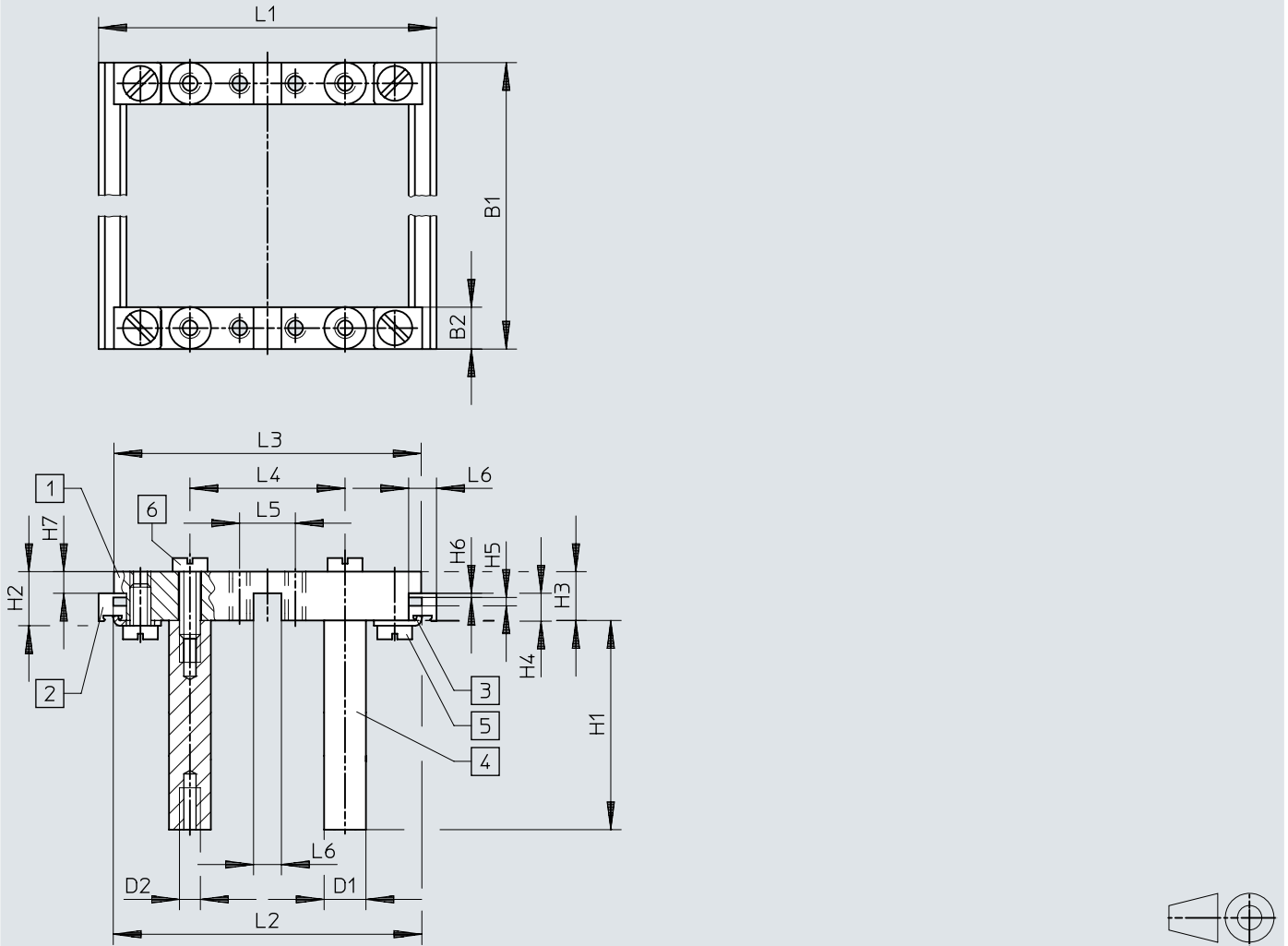
[1] Barbed connector PK-3

	B1	B2	D1 ∅	D2	H1	H2	H3	H4	H5	H6	L1	L2	L3	L4	L5	L6	L7	L8	L9	L10	L11
GRF	27	16	4,4	M4	10	7,7	5	26	18,5	≤ 47	88,5	80,8	74	25	80	48	8	23	20	13	2,3

Dimensions

Dimensions – Mounting frame NRRQ-2N

Download CAD data www.festo.com




- [1] Connecting component NRV-2N
- [2] Profile strip NRQ-8-480
- [3] Mounting bracket NRW-12/3
- [4] Bolt NRB-12/60
- [5] Socket head screw DIN 84-M6X18-4.8
- [6] Socket head screw DIN 84-M6X12-4.8


	B1	B2	D1 ∅	D2	H1	H2	H3	H4	H5	H6	H7	L1	L2	L3	L4	L5	L6
NRRQ	480	12	12	M6	60	15,5	14	8	2,4	1,2	6,2	97	88,6	88,2	44,5	16	8

Ordering data

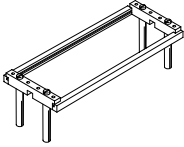
Ordering data (with 1 one-way flow control valve)


	Pneumatic connection, port 1	Pneumatic connection, port 2	Product weight	Part no.	Type
	PK-3	PK-3	95 g	4565	GRF-PK-3


Ordering data (with 2 one-way flow control valves)

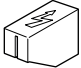
	Pneumatic connection, port 1	Pneumatic connection, port 2	Product weight	Part no.	Type
	PK-3	PK-3	145 g	4566	GRF-PK-3X2

Accessories

Mounting frame NRRQ				
	Short type code	LABS (PWIS) conformity	Part no.	Type
	NRRQ	VDMA24364-B1/B2-L	9364	NRRQ-1N
			9365	NRRQ-2N

Mounting bracket NRW				
	Short type code	LABS (PWIS) conformity	Part no.	Type
	NRW	VDMA24364-B1/B2-L	11571	NRW-9/1,5-B

Socket head screws				
	Based on standard	LABS (PWIS) conformity	Part no.	Type
	DIN 84	VDMA24364-C1-L	208938	DIN 84-M6X12-4.8
			200568	DIN 84-M6X18-4.8

Cover cap SPE-B				
	Short type code		Part no.	Type
	SPE		165614	SPE-B