

Limit switch attachment DAPZ

FESTO



Type code

001	Series
DAPZ	Limit switch attachment

002	Design type
SB	Sensor box

003	Sensor principle
M	Micro switch, antivalent

004	Nominal operating voltage
250AC	250 V AC

005	Type of indicator
D	Switching position indication

006	Housing shape
R	Round

007	Additional features
AR	Foot height adjustable

Datasheet

General technical data		
Based on standard	EN 60947-5-2, VDI/VDE 3845 (NAMUR)	EN 60947-5-1, VDI/VDE 3845 (NAMUR)
Measuring principle	Inductive	Mechanical/electrical
Design	Round	
Mounting position	optional	
Short circuit current rating	Pulsed	no
Switching element function	N/O contact	Changeover switch
Reverse polarity protection	For all electrical connections	no
Switching position indicator	yes	
Switching output	PNP	–
Operational voltage range AC	–	4 ... 250 V
Operational voltage range DC	10 ... 30 V	4 ... 250 V
Internal current consumption, operating voltage	0 ... 100 mA	1 ... 5,000 mA
Insulation voltage	50 V	250 V
Immunity to surge	0.5 kV	2.5 kV
Max. output current	100 mA	5,000 mA
Min. load current	–	1 mA at 4 V/DC
Electrical connection	Screw terminal	
Permissible cable diameter	7 ... 13 mm	
Cable fitting	M20x1.5	

Operating and environmental conditions		
Based on standard	EN 60947-5-2, VDI/VDE 3845 (NAMUR)	EN 60947-5-1, VDI/VDE 3845 (NAMUR)
Ambient temperature	-20, 70	
Degree of protection	IP67	
CE mark (see declaration of conformity)	–	To EU Low Voltage Directive
CE marking (see declaration of conformity)	–	To UK regulations for electrical equipment
Pollution degree	3	
LABS (PWIS) conformity	VDMA24364-B1/B2-L	VDMA24364-B2-L
Corrosion resistance class CRC ¹⁾	2 - Moderate corrosion stress	

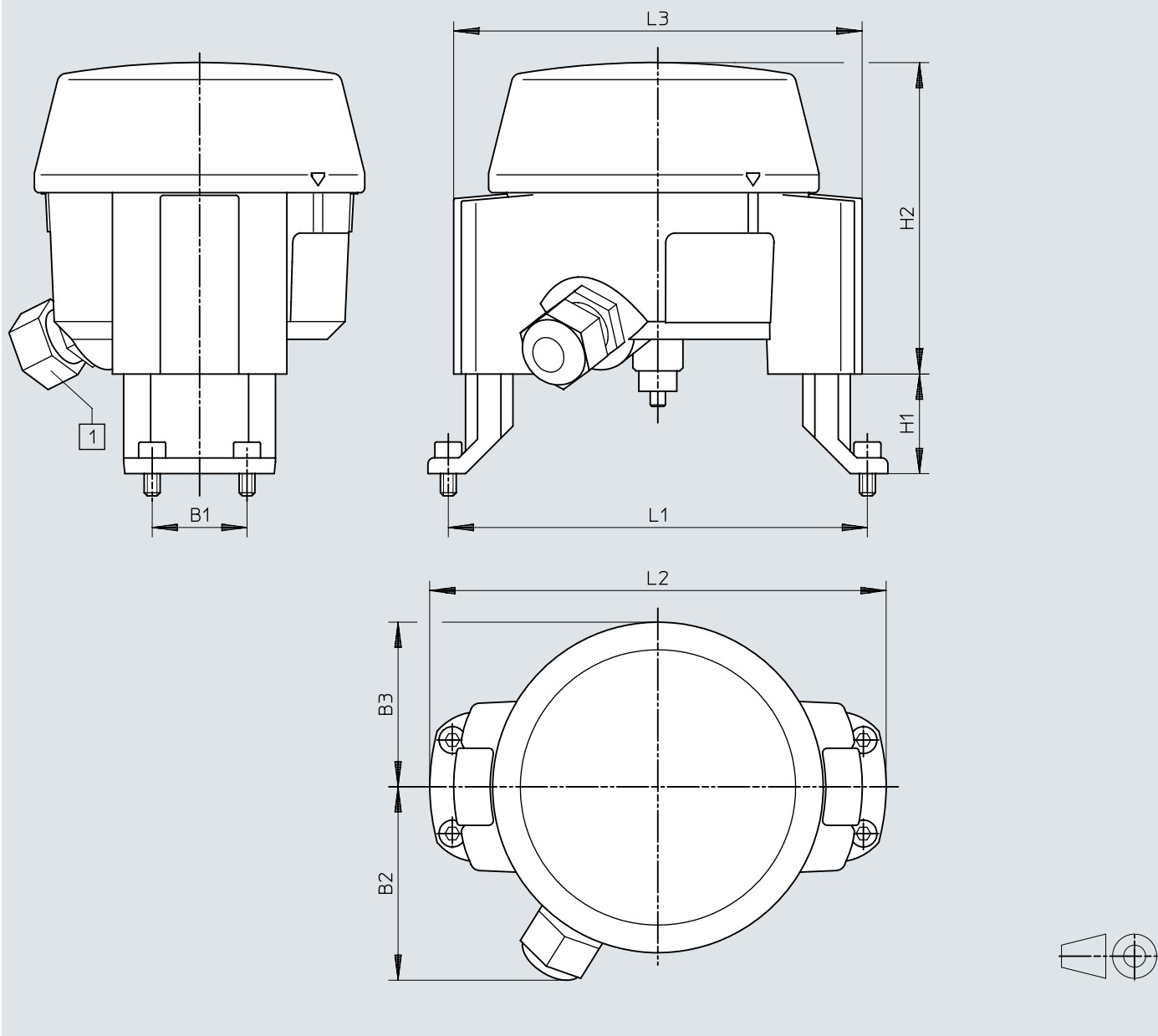
¹⁾ Corrosion resistance class CRC 2 to Festo standard FN 940070 Moderate corrosion stress. Indoor application where condensation can occur. External visible parts with primarily decorative surface requirements that are in direct contact with a normal industrial environment.

Materials	
Material housing socket	ABS+PC
Material housing cover	PC
Material seals	NBR
Note on materials	RoHS-compliant

Dimensions

Dimensions – Limit switch attachments DAPZ


Download CAD data www.festo.com



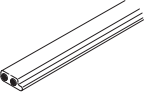
		B1	B2	B3	H1	H2	L1	L2	L3
DAPZ-SB-...-AR	1)	30	62	52,5	20, 30, 50	100	80	66	130
DAPZ-SB-...-AR	2)	30	62	52,5	20, 30, 50	100	130	144	130

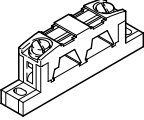
- 1) Mounting the feet inwards
- 2) Mounting the feet outwards

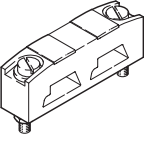
Ordering data

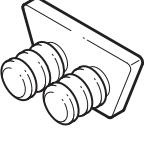
Ordering data			
	Measuring principle	Part no.	Type
	Inductive	534475	DAPZ-SB-I-30DC-DR-AR
	Mechanical/electrical	534474	DAPZ-SB-M-250AC-DR-AR

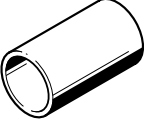
Accessories

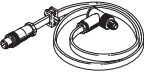
Flat cable for AS-Interface components			
	Cable length	Part no.	Type
	100 m	18940	KASI-1,5-Y-100

Cable distributor for flat cable, rotating cable			
	Product weight	Part no.	Type
	7.2 g	18786	ASI-KVT-FK

Cable distributor for flat cable, cable symmetrical			
	Product weight	Part no.	Type
	7.2 g	18797	ASI-KVT-FK-S

Cable cap for flat cable		
	Part no.	Type
	18787	ASI-KK-FK

Cable sleeve		
	Part no.	Type
	165593	ASI-KT-FK

Addressing cable for addressing unit		
	Part no.	Type
	18960	KASI-ADR