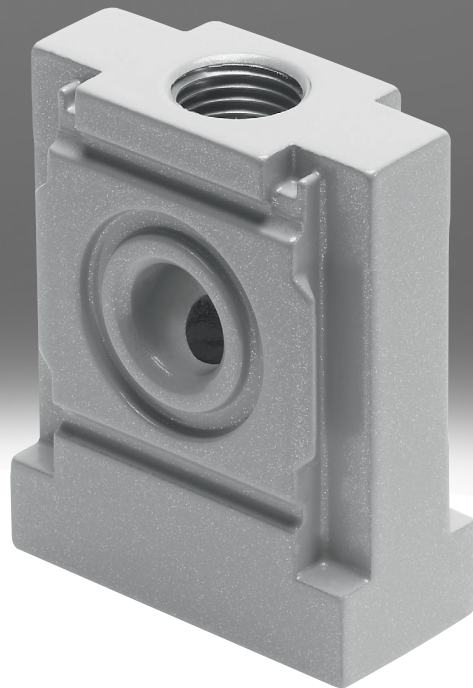


Distributor block MS4-FRM-FRZ

FESTO



Characteristics

At a glance

- Grid dimension: 40 mm
- Outlet at top and bottom
- Can be used as an intermediate distributor for varying air qualities
- Can be used as an adapter between two pressure regulators with pressure gauge with large rotary knob for size MS4

Product segmentation



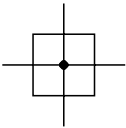
Festo Core Range

Solves the majority of your automation tasks

With the Festo Core Range, we have selected the most important products and functions from our broad product catalogue, and added the quickest delivery. the Core Range offers you the best value with the expected high Festo quality.

- Quickest delivery, worldwide – wherever, whenever
- Expected high Festo quality
- Easy and fast to select

Function



Air distributor with 4 connections

Width

Half grid width (20 mm)

Type code

001	Series
MS	MS series

002	Size
4	Grid dimension 40 mm

003	Function
FRM	Branching module

004	Width
FRZ	Half grid width

Datasheet

General technical data

Pneumatic connection, port 3	G1/4
Pneumatic connection, port 4	G1/4
Design	Branching module
Mounting position	optional

Standard nominal flow rate q_n

Standard nominal flow rate in main flow direction 1->2	4,050 l/min
Standard nominal flow rate, outlet upwards	3,250 l/min
Standard nominal flow rate, outlet downwards	2,900 l/min

Operating and environmental conditions

Operating medium	Compressed air to ISO 8573-1:2010 [7:4:4], Inert gases
Note on operating and pilot medium	Lubricated operation possible (in which case lubricated operation will always be required)
Ambient temperature	-10 ... 60°C
Media temperature	-10 ... 60°C
Storage temperature	-10 ... 60°C
Corrosion resistance class CRC ¹⁾	2 - Moderate corrosion stress
Approval	c UL us - Recognized (OL)

1) Corrosion resistance class CRC 2 to Festo standard FN 940070

Moderate corrosion stress. Indoor applications in which condensation can occur. External visible parts with primarily decorative surface requirements that are in direct contact with a normal industrial environment.

Weight

Product weight	60 g
----------------	------

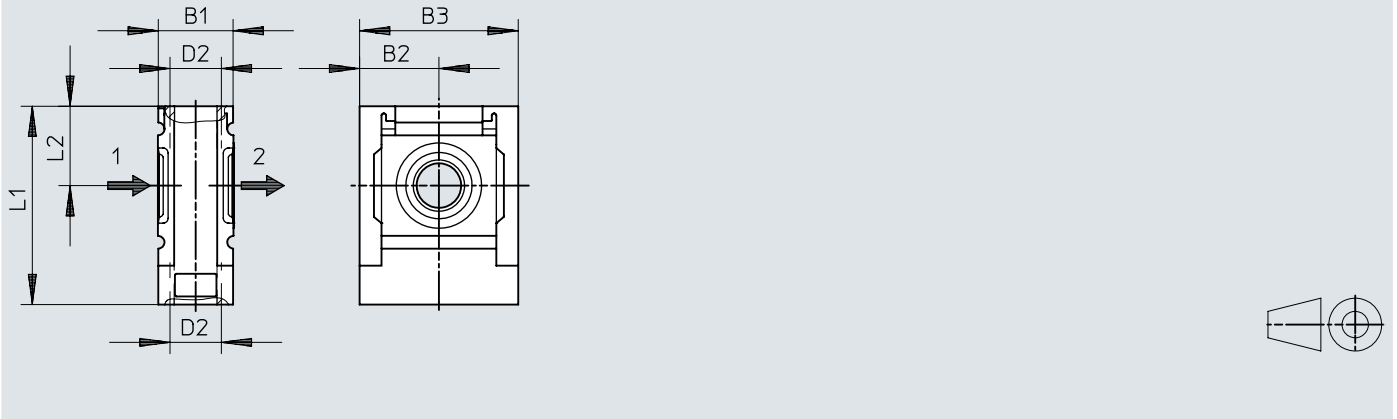
Materials

Material housing	Die-cast aluminium
Note on materials	RoHS-compliant
LABS (PWS) conformity	VDMA24364-B1/B2-L

Dimensions

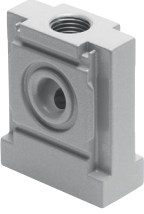
Dimensions – Distributor blocks

Download CAD data → www.festo.com

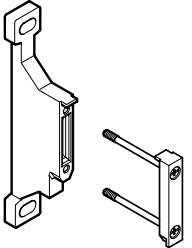


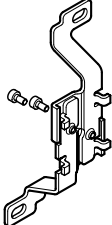
	B1	B2	B3	D2	L1	L2
MS4-FRM-FRZ	20	21	42	G1/4	52,5	21

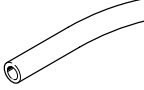
Ordering data


Ordering data			
	Pneumatic connection, port 3	Part no.	Type
	G1/4	★ 549336	MS4-FRM-FRZ

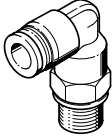
Accessories

Mounting bracket MS4-WP			
	Size	Part no.	Type
	4	★ 532184	MS4-WP

Mounting bracket MS4-WB			
	Size	Part no.	Type
	4	★ 532185	MS4-WB

Tubing PUN-H			
	Colour	Part no.	Type
	Blue	★ 197386	PUN-H-10X1,5-BL
	Natural	★ 197379	PUN-H-10X1,5-NT
	Black	★ 197393	PUN-H-10X1,5-SW
	Translucent blue	★ 8048701	PUN-H-10X1,5-TBL

Push-in fittings QS			
	Nominal size	Part no.	Type
	7.3 mm	★ 186112	QS-G1/4-10-I
	8.5 mm	★ 186101	QS-G1/4-10

Push-in L-fittings QSL			
	Nominal size	Part no.	Type
	8 mm	★ 186122	QSL-G1/4-10