

Indicator insert MCL, MCLZ, MFL, MFLZ

FESTO



Type code

001	Series
M	Indicator insert

002	Electrical connection
C	Type A, plug, to DIN EN 175301-803
F	Type B, as per industry standard (11 mm)

003	Function
L	Indicator insert

004	Additional function
	None
Z	Protective circuit

005	Operating voltage
	24 V DC/AC with protective circuit
24DC/AC	24 V DC/AC
230AC	230 V AC

Datasheet

General technical data

Electrical connection	Type A, Type B, Plugs, To DIN EN 175301-803, To industry standard (11 mm)
-----------------------	---

Technical data – Electrical

Nominal operating voltage AC	24 V	230 V
Nominal operating voltage DC	24 V	–
Permissible voltage fluctuations	+/- 15%	-20% / +15%
Mains frequency	0 ... 60 Hz	50 ... 60 Hz

Materials

Material housing	PA6 reinforced
LABS (PWIS) conformity	VDMA24364-B2-L

Operating and environmental conditions

Nominal operating voltage AC	24 V	230 V
Ambient temperature	-20 ... 60°C	
CE mark (see declaration of conformity) ¹⁾	–	To EU Low Voltage Directive
CE marking (see declaration of conformity) ²⁾	–	To UK regulations for electrical equipment
Degree of protection	IP65, To IEC 60529	

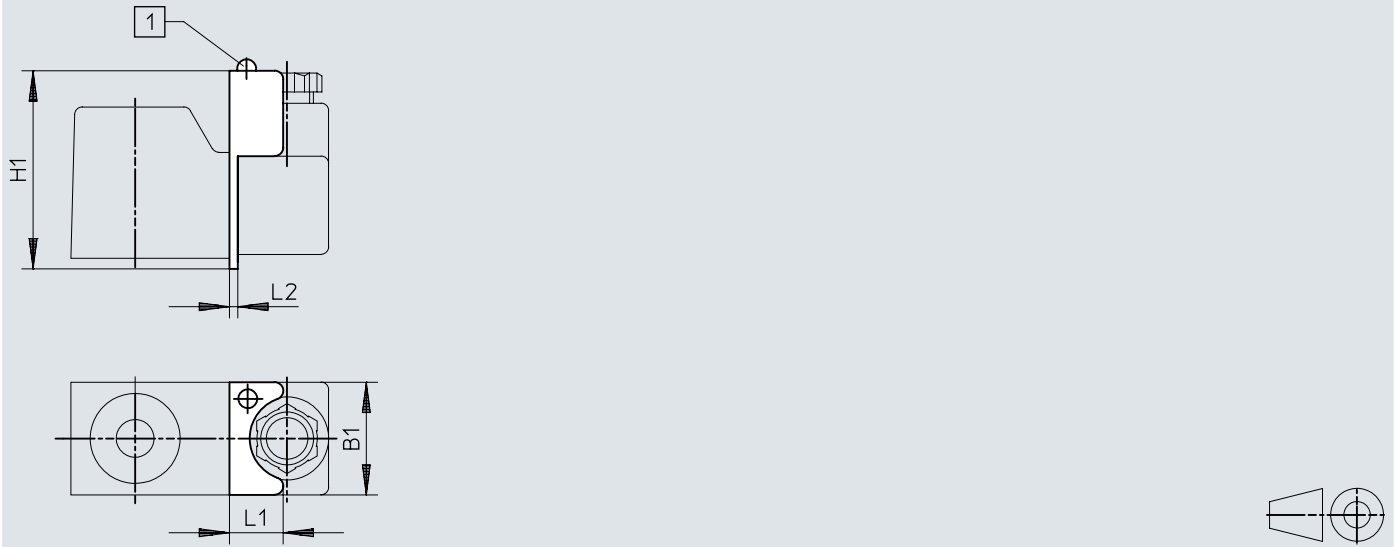
1) More information www.festo.com/catalogue/... Support/Downloads.

2) More information www.festo.com/catalogue/... Support/Downloads.

Dimensions

Dimensions – Electrical connection type A

Download CAD data → www.festo.com

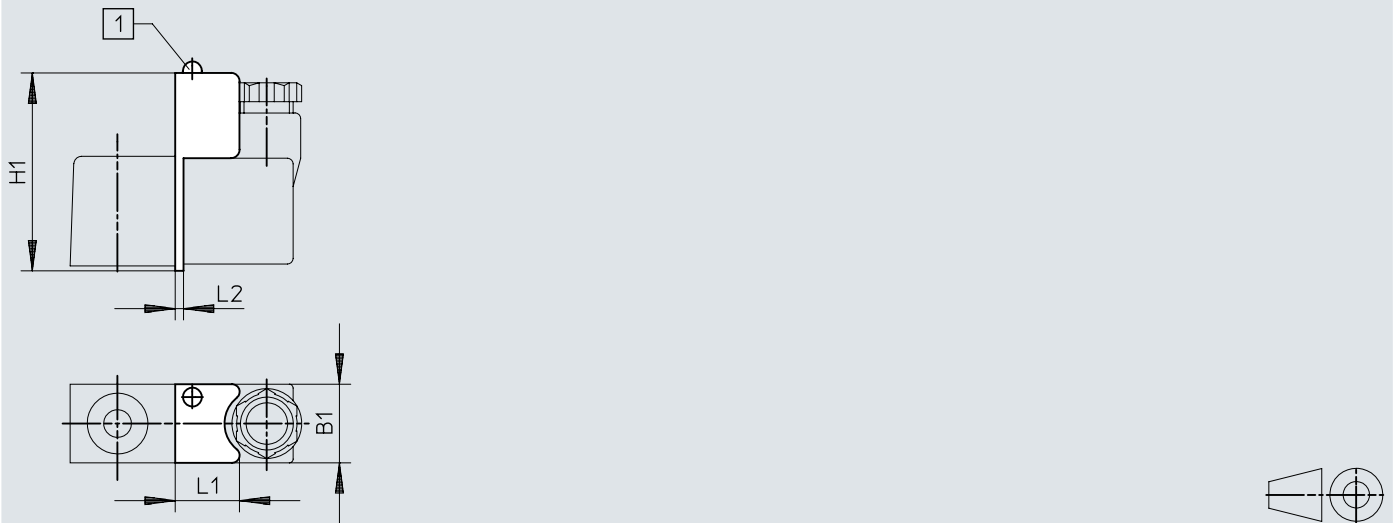


[1] LED

	B1	H1	L1	L2
MCL-24DC/AC	29,8	52,7	14,2	2,2
MCL	29,8	52,7	14,2	2,2
MCL-230AC	29,8	52,7	14,2	2,2

Dimensions


Dimensions – Electrical connection type B

Download CAD data → www.festo.com

[1] LED

	B1	H1	L1	L2
MFL-24DC/AC	20,8	51,4	17	1,7
MFLZ-24DC/AC	20,8	51,4	17	1,7
MFL-230AC	20,8	51,4	17	1,7

Ordering data

Ordering data					
	Electrical connection	Nominal operating voltage AC	Product weight	Part no.	Type
	Type A, Plugs, To DIN EN 175301-803	24 V	12 g	10000	MCL-24DC/AC
	Type B, To industry standard (11 mm)		14 g	12610	MFLZ-24DC/AC
		15 g	10004	MFL-24DC/AC	
	Type A, Plugs, To DIN EN 175301-803	230 V	14 g	10005	MFL-230AC
		24 V	13 g	12611	MCL
		230 V	12 g	10001	MCL-230AC