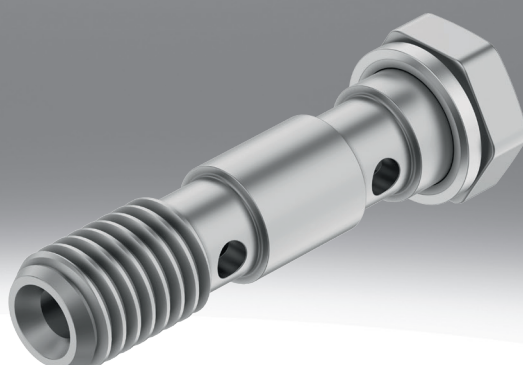


Ring piece and hollow bolt LK, TK, VT

FESTO



Characteristics

At a glance

Ring piece and hollow bolt LK, TK, VT

- Multiple distributor consisting of hollow bolt VT and ring piece LK or TK
- With two to six outlets and one common air feed
- Operating medium: compressed air, vacuum
- Hollow bolt material: Chromated steel;

Datasheet

| General technical data | | | |
|---------------------------------------|---|--|---|
| Short type code | LK | TK | VT |
| Pneumatic connection, port 1 | Male thread M5 Male thread G1/8 Male thread G1/4 Male thread G3/8 G1/8 G1/4 G3/8 | Male thread G1/8 Male thread G1/4 | Male thread M5 Male thread G1/8 Male thread G1/4 Male thread G3/8 |
| Pneumatic connection, port 2 | Female thread G1/8 Female thread G1/4 Female thread G3/8 For barbed fitting I.D. 3 mm with nut For barbed fitting inside diameter of 4 mm with nut For barbed fitting inside diameter of 6 mm with nut | For barbed fitting inside diameter of 4 mm with nut For barbed fitting inside diameter of 6 mm with nut | Female thread G1/8 For barbed fitting I.D. 3 mm with nut For barbed fitting inside diameter of 4 mm with nut For barbed fitting inside diameter of 6 mm with nut |
| Maritime classification ¹⁾ | See certificate | | – |

1) More information [www.festo.com/catalogue/LK or .../TK](http://www.festo.com/catalogue/LK%20or%20TK) → Support/Downloads.

| Operating and environmental conditions | | | |
|---|-----------------|--|----|
| Short type code | LK | TK | VT |
| Operating pressure complete temperature range | 0 ... 10 bar | | – |
| Operating medium | – | Compressed air to ISO 8573-1:2010 [7:::] | – |
| Note on operating and pilot medium | – | Lubricated operation possible (in which case lubricated operation will always be required) | – |
| Maritime classification ¹⁾ | See certificate | | – |

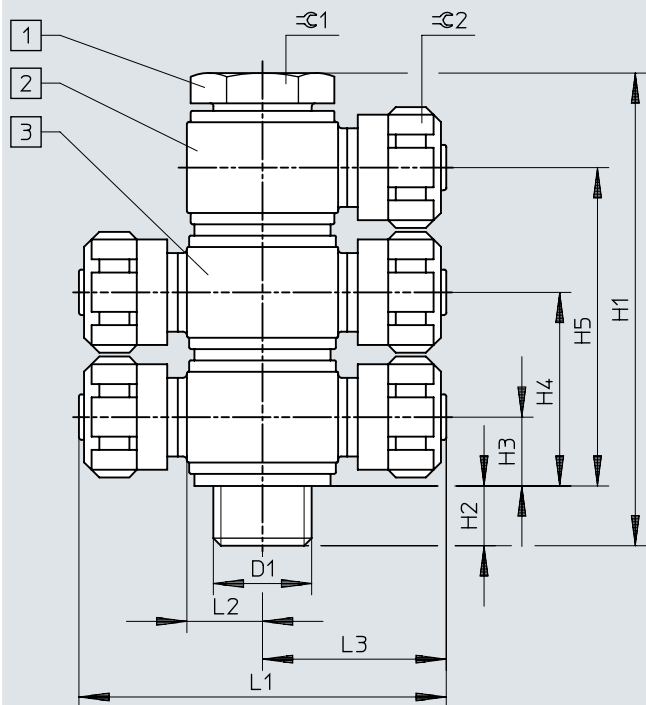
1) More information [www.festo.com/catalogue/LK or .../TK](http://www.festo.com/catalogue/LK%20or%20TK) → Support/Downloads.

| Material specifications | | | |
|-------------------------|-------------------|----|----------------|
| Short type code | LK | TK | VT |
| Material hollow bolt | – | | Steel, chromed |
| Note on materials | RoHS-compliant | | |
| LABS (PWIS) conformity | VDMA24364-B1/B2-L | | VDMA24364-C1-L |

Dimensions

Dimensions – Multiple distributor

Download CAD data www.festo.com




- [1] Hollow bolt VT
- [2] Ring piece LK
- [3] Ring piece TK

Dimensions


| | | D1 | H1 | H2 | H3 | H4 | H5 | L1 | L2 | L3 | ⌀G1 | ⌀G2 | |
|---------------|-------------|------|------|------|------|------|------|------|------|------|-----|-----|----|
| VT-M5-2 | LK-M5-PK-3 | M5 | 27,3 | 4 | 5,2 | 15,1 | - | - | 5 | 16,1 | 7 | 8 | |
| | 32,2 | | | | | | | - | | | | | |
| VT-M5-3 | LK-M5-PK-3 | | 37,1 | 3,9 | 5,2 | 15,1 | 25 | - | 5 | 16,1 | 7 | 8 | |
| | 32,2 | | | | | | | - | | | | | |
| VT-1/8-2-PK-3 | LK-1/8-PK-3 | G1/8 | 32,7 | 5,9 | 6,1 | 16,7 | - | - | 8 | 19,1 | 13 | 8 | |
| | TK-1/8-PK-3 | | | | | | | 38,2 | - | | | | |
| VT-1/8-3-PK-3 | LK-1/8-PK-3 | | 43,3 | 5,9 | 6,1 | 16,7 | 27,3 | - | 8 | 19,1 | 13 | 8 | |
| | TK-1/8-PK-3 | | | | | | | 38,2 | - | | | | |
| VT-1/8-2 | LK-1/8-PK-4 | | 44,8 | 6 | 9,1 | 25,7 | - | - | 8 | 22,2 | 13 | 12 | |
| | TK-1/8-PK-4 | | | | | | | 44,4 | - | | | | |
| | LK-1/8-PK-6 | | | | | | | - | 8 | 22,3 | | 14 | |
| | TK-1/8-PK-6 | | | | | | | 44,6 | - | | | | |
| VT-1/8-3 | LK-1/8-PK-4 | 61,2 | 5,8 | 9,1 | 25,7 | 42,3 | - | 8 | 22,2 | 13 | 12 | | |
| | TK-1/8-PK-4 | | | | | | 44,4 | - | | | | | |
| | LK-1/8-PK-6 | | | | | | - | 8 | 22,3 | | 14 | | |
| | TK-1/8-PK-6 | | | | | | 44,6 | - | | | | | |
| VT-1/4-2 | LK-1/4-PK-4 | G1/4 | 45,2 | 6,6 | 9,2 | 25,4 | - | - | 10 | 24,2 | 17 | 12 | |
| | TK-1/4-PK-4 | | | 48,4 | - | | | | | | | | |
| | LK-1/4-PK-6 | | 6,2 | 9,3 | 25,7 | - | 10 | 24,3 | 14 | | | | |
| | TK-1/4-PK-6 | | 48,6 | - | | | | | | | | | |
| VT-1/4-3 | LK-1/4-PK-4 | | 62,5 | 6,7 | 9,2 | 25,4 | 41,6 | - | 10 | 24,2 | 17 | 12 | |
| | TK-1/4-PK-4 | | | | | | | 48,4 | - | | | | |
| | LK-1/4-PK-6 | | | 6,1 | 9,3 | 25,7 | 42,1 | - | 10 | 24,3 | | 14 | |
| | TK-1/4-PK-6 | | | 48,6 | - | | | | | | | | |
| VT-3/8-2 | LK-3/8-PK-6 | G3/8 | 47,5 | 7,5 | 9,3 | 25,7 | - | - | 12,5 | 26,8 | 22 | 14 | |
| | TK-3/8-PK-6 | | | | | | | 53,6 | - | | | | |
| VT-3/8-3 | LK-3/8-PK-6 | | 63,9 | 7,5 | 9,3 | 25,7 | 42,1 | - | 12,5 | 26,8 | | 22 | 14 |
| | TK-3/8-PK-6 | | | | | | | 53,6 | - | | | | |

Ordering data

Ordering data – hollow bolt VT

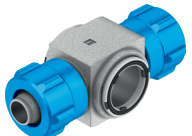
| | Pneumatic connection, port 1 | Pneumatic connection, port 2 | Outlets | Part no. | Type |
|--|------------------------------|--|-----------|----------|---------------|
|  | | | 2 outlets | 9179 | VT-3/8-2-3/8 |
| | | | | 9177 | VT-1/4-2-1/4 |
| | Male thread M5 | For barbed fitting I.D. 3 mm with nut | | 206145 | VT-M5-2 |
| | Male thread G1/8 | | 3 outlets | 4596 | VT-1/8-3 |
| | | | 2 outlets | 4593 | VT-1/8-2-PK-3 |
| | | Female thread G1/8, For barbed fitting inside diameter of 4 mm with nut, For barbed fitting inside diameter of 6 mm with nut | | 206146 | VT-1/8-2 |
| | Male thread G1/4 | | 3 outlets | 2335 | VT-1/4-3 |
| | | | 2 outlets | 206147 | VT-1/4-2 |
| | Male thread G3/8 | | 3 outlets | 2336 | VT-3/8-3 |
| | | | 2 outlets | 206148 | VT-3/8-2 |

Ordering data – ring piece LK

| | Pneumatic connection, port 1 | Pneumatic connection, port 2 | Part no. | Type ¹⁾ | |
|--|------------------------------|---------------------------------------|---|--------------------|----------------|
|  | Male thread M5 | For barbed fitting I.D. 3 mm with nut | 4475 | LK-M5-PK-3 | |
| | Male thread G1/8 | | | 4597 | LK-1/8-PK-3 |
| | | | For barbed fitting inside diameter of 4 mm with nut | 6280 | LK-1/8-PK-4-KU |
| | | | For barbed fitting inside diameter of 6 mm with nut | 4476 | LK-1/8-PK-4 |
| | | | | 4477 | LK-1/8-PK-6 |
| | Male thread G1/4 | | For barbed fitting inside diameter of 4 mm with nut | 6281 | LK-1/8-PK-6-KU |
| | | | | 4478 | LK-1/4-PK-4 |
| | | | For barbed fitting inside diameter of 6 mm with nut | 6282 | LK-1/4-PK-4-KU |
| | Male thread G3/8 | | | 4479 | LK-1/4-PK-6 |
| | | | | 6283 | LK-1/4-PK-6-KU |
| | G1/8 | Female thread G1/8 | 4480 | LK-3/8-PK-6 | |
| G1/4 | Female thread G1/4 | 9181 | LK-1/8 | | |
| G3/8 | Female thread G3/8 | 9173 | LK-1/4 | | |
| | | 9175 | LK-3/8 | | |

1) LK: Die-cast zinc; LK-...-KU: POM

Ordering data – ring piece TK

| | Pneumatic connection, port 1 | Pneumatic connection, port 2 | Part no. | Type ¹⁾ |
|--|------------------------------|---|----------|--------------------|
|  | Male thread G1/8 | For barbed fitting inside diameter of 4 mm with nut | 6284 | TK-1/8-PK-4-KU |
| | | For barbed fitting inside diameter of 6 mm with nut | 6285 | TK-1/8-PK-6-KU |
| | Male thread G1/4 | For barbed fitting inside diameter of 4 mm with nut | 6286 | TK-1/4-PK-4-KU |
| | | For barbed fitting inside diameter of 6 mm with nut | 6287 | TK-1/4-PK-6-KU |

1) TK: Die-cast zinc; TK-...-KU: POM