

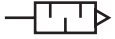
Silencer UC

**FESTO**



## Characteristics

### At a glance



To reduce noise and prevent contamination at the exhaust ports of pneumatic components.

- Polymer version
- For solenoid valves CPE
- Threaded connection or push-in sleeve for push-in fitting QS
- Operating medium: compressed air

Note: Clean silencers with paraffin (not with petrol or trichloroethylene).

## Type code

| 001    | Series               |
|--------|----------------------|
| UC     | Silencer             |
| 002    | Pneumatic connection |
| M5     | M5                   |
| M7     | M7                   |
| 1/8    | G1/8                 |
| 1/4    | G1/4                 |
| 3/8    | G3/8                 |
| QS-4H  | Push-in sleeve 4 mm  |
| QS-6H  | Push-in sleeve 6 mm  |
| QS-10H | Push-in sleeve 10 mm |
| QS-3H  | Push-in sleeve 3 mm  |
| QS-8H  | Push-in sleeve 8 mm  |

| 003 | Packaging quantity [pieces] |
|-----|-----------------------------|
|     | 1                           |
| 20  | 20                          |
| 50  | 50                          |

## Datasheet

### General technical data – Version with push-in sleeve

|                                       |           |           |           |             |             |
|---------------------------------------|-----------|-----------|-----------|-------------|-------------|
| Pneumatic connection                  | QS-3      | QS-4      | QS-6      | QS-8        | QS-10       |
| Mounting position                     | optional  |           |           |             |             |
| Sound pressure level <sup>1)</sup>    | 60 dB(A)  |           |           |             | 68 dB(A)    |
| Flow rate to atmosphere <sup>2)</sup> | 170 l/min | 350 l/min | 800 l/min | 1,500 l/min | 3,100 l/min |

1) Measured at 6 bar against atmosphere at 1 m distance

2) Measured at p1 = 6 bar

### General technical data – Version with threaded connection

|                                       |           |           |             |             |             |
|---------------------------------------|-----------|-----------|-------------|-------------|-------------|
| Pneumatic connection                  | M5        | M7        | G1/8        | G1/4        | G3/8        |
| Mounting position                     | optional  |           |             |             |             |
| Sound pressure level <sup>1)</sup>    | 60 dB(A)  | 58 dB(A)  | 59 dB(A)    | 60 dB(A)    |             |
| Flow rate to atmosphere <sup>2)</sup> | 350 l/min | 800 l/min | 1,700 l/min | 3,200 l/min | 5,000 l/min |

1) Measured at 6 bar against atmosphere at 1 m distance

2) Measured at p1 = 6 bar

### Operating and environmental conditions

|                                    |  |
|------------------------------------|--|
| Operating pressure                 | 0 ... 1 MPa                              |
| Operating pressure                 | 0 ... 10 bar                             |
| Operating pressure                 | 0 ... 145 psi                            |
| Operating medium                   | Compressed air to ISO 8573-1:2010 [7::-] |
| Note on operating and pilot medium | Lubricated operation possible            |
| Ambient temperature                | -10 ... 70°C                             |

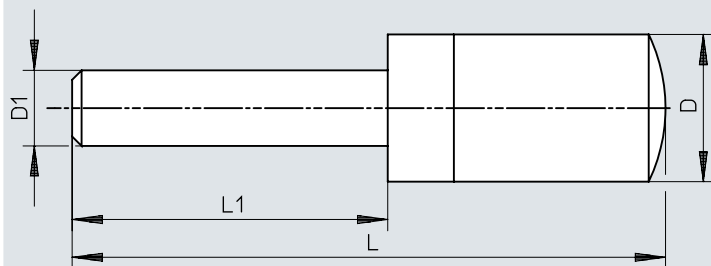
### Materials

|                                      |                   |
|--------------------------------------|-------------------|
| Material screwed plug                | PE                |
| Material shock absorber insert       | PE                |
| Note on materials                    | RoHS-compliant    |
| LABS (PWIS) conformity <sup>1)</sup> | VDMA24364-B1/B2-L |

1) UC...-20/-50: VDMA24364-B2-L

## Dimensions

## Dimensions – Design with push-in sleeve

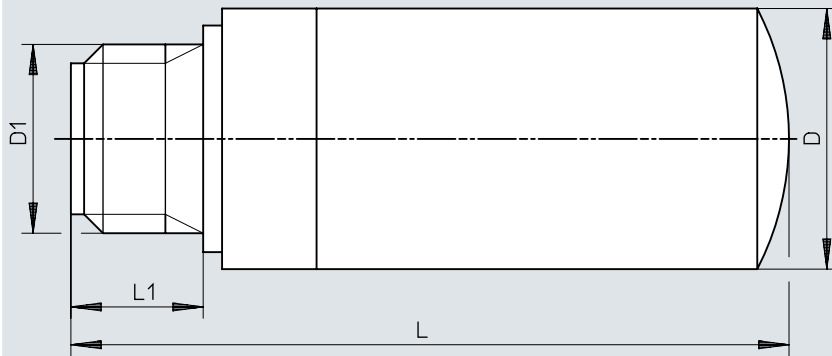
Download CAD data → [www.festo.com](http://www.festo.com)

|           | D1<br>∅ | D<br>∅         | L              | L1        |
|-----------|---------|----------------|----------------|-----------|
| UC-QS-3H  | 3       | 7,8 +0,1/-0,3  | 29,1 ±0,6      | 14,4 ±0,2 |
| UC-QS-4H  | 4       | 7,8 +0,1/-0,3  | 31,0 ±0,6      | 16,3 ±0,2 |
| UC-QS-6H  | 6       | 9,8 -0,4       | 41,3 +1,4      | 17,2      |
| UC-QS-8H  | 8       | 13,8 +0,2/-0,3 | 54,4 +0,5/-1,0 | 23,4      |
| UC-QS-10H | 10      | 17,8 -0,3      | 68,7 +0,2/-0,8 | 26,7      |

## Dimensions

Dimensions – Version with threaded connection


Download CAD data → [www.festo.com](http://www.festo.com)




|           | D1   | D<br>∅         | L              | L1             |
|-----------|------|----------------|----------------|----------------|
| UC-M5     | M5   | 7,8 +0,1/-0,45 | 19,4 +0,6/-0,8 | 4,5 ±0,2       |
| UC-M5-50  |      |                |                |                |
| UC-M7     | M7   | 9,8 -0,5       | 30,7 +0,7/-0,9 | 5,5 +0,15/-0,1 |
| UC-M7-50  |      |                |                |                |
| UC-1/8    | G1/8 | 13,8 +0,2/-0,3 | 38,0 +0,8/-1,0 | 6,5 ±0,1       |
| UC-1/8-50 |      |                |                |                |
| UC-1/4    | G1/4 | 17,8 -0,3      | 50,8 +0,8/-1,0 | 8,5 ±0,15      |
| UC-1/4-20 |      |                |                |                |
| UC-3/8    | G3/8 | 22,1 -0,4      | 69,5 +0,6/-0,8 | 9,5 ±0,1       |
| UC-3/8-20 |      |                |                |                |

## Ordering data

## Ordering data – Version with push-in sleeve

|   | Pneumatic connection | Sound pressure level | Flow rate to atmosphere | Product weight | Part no. | Type      |
|---|----------------------|----------------------|-------------------------|----------------|----------|-----------|
|  | QS-3                 | 60 dB(A)             | 170 l/min               | 0.4 g          | 165005   | UC-QS-3H  |
|   | QS-4                 |                      | 350 l/min               | 0.5 g          | 165006   | UC-QS-4H  |
|   | QS-6                 |                      | 800 l/min               | 1.1 g          | 165007   | UC-QS-6H  |
|   | QS-8                 |                      | 1,500 l/min             | 2.3 g          | 175611   | UC-QS-8H  |
|   | QS-10                | 68 dB(A)             | 3,100 l/min             | 5.5 g          | 526475   | UC-QS-10H |

## Ordering data – Version with threaded connection

|   | Pneumatic connection | Sound pressure level | Flow rate to atmosphere | Product weight | Part no. | Type      |
|---|----------------------|----------------------|-------------------------|----------------|----------|-----------|
|  | M5                   | 60 dB(A)             | 350 l/min               | 0.4 g          | ★ 165003 | UC-M5     |
|   |                      |                      |                         |                | 534217   | UC-M5-50  |
|   | M7                   | 58 dB(A)             | 800 l/min               | 1.2 g          | 534218   | UC-M7-50  |
|   |                      |                      |                         |                | ★ 161418 | UC-M7     |
|   | G1/8                 | 59 dB(A)             | 1,700 l/min             | 2.6 g          | 534219   | UC-1/8-50 |
|   |                      |                      |                         |                | ★ 161419 | UC-1/8    |
|   | G1/4                 | 60 dB(A)             | 3,200 l/min             | 5.2 g          | ★ 165004 | UC-1/4    |
|   |                      |                      |                         |                | 534220   | UC-1/4-20 |
|   | G3/8                 |                      | 5,000 l/min             | 10.5 g         | 576759   | UC-3/8-20 |
|   |                      |                      |                         |                | 1707427  | UC-3/8    |