

Air Logic/Pressure Dependent Valves

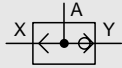
OR Gate, Barbed Fittings for 3 mm Tubing and G 1/8 to G 1/2, 1/8" to 1/4" NPT

OR Gate

Type OS-...

OS-...-NPT

(Shuttle Valve)

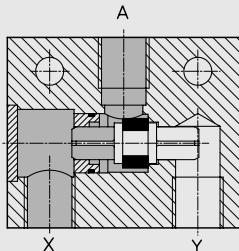


This unit allows two input signals to be combined in an OR function.

OR gates control cylinders or valves from various positions and logic circuits.

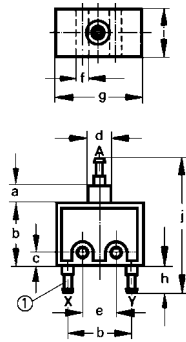
The OR gate has two inputs (X, Y) and one output (A). The valve automatically blocks the non-pressurized inlet. If both inputs are pressurized, the higher pressure is present at outlet A.

Example: Type OS-1/4-B



X, Y = Supply
A = Outlet

Type OS-PK-3

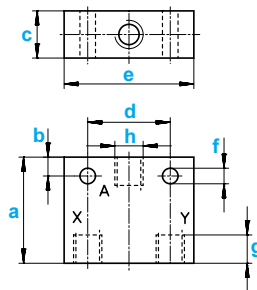


Dimensions

- a 0.20 in / 5 mm
- b 0.75 in / 19 mm
- c 0.16 in / 4 mm
- d 0.28 in / 7 mm
- e 0.39 in / 10 mm
- f 0.13 in / 3.4 mm
- g 1.02 in / 26 mm
- h 0.31 in / 8 mm
- i 0.55 in / 14 mm
- j 1.58 in / 40 mm



Type OS-1/8-B
OS-1/8-NPT

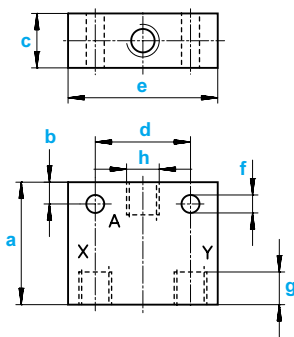


Dimensions

- a 1.26 in / 32 mm
- b 0.12 in / 5 mm
- c 0.63 in / 16 mm
- d 0.95 in / 24 mm
- e 1.57 in / 40 mm
- f 0.18 in / 4.5 mm
- g 0.32 in / 8 mm
- h G 1/8 / 1/8 NPT



Type OS-1/4-B
OS-1/4-NPT



Dimensions

- a 1.70 in / 45 mm
- b 0.32 in / 8 mm
- c 0.79 in / 20 mm
- d 1.38 in / 35 mm
- e 2.17 in / 55 mm
- f 0.26 in / 6.6 mm
- g 0.47 in / 12 mm
- h G 1/4 / 1/4 NPT



① Barbed fitting for 3 mm tubing

Order Number Part No./Type	ISO Connection NPT Connection	6684 OS-PK-3	6681 OS-1/8-B 10412 OS-1/8-NPT	6682 OS-1/4-B 10413 OS-1/4-NPT	3427 OS-1/2
Medium		Compressed air (filtered, lubricated or unlubricated)			
Mounting		Two holes through housing			
Connection		Barbed fitting 3 mm	G 1/8 ISO or 1/8 NPT	G 1/4 ISO or 1/4 NPT	G 1/2 ISO
Orifice Size		0.095 in / 2.4 mm	0.16 in / 4 mm	0.26 in / 6.5 mm	0.47 in / 12 mm
Standard Nominal Flow Rate		0.12 C _V / 120 l/min	0.50 C _V / 500 l/min	1.17 C _V / 1170 l/min	5.0 C _V / 5000 l/min
Pressure Range*		24 to 120 psi / 1.6 to 8 bar	15 to 150 psi / 1 to 10 bar		
Design		OR Gate (shuttle valve)			
Materials		Housing: Plastic, brass Seals: Buna N		Housing: Aluminum, blue anodized; Seals: Buna N	
Weight		0.022 lb / 0.010 kg	0.099 lb / 0.045 kg	0.242 lb / 0.110 kg	1.731 lb / 0.785 kg

* 14 to 140°F / -10 to +60°C

Festo - Your Partner in Automation



1 Festo Inc.
5300 Explorer Drive
Mississauga, ON L4W 5G4
Canada

Festo Customer Interaction Center
Tel: 1 877 463 3786
Fax: 1 877 393 3786
Email: customer.service.ca@festo.com



2 Festo Pneumatic
Av. Ceylán 3,
Col. Tequesquináhuac
54020 Tlalnepantla,
Estado de México

Multinational Contact Center
01 800 337 8669
ventas.mexico@festo.com



3 Festo Corporation
1377 Motor Parkway
Suite 310
Islandia, NY 11749

Festo Customer Interaction Center
1 800 993 3786
1 800 963 3786
customer.service.us@festo.com



4 Regional Service Center
7777 Columbia Road
Mason, OH 45040

Connect with us



www.festo.com/socialmedia



www.festo.com

Subject to change