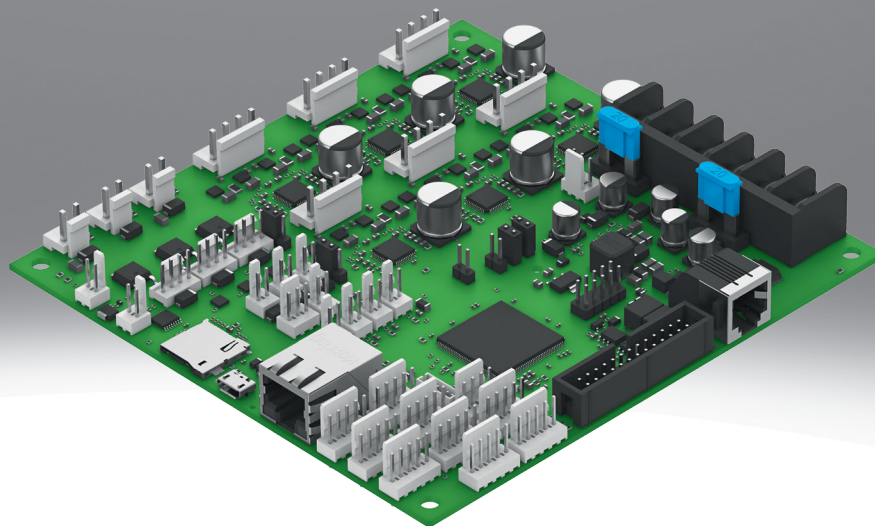


Servo drive CMXL_ST6

FESTO



Characteristics

At a glance

The servo drive CMXL is a 6-axis low voltage servo drive for controlling stepper motors.

- 6 channels for stepper motors up to 4.5 A
- Open loop, no encoder inputs
- Digital inputs for connecting the micro-switches on the three-dimensional gantry EXCL for homing the axes
- Digital Ethernet interface, USB
- Positioning via G-code commands (onboard native G-code interpreter)
- Interpolated operation via multiple channels enables synchronous movement of the axes
- Parameterisation, programming and commissioning in a clear and user-friendly interface possible (Festo Automation Suite)

Type code

| | |
|------|-------------|
| 001 | Series |
| CMXL | Servo drive |

| | |
|-----|------------------|
| 002 | Motor type |
| ST | Stepper motor ST |

| | |
|-----|----------------|
| 003 | Number of axes |
| 6 | 6 |

| | |
|-----|-----------------|
| 004 | Nominal current |
| C4 | 4 A |

| | |
|-----|-----------------------|
| 005 | Nominal input voltage |
| 1 | 24 V DC |

| | |
|-----|-------------------------|
| 006 | Bus protocol/activation |
| MP | Multiprotocol |

Datasheet

General technical data

| | |
|--|---|
| Supported kinematic | 3-axis gantries X-Y-Z |
| Status displays | LED (status) |
| Controller operating mode | Homing, Open-loop operation |
| Control methods | TCP/IP |
| storage medium | microSD |
| Bus connection | Socket |
| USB-interface | USB 2.0 |
| Baud rate | 10/100 Mbps |
| Number of digital logic outputs 24 V DC | 19 |
| Number of digital logic inputs | 9 |
| Features of digital logic out- puts | Configurable, Not galvanically isolated |

Electrical data

| | |
|--|---------------|
| Operational voltage range DC | 20.4 ... 30 V |
| Nominal operating voltage DC | 24 V |
| Permissible range for load power supply | ± 10% |
| Current rating per output | 4,450 mA |
| Nominal voltage for logic pow- er supply DC | 24 V |
| Permissible range for logic voltage | ± 10% |

Operating and environmental conditions

| | |
|--------------------------------|-------------------------|
| Ambient temperature | 10 ... 40°C |
| Storage temperature | -20 ... 60°C |
| Degree of protection | IP00 |
| Corrosion resistance class CRC | 0 - No corrosion stress |
| Product weight | 155 |
| Note on materials | RoHS-compliant |
| LABS (PWIS) conformity | VDMA24364 zone III |

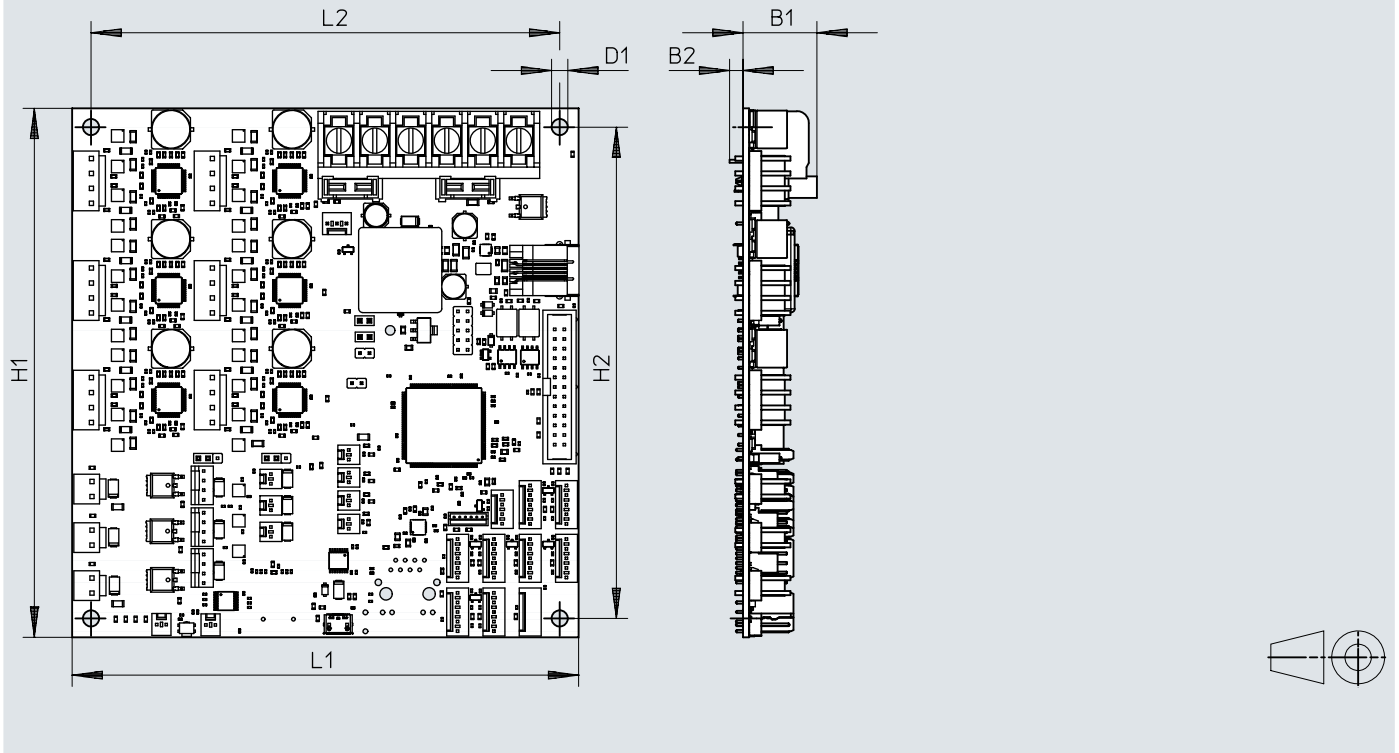
Bus protocol

| | |
|-------------------------------|----------------------------------|
| Fieldbus link | Ethernet |
| Process interfacing | Drives with positioning function |
| Ethernet, supported protocols | TCP/IP |
| Ethernet interface | RJ45 (socket, 8-pin) |

Dimensions

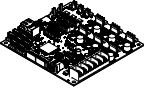
Dimensions – Servo drive CMXL

Download CAD data → www.festo.com



| | B1 | B2 | D1 Ø | H1 | H2 | L1 | L2 |
|---------------------|------|-----|---------|-----|-----|-----|-----|
| CMXL-ST6-NE-C4-1-MP | 19,6 | 3,5 | 4,3 | 140 | 130 | 134 | 124 |

Ordering data

| | Protocol | Part no. | Type |
|--|------------------------|----------------|----------------------------|
|  | HTTP, Ethernet, TCP/IP | 8168593 | CMXL-ST6-NE-C4-1-MP |