

# Classic Tiger Series Power Valves

5/2 - 5 Ported 4 Way, 2 Position Valves, Piloted, G 1/4 or 1/4" NPT

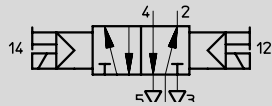
**FESTO**

## Double Solenoid Valve

With Manual Override and Socket

Type JMFH-5-1/4

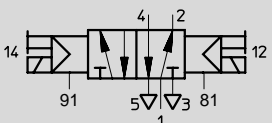
JMFH-5-1/4-NPT



With External Pilot Supply

Type JMFH-5-1/4-S

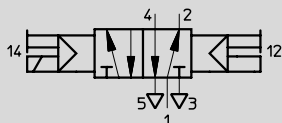
JMFH-5-1/4-S-NPT



## Dominating Double Solenoid Valve

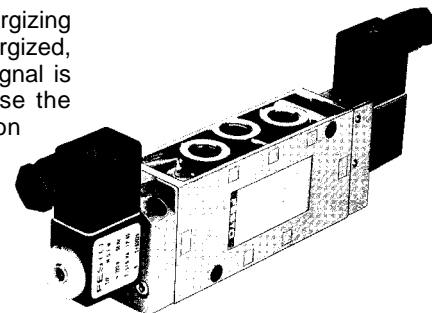
With Manual Override

Type JMFDH-5-1/4



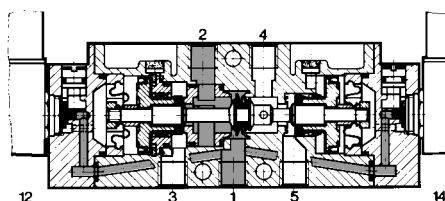
The valve is shifted by alternately energizing the solenoids. When a solenoid is energized, the valve shifts. Only a momentary signal is required (see response time) because the valve will maintain its shifted position until the other solenoid is energized.

If both solenoids are energized, (JMFDH) solenoid 14 will dominate and the valve will shift to the flow position 1 → 4, 2 → 3.



Valve shown with solenoid and socket accessories.

Example: Type JMFH-5-1/4



- 1 (P) = Supply
- 4, 2 (A, B) = Outlet
- 5, 3 (R, S) = Exhaust
- 81, 91 (Pz) = Auxiliary Pilot Air

For manifold mounting,  
Type PAL-..., see page 451.  
Type PRS-..., see page 452.

### Accessories:

(Order Separately)

#### Solenoid F-coils

with socket, see page 455

without socket, see page 456

#### Standard Sockets, Type MSSD-F

see page 459

#### Sockets with cable, Type KMF-...

see page 460

#### LED Gaskets, Type MF-LD-...

see pages 462-463

#### Indicator Inserts, Type MFL-...

see page 464

#### Solenoid Inserts, Type MFZ-...

see page 465

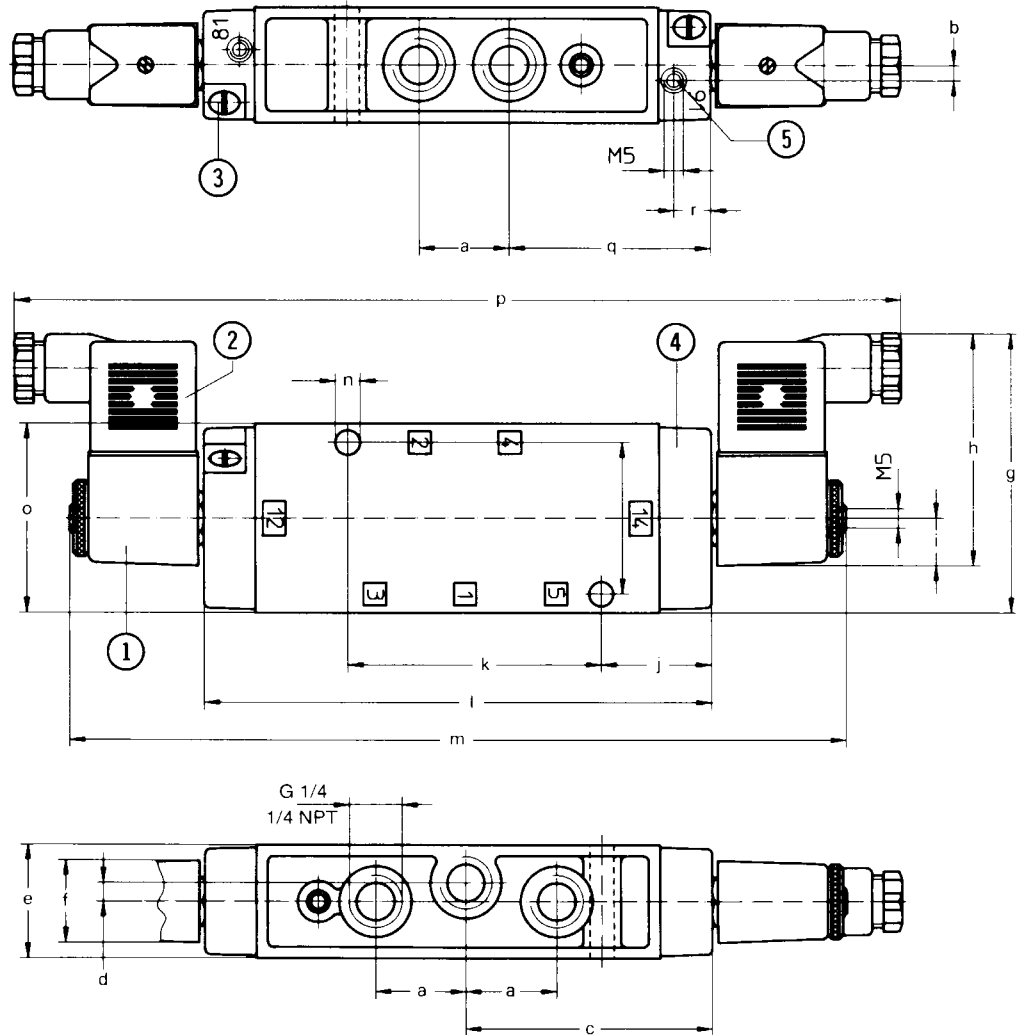
Order Number Part No./Type	10410 JMFH-5-1/4	14009 JMFH-5-1/4-S	10411 JMFDH-5-1/4
	10876 JMFH-5-1/4-NPT	15614 JMFH-5-1/4-S-NPT	—
Medium	Compressed air, filtered (lubricated or unlubricated)		
Design	Poppet valve, piloted		
Mounting	Through-holes in housing		
Connection	G 1/4 ISO / 1/4 NPT		G 1/4 ISO; 81, 91: M5
Orifice Size	0.28 in / 7 mm		
C <sub>v</sub> Factor (P → A)	1.100 C <sub>v</sub> / 1100 l/min		
Operating Pressure Range	22.5 to 120 psi / 1.5 to 8 bar	0 to 120 psi / 0 to 8 bar	37.5 to 120 psi / 2.5 to 8 bar
Pilot Pressure Range	—	18 to 120 psi / 1.2 to 8 bar	—
Response Time at 90 psi / 6 bar	11 ms		11 ms, dominating function 32 ms
Medium Temperature*	14 to 140°F / -10 to +60°C		
Materials	Housing: Diecast aluminum, anodized; Seals: Buna N		
Weight	1.69 lb / 0.530 kg		
Direct Current	Standard Voltage	12, 24V	} For solenoid coils, see pages 455-456.
Alternating Current	Available Voltage	12 to 230V	
	Standard Voltage	24, 42, 110, 230V / 50 to 60 Hz	
Available Voltage	12 to 240V / 50 or 60 Hz		
Power Consumption	DC: 4.5 W; AC: Holding 6 VA, In rush 7.5 VA		
ED Switching Time	100%		
Type of Protection	IP 65 (DIN 40050)		

\*23 to 104°F / -5 to +40°C ambient temperature range

# Classic Tiger Series Power Valves

## Dimensions

Type JMFH-5-1/4,  
 JMFH-5-1/4-NPT  
 JMFH-5-1/4-S,  
 JMFH-5-1/4-S-NPT  
 JMFDH-5-1/4



- ① Solenoid coil can be rotated
- ② Plug can be turned 180°
- ③ Manual override
- ④ Cover can be rotated 180°
- ⑤ Additional auxiliary control air connection with Type JMFH-5-1/4-S

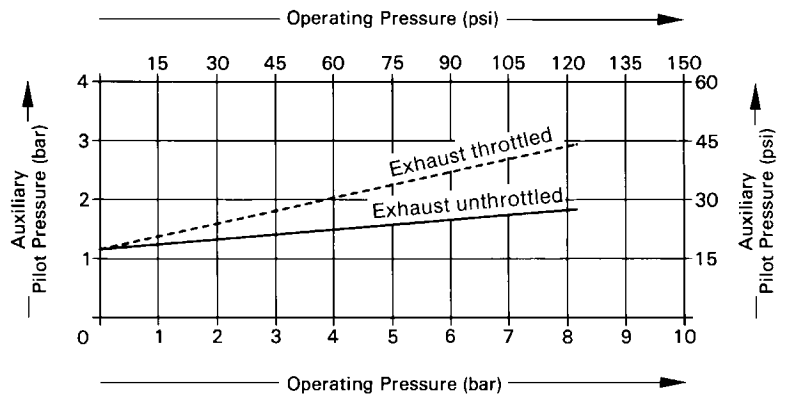
Permissible torque for solenoid mounting nuts =  
 13 lb in / 150 Ncm

- 1 (P) = Supply
- 4, 2 (A, B) = Outlet
- 5, 3 (R, S) = Exhaust
- 81, 91 (Pz) = Auxiliary Pilot Air

### Dimensions

a	0.94 in / 24 mm	j	1.14 in / 29 mm
b	0.16 in / 4 mm	k	2.64 in / 67 mm
c	2.56 in / 65 mm	l	5.28 in / 134 mm
d	0.20 in / 5 mm	m	8.07 in / 205 mm
e	1.20 in / 30.4 mm	n	0.26 in / 6.5 mm
f	0.87 in / 22 mm	o	1.97 in / 50 mm
g	2.89 in / 73.5 mm	p	9.21 in / 234 mm
h	2.40 in / 61 mm	q	2.09 in / 53 mm
i	0.49 in / 12.5 mm	r	0.37 in / 9.5 mm

Minimum pilot pressure as a function of operating pressure, with Type JMFH-5-1/4-S, JMFH-5-1/4-S NPT



### Wear Parts Kit

For Type	JMFH-5-1/4, JMFH-5-1/4-S
Part Number	104892

# Festo - Your Partner in Automation



**1 Festo Inc.**  
5300 Explorer Drive  
Mississauga, ON L4W 5G4  
Canada

**Festo Customer Interaction Center**  
Tel: 1 877 463 3786  
Fax: 1 877 393 3786  
Email: [customer.service.ca@festo.com](mailto:customer.service.ca@festo.com)

**2 Festo Pneumatic**  
Av. Ceylán 3,  
Col. Tequesquináhuac  
54020 Tlalnepantla,  
Estado de México

**Multinational Contact Center**  
01 800 337 8669  
[ventas.mexico@festo.com](mailto:ventas.mexico@festo.com)

**3 Festo Corporation**  
1377 Motor Parkway  
Suite 310  
Islandia, NY 11749

**Festo Customer Interaction Center**  
1 800 993 3786  
1 800 963 3786  
[customer.service.us@festo.com](mailto:customer.service.us@festo.com)

**4 Regional Service Center**  
7777 Columbia Road  
Mason, OH 45040

Connect with us



[www.festo.com/socialmedia](http://www.festo.com/socialmedia)



[www.festo.com](http://www.festo.com)

Subject to change