

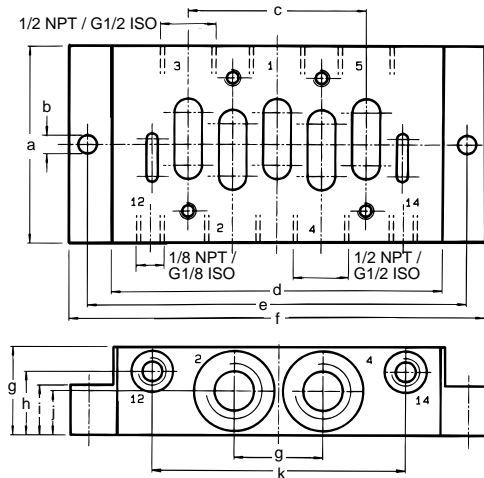
## Single Sub-bases

With Mounting Pattern to ISO 5599/I Table 3, Size 3 and External Dimensions to VDMA 24345.

Single sub-base  
Side ported

Type NAS-1/2-3A-ISO  
NAS-1/2-NPT-3A

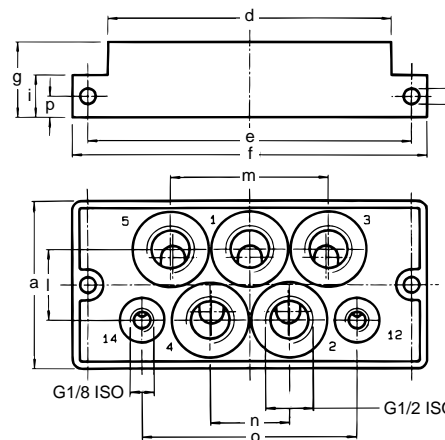
Type NAS-1/2-3A-ISO  
NAS-1/2-NPT-3A



Single sub-base  
Bottom ported

Type NAU-1/2-3B-ISO

Type NAU-1/2-3B-ISO



- 1 (P) = Supply port
- 4, 2 (A, B) = Working or outlet ports
- 5, 3 (R, S) = Exhaust ports
- 12, 14 (Y, Z) = Pilot ports

### Dimensions

- a 2.80 in / 71 mm
- b 0.26 in / 6.6 mm
- c 2.52 in / 64 mm
- d 4.69 in / 119 mm
- e 5.35 in / 136 mm
- f 5.87 in / 149 mm
- g 1.26 in / 32 mm
- h 0.91 in / 23 mm
- i 0.71 in / 18 mm
- j 0.63 in / 16 mm
- k 3.58 in / 91 mm
- l 1.18 in / 30 mm
- m 2.60 in / 66 mm
- n 1.30 in / 33 mm
- o 3.54 in / 90 mm
- p 0.35 in / 9 mm

Order Number	Metric	10336 NAS-1/2-3A-ISO	10337 NAU-1/2-3B-ISO
Part No./Type	NPT	13995 NAS-1/2 NPT-3A	—
Mounting		2 through-holes in housing	
Connection	Working Ports	G 1/2 ISO / 1/2 NPT	G 1/2 ISO
	Pilot Ports	G 1/8 ISO / 1/8 NPT	G 1/8 ISO
Materials		Diecast Al, anodized	
Weight		0.794 lb / 0.360 kg	1.445 lb / 0.660 kg

# Festo - Your Partner in Automation



**1 Festo Inc.**  
5300 Explorer Drive  
Mississauga, ON L4W 5G4  
Canada

**Festo Customer Interaction Center**  
Tel: 1 877 463 3786  
Fax: 1 877 393 3786  
Email: customer.service.ca@festo.com



**2 Festo Pneumatic**  
Av. Ceylán 3,  
Col. Tequesquináhuac  
54020 Tlalnepantla,  
Estado de México

**Multinational Contact Center**  
01 800 337 8669  
ventas.mexico@festo.com



**3 Festo Corporation**  
1377 Motor Parkway  
Suite 310  
Islandia, NY 11749

**Festo Customer Interaction Center**  
1 800 993 3786  
1 800 963 3786  
customer.service.us@festo.com



**4 Regional Service Center**  
7777 Columbia Road  
Mason, OH 45040

Connect with us



[www.festo.com/socialmedia](http://www.festo.com/socialmedia)



[www.festo.com](http://www.festo.com)

Subject to change