

Classic Tiger Series Power Valves

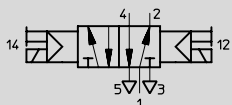
5/2 - 5 Ported 4 Way, 2 Position Valves, Piloted, G 1/8 or 1/8" NPT

FESTO

Double Solenoid Valve

With Manual Override and Socket
Type JMFH-5-1/8

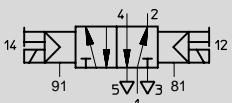
JMFH-5-1/8-NPT



With External Pilot Supply

Type JMFH-5-1/8-S

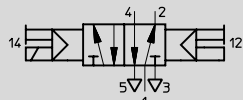
JMFH-5-1/8-S-NPT



Dominating Double Solenoid Valve

With Manual Override

Type JMFDH-5-1/8

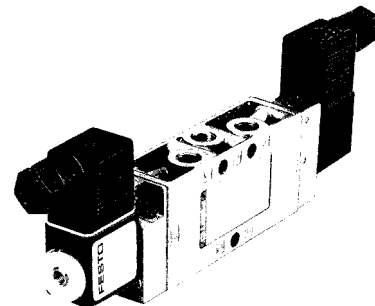


NOTE:

This single solenoid valve can be ordered without socket. See order example in table below.

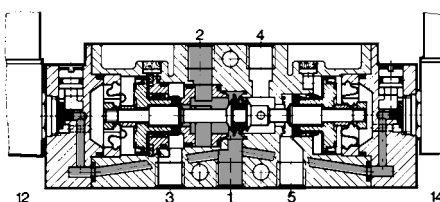
The valve is shifted by alternately energizing the solenoids. When a solenoid is energized, the valve shifts. Only a momentary signal is required (see response time) because the valve will maintain its shifted position until the other solenoid is energized.

If both solenoids are energized, (JMFDH) solenoid 14 will dominate and the valve will shift to the flow position 1 → 4, 2 → 3.



Valve shown with solenoid and socket accessories.

Example: Type JMFH-5-1/8



- 1 (P) = Supply
- 4, 2 (A, B) = Outlet
- 5, 3 (R, S) = Exhaust
- 81, 91 (Pz) = Auxiliary Pilot Air

For manifold mounting,
Type PAL-..., see page 451.
Type PRS-..., see page 452.

Accessories:

(Order Separately)

Solenoid F-coils

with socket, see page 455

without socket, see page 456

Standard Sockets, Type MSSD-F

see page 459

Sockets with cable, Type KMF-...

see page 460

LED Gaskets, Type MF-LD-...

see pages 462-463

Indicator Inserts, Type MFL-...

see page 464

Solenoid Inserts, Type MFZ-...

see page 465

Order Number	8820	14008	8821
Part No./Type	JMFH-5-1/8	JMFH-5-1/8-S	JMFDH-5-1/8
	10875	15613	—
	JMFH-5-1/8-NPT	JMFH-5-1/8-S-NPT	
Design	Poppet valve, piloted		
Medium	Compressed air (filtered, lubricated or unlubricated)		
Mounting	Through-holes in housing		
Connection	G 1/8 ISO / 1/8 NPT		G 1/8 ISO / 1/8 NPT, 81, 91: M5
Orifice Size	0.20 in / 5 mm		
C _v Factor (P → A)	0.6 C _v / 600 l/min		
Operating Pressure Range	22.5 to 120 psi / 1.5 to 8 bar	0 to 120 psi / 0 to 8 bar	37.5 to 120 psi / 2.5 to 8 bar
Pilot Pressure Range	—	17 to 120 psi / 1.2 to 8 bar	
Response Time at 90 psi / 6 bar	10 ms		10 ms, dominating function 24 ms
Medium Temperature Range*	14 to 140°F / -10 to +60°C		
Materials	Housing: Diecast Al, anodized. Seals: Buna N		
Weight	0.937 lb / 0.425 kg		
Direct Current	Standard Voltage	12, 24V	} For solenoid coils, see pages 455-456.
	Available Voltage	12 to 230V	
Alternating Current	Standard Voltage	24, 42, 110, 230V / 50 to 60 Hz	
	Available Voltage	12 to 240V / 50 or 60 Hz	
Power Consumption	DC: 4.5 W; AC: Holding 6 VA, In rush 7.5 VA		
ED Switching Time	100%		
Type of Protection	IP 65 (DIN 40050)		

* 23 to 104°F / -5 to +40°C ambient temperature range

Classic Tiger Series Power Valves

Dimensions

Type JMFH-5-1/8, JMFH-5-1/8 NPT
 JMFH-5-1/8-S, JMFH-5-1/8-S-NPT
 JMFHD-5-1/8

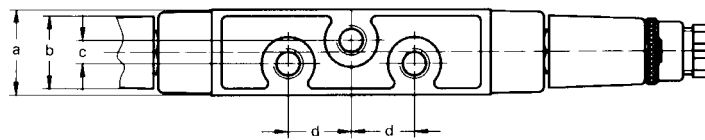
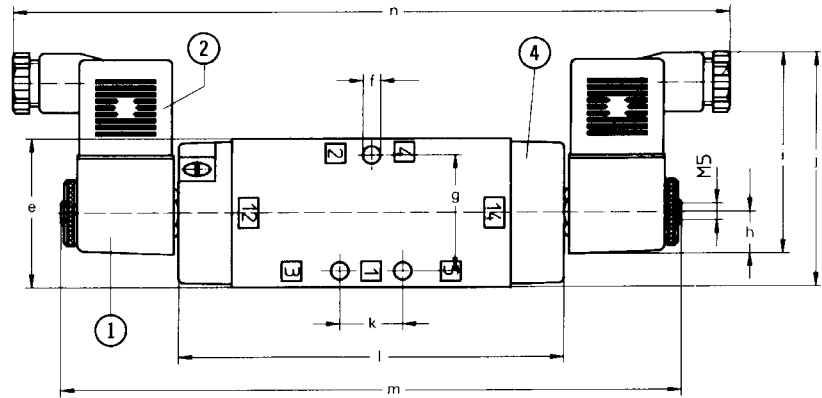
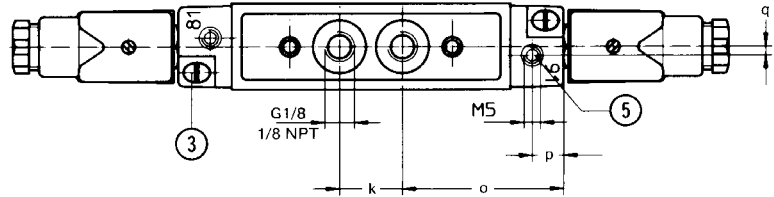
- ① Solenoid coil can be rotated
- ② Plug can be turned 180°
- ③ Manual override
- ④ Cover can be rotated 180°
- ⑤ Additional auxiliary control air connection with Type JMFH-5-1/8-S

Permissible torque for solenoid mounting nuts
 = 13 lb in / 150 Ncm

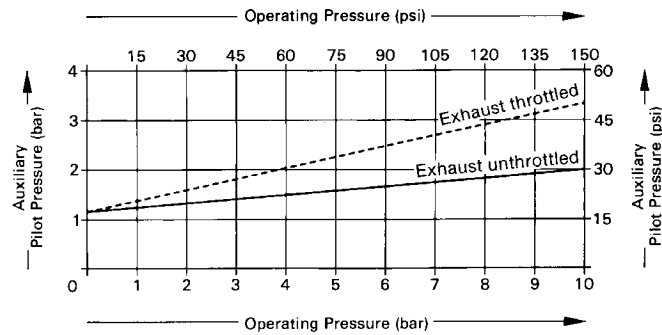
- 1 (P) = Supply
- 4, 2 (A, B) = Outlet
- 5, 3 (R, S) = Exhaust
- 81, 91 (Pz) = Auxiliary Pilot Air

Dimensions

- | | |
|---------------------|---------------------|
| a 1.02 in / 26 mm | j 2.80 in / 71 mm |
| b 0.87 in / 22 mm | k 0.75 in / 19 mm |
| c 0.28 in / 7 mm | l 4.57 in / 116 mm |
| d 0.75 in / 19 mm | m 7.36 in / 187 mm |
| e 1.77 in / 45 mm | n 8.58 in / 218 mm |
| f 0.21 in / 5.3 mm | o 1.91 in / 48.5 mm |
| g 1.38 in / 35 mm | p 0.37 in / 9.5 mm |
| h 0.49 in / 12.5 mm | q 0.11 in / 2.7 mm |
| i 2.40 in / 61 mm | |



Minimum pilot pressure as a function of operating pressure, with Type JMFH-5-1/8-S, JMFH-5-1/8-S-NPT



Wear Parts Kit

For Type	JMFH-5-1/8, JMFH-5-1/8-S
Order Number	104891

Festo - Your Partner in Automation



1 Festo Inc.
5300 Explorer Drive
Mississauga, ON L4W 5G4
Canada

Festo Customer Interaction Center
Tel: 1 877 463 3786
Fax: 1 877 393 3786
Email: customer.service.ca@festo.com



2 Festo Pneumatic
Av. Ceylán 3,
Col. Tequesquináhuac
54020 Tlalnepantla,
Estado de México

Multinational Contact Center
01 800 337 8669
ventas.mexico@festo.com



3 Festo Corporation
1377 Motor Parkway
Suite 310
Islandia, NY 11749

Festo Customer Interaction Center
1 800 993 3786
1 800 963 3786
customer.service.us@festo.com



4 Regional Service Center
7777 Columbia Road
Mason, OH 45040

Connect with us



www.festo.com/socialmedia



www.festo.com

Subject to change