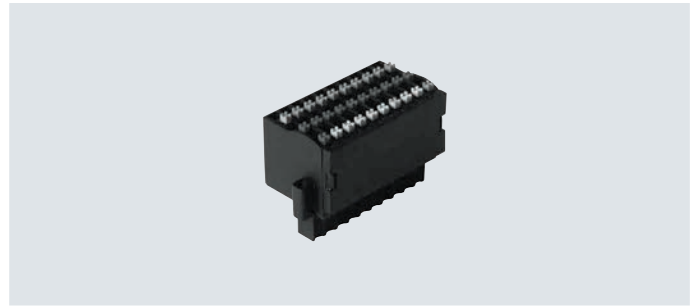


Data sheet

Plug PS1-SAC

- Power supply plug, 30-pin
- Simple cable connection using clamping technology


General technical data

Electrical connection	10-pin socket, 30-pin terminal strip
Operating voltage range [V AC]	Max. 50
Type of mounting	2x M2x7 screws With through-hole
Connection cross section [mm ²]	0.08 ... 0.75

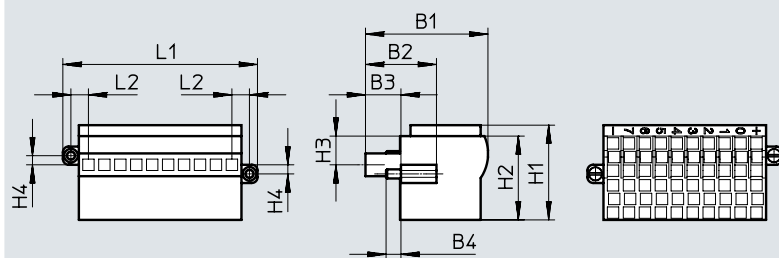
Materials

Housing	PBT
---------	-----

Operating and environmental conditions

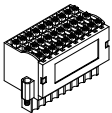
Ambient temperature [°C]	-20 ... +100
--------------------------	--------------

Dimensions

 Download CAD data → www.festo.com


	B1	B2	B3	B4	H1	H2	H3	H4	L1	L2
PS1-SAC31	26.9	15.6	7.6	3.3 ... 3.9	20.8	18.4	6.3	2	42.7	3.9

Ordering data

	Electrical connection	Current rating [A]	Weight [g]	Part no.	Type
	10-pin socket, 30-pin terminal strip	0.5	25	197162	PS1-SAC31-30POL+LED

Festo - Your Partner in Automation



1 Festo Inc.
5300 Explorer Drive
Mississauga, ON L4W 5G4
Canada

Festo Customer Interaction Center
Tel: 1 877 463 3786
Fax: 1 877 393 3786
Email: customer.service.ca@festo.com



2 Festo Pneumatic
Av. Ceylán 3,
Col. Tequesquináhuac
54020 Tlalnepantla,
Estado de México

Multinational Contact Center
01 800 337 8669
ventas.mexico@festo.com



3 Festo Corporation
1377 Motor Parkway
Suite 310
Islandia, NY 11749

Festo Customer Interaction Center
1 800 993 3786
1 800 963 3786
customer.service.us@festo.com



4 Regional Service Center
7777 Columbia Road
Mason, OH 45040

Connect with us



www.festo.com/socialmedia



www.festo.com

Subject to change