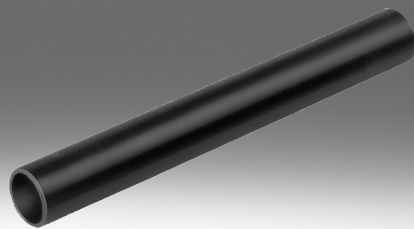


Plastic-coated metal tube PM

**FESTO**



## Characteristics

### At a glance

The PM pipe has the corrosion resistance of plastic and the deformation resistance of metal. It can be bent, straightened and reshaped several times without a pipe-bending device and without being damaged.

- Packaging unit: 50 m
- Can be combined with push-in fitting QS

Note: The plastic-coated metal tube PM is printed with the identification “10 bar at RT”. This specification of the max. operating pressure at room temperature (RT) refers to the use of the pipe in combination with a push-in fitting from Festo. When using a push-in fitting, there must be an unbent piece of pipe of approx. 20 mm in length following the bending radius.

### Diagrams

Further information → [pm](#)



The diagrams shown in this document are also available online. These can be used to display precise values.

## Datasheet

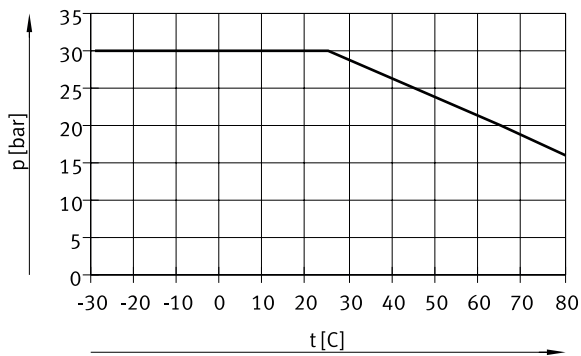
### General technical data

Outside diameter	6 mm	8 mm
Inside diameter	3.92 mm	5.2 mm
Flow-relevant bending radius	19 mm	25 mm

### Operating and environmental conditions

Temperature-dependent operating pressure	-0.95 ... 30 bar
Operating medium	Compressed air to ISO 8573-1:2010 [7::-]
Ambient temperature	-29 ... 65°C


### Operating pressure p as a function of temperature t



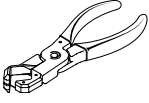
### Materials

Material tubing	Wrought aluminium alloy, PE
Colour	Black
Note on materials	RoHS-compliant
LABS (PWIS) conformity	VDMA24364-B2-L

## Ordering data

Ordering data					
	Outside diameter	Inside diameter	Product weight according to length	Part no.	Type
	6 mm	3.92 mm	0.024 kg/m	<b>9084</b>	<b>PM-4</b>
	8 mm	5.2 mm	0.032 kg/m	<b>9087</b>	<b>PM-6</b>

## Accessories

Pipe and tubing cutter ZRS			
	Short type code	Part no.	Type
	ZRS	7658	ZRS