

Logic component ZK

FESTO



Characteristics

At a glance

Pneumatic AND gate for logical function control.

- AND valve
- Connects two input signals in the AND function
- Product complies with ISO 1179-1 and ISO 228-1

Series

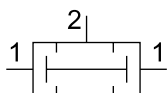
For an AND gate, all input signals must be active at the same time in order to execute a function.

Datasheet

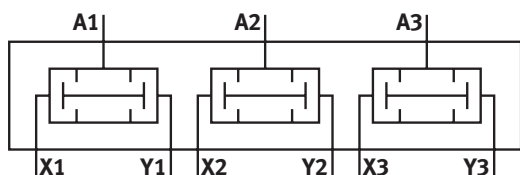
General technical data

Pneumatic connection, port 1	G1/8	PK-3	PK-4
Pneumatic connection, port 2	G1/8	PK-3	PK-4
Nominal size	4.5 mm	2.4 ... 2.5 mm	–
Standard nominal flow rate (standardised to DIN 1343)	550 l/min	100 ... 120 l/min	–
Type of mounting	With through-hole	Front panel mounting, With through-hole	With through-hole
Mounting position	optional		–

Function ZK-1/8-B; ZK-PK-3; ZK-2-R-M5



Function ZK-PK-3-6/3



Operating and environmental conditions

Pneumatic connection, port 1	G1/8	PK-3	PK-4
Operating pressure	1 ... 10 bar	1.6 ... 8 bar	0.001 ... 6 bar
Operating pressure	14.5 ... 145 psi	23.2 ... 116 psi	–
Operating medium	Compressed air to ISO 8573-1:2010 [7:-:-]		–
Note on operating and pilot medium	Lubricated operation possible (in which case lubricated operation will always be required)		–
Ambient temperature	-10 ... 60°C		–
Media temperature	-10 ... 60°C		–

Materials

Pneumatic connection, port 1	G1/8	PK-3	PK-4
Material housing	Wrought aluminium alloy, Anodised	Brass, POM	–
Note on materials	RoHS-compliant		–
LABS (PWIS) conformity	VDMA24364-B1/B2-L		VDMA24364-B2-L

Dimensions

Dimensions – ZK-PK-3, OS-PK-3

Download CAD data www.festo.com



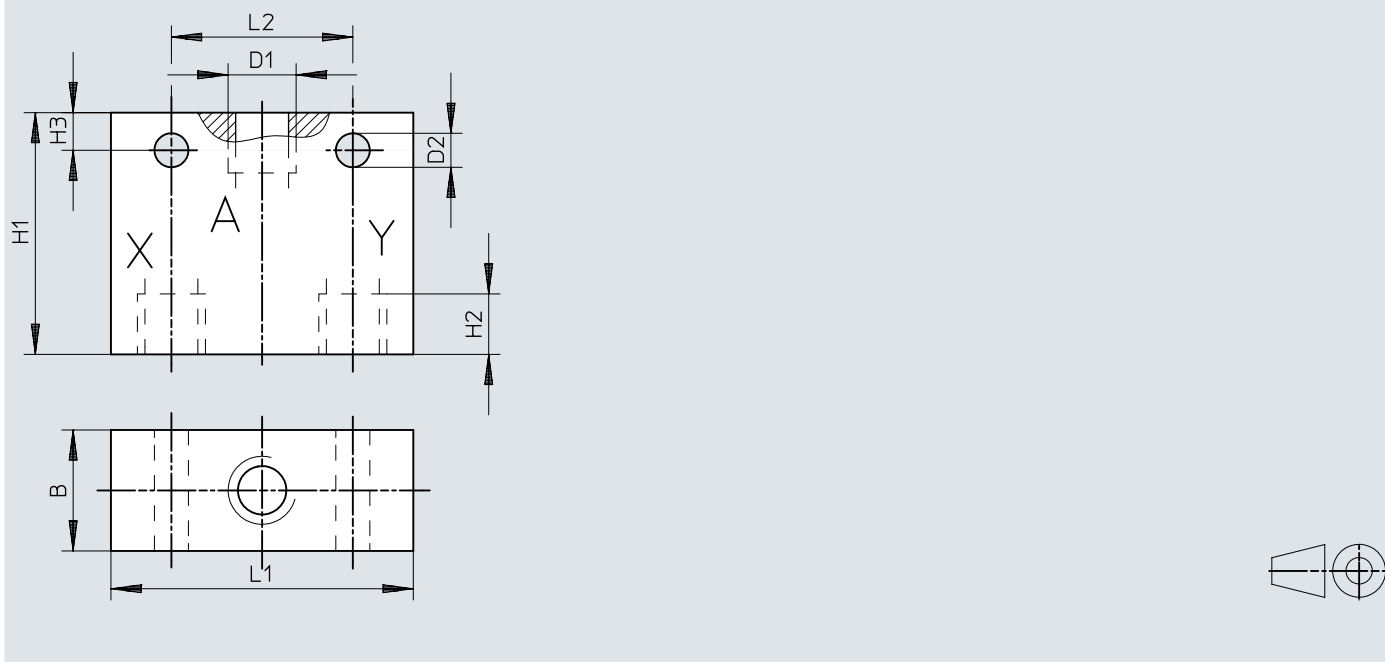
[1] Barbed connector PK-3

	B	D1 ∅	D2 ∅	H1	H2	H3	H4	L1	L2	L3
OS-PK-3	14	7	3,4	40	19	8	5	26	19	10

Dimensions

Dimensions – ZK-1/8-B, OS-1/8-B

Download CAD data www.festo.com

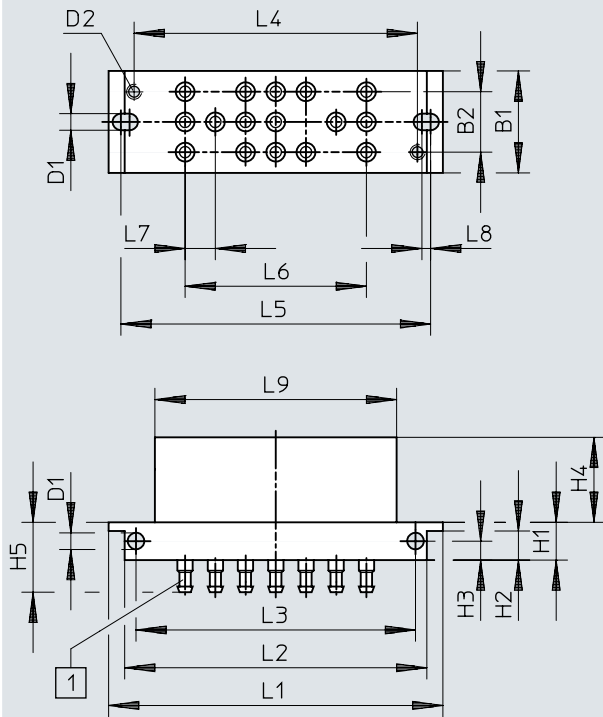


	B	D1	D2 ∅	H1	H2	H3	L1	L2
OS-1/8-B	16	G1/8	4,5	32	8	5	40	24
OS-1/8-NPT	16	1/8 NPT	4,5	32	–	5	40	24

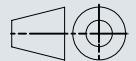
Dimensions

Dimensions – AND/OR blocks OS/ZK

Download CAD data www.festo.com



[1] Barbed connector for tubing, inside-Ø 3 mm

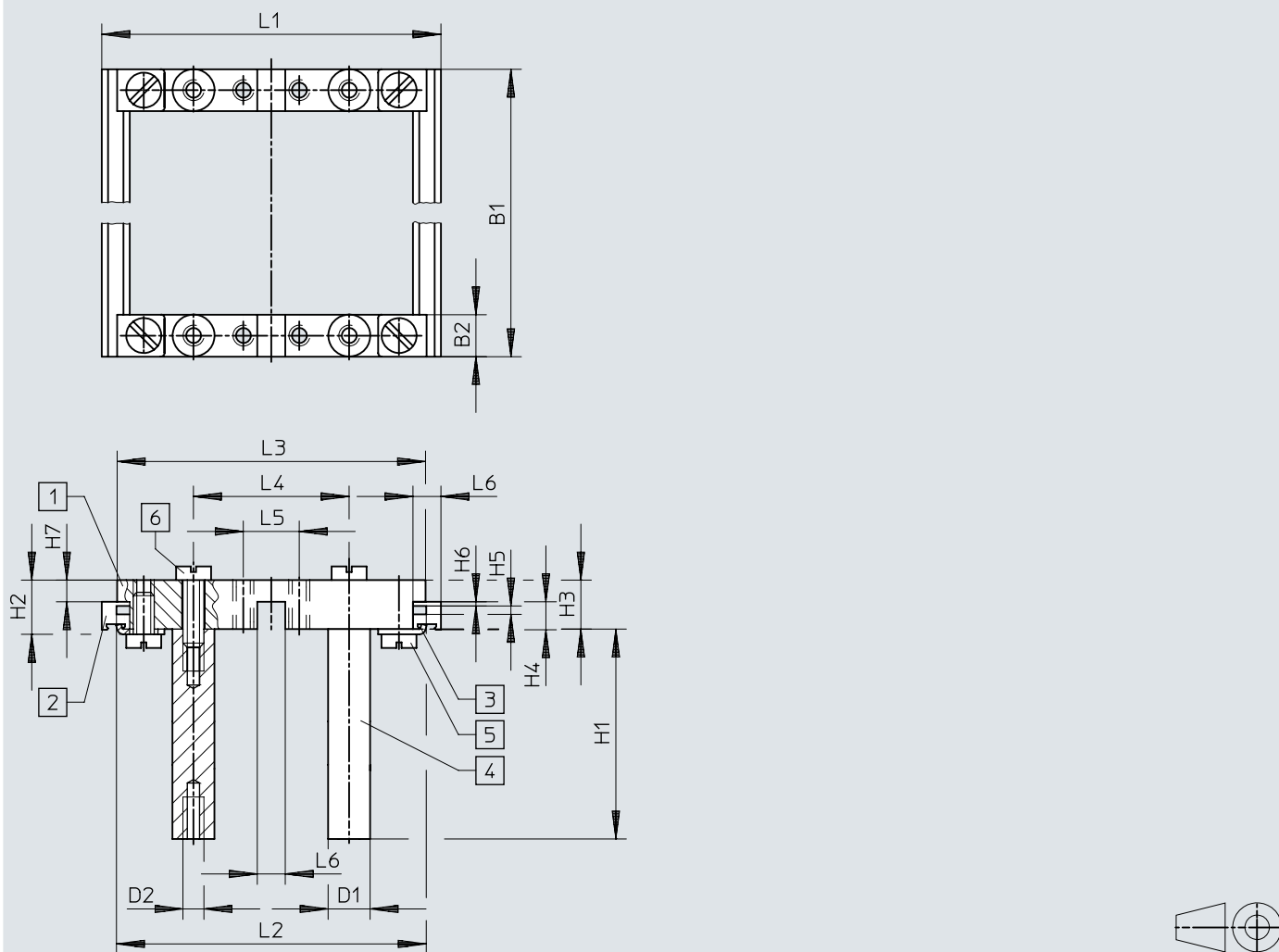


	B1	B2	D1 Ø	D2	H1	H2	H3	H4	H5	L1	L2	L3	L4	L5	L6	L7	L8	L9
OS/ZK	27	16	4,4	M4	10	7,7	5	22,5	18,5	88,5	80,8	74	75	81	48	8	2,3	64

Dimensions

Dimensions – Mounting frame NRRQ-2N

Download CAD data www.festo.com



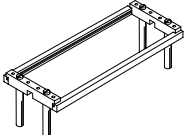
- [1] Connecting component NRV-2N
- [2] Profile strip NRQ-8-480
- [3] Mounting bracket NRW-12/3
- [4] Bolt NRB-12/60
- [5] Socket head screw DIN 84-M6X18-4.8
- [6] Socket head screw DIN 84-M6X12-4.8


	B1	B2	D1 ∅	D2	H1	H2	H3	H4	H5	H6	H7	L1	L2	L3	L4	L5	L6
NRRQ	480	12	12	M6	60	15,5	14	8	2,4	1,2	6,2	97	88,6	88,2	44,5	16	8

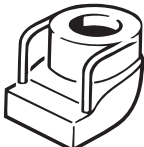
Ordering data

Ordering data					
Pneumatic connection, port 1	Pneumatic connection, port 2	Operating pressure	Product weight	Part no.	Type
G1/8	G1/8	1 ... 10 bar	45 g	6680	ZK-1/8-B
PK-3	PK-3	1.6 ... 8 bar	10 g	6685	ZK-PK-3
			85 g	4204	ZK-PK-3-6/3
PK-4	PK-4	0.001 ... 6 bar		7421	ZK-2-R-M5

Accessories

Mounting frame NRRQ-2N				
	Short type code	LABS (PWIS) conformity	Part no.	Type
	NRRQ	VDMA24364-B1/B2-L	9365	NRRQ-2N

Socket head screws				
	Based on standard	LABS (PWIS) conformity	Part no.	Type
	DIN 84	VDMA24364-C1-L	208938	DIN 84-M6X12-4.8
			200568	DIN 84-M6X18-4.8

Mounting bracket NRW				
	Short type code	LABS (PWIS) conformity	Part no.	Type
	NRW	VDMA24364-B1/B2-L	11571	NRW-9/1,5-B