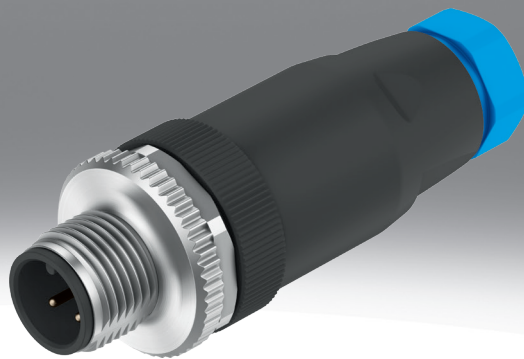


Plug, socket NECB

FESTO



Type code

| 001 | Series | |
|------|----------------------------------|--|
| NECB | Push-in connector | |
| 002 | Type of connector | |
| | Socket | |
| S | Plug | |
| 003 | Connection technology 1 | |
| M8 | M8x1, A-coded to EN 61076-2-104 | |
| M12 | M12x1, A-coded to EN 61076-2-101 | |
| 004 | Cable outlet right | |
| G | Straight | |
| W | Angled | |

| 005 | Socket/plug connection pattern | |
|-----|--------------------------------|--|
| 3 | 3-pin | |
| 4 | 4-pin | |
| 5 | 5-pin | |
| 006 | Connection technology 2 | |
| C2 | Screw terminal | |
| 007 | Additional features | |
| | None | |
| D | Double connection | |

Datasheet

Technical data – Electrical connection 1

| | | |
|--|---|--|
| Electrical connection 1, connector system | M12x1, A-coded to EN 61076-2-101 | M8x1, A-coded, to EN 61076-2-104 |
| Electrical connection 1, connection type | Plugs | |
| Cable outlet | Straight | |
| Electrical connection 1, number of connections/cores | 4; 5 | 3; 4 |
| Electrical connection 1, used connections/cores | 4; 5 | 3; 4 |
| Electrical connection 1, type of mounting | Screw-type lock with 18 mm hexagon and longitudinal knurl | Screw-type lock with hexagon A/F 9 mm and longitudinal knurl |
| Frequency of connection | 100 | |

Technical data – Electrical connection 2

| | | | | |
|--|--|--|---|---------------|
| Electrical connection 1, connector system | M12x1, A-coded to EN 61076-2-101 | | M8x1, A-coded, to EN 61076-2-104 | |
| Electrical connection 2, connection type | 2x cable | Cable | 2x cable | Cable |
| Electrical connection 2, connector system | Screw terminal | | | |
| Electrical connection 2, number of connections/cores | 4; 5 | | 4 | 3; 4 |
| Electrical connection 2, used connections/cores | 4; 5 | | 4 | 3; 4 |
| Cable fitting | Pg11 | Pg7 | M14 | 3/8-24 UNF-2A |
| Cable diameter | 2.1 ... 5.6 mm | 2.1 ... 7 mm | 2 ... 3.8 mm | 2.1 ... 5 mm |
| Note on the cable diameter | 2 cable through-feeds available | – | One cable through-feed for diameters 5.0 – 7.6 mm Two cable through-feeds for diameters 2.0 – 3.8 mm | – |
| Connection cross section | 0.14 ... 0.75 mm ² | | | |
| Note on connection cross-section | 0.1 mm ² with wire end sleeve, 0.1 mm ² with wire ferrule | 0.1 mm ² with wire end sleeve | | |

Technical data – Electrical

| | |
|---------------------------------|---------------|
| Operational voltage range DC | 0 ... 60 V |
| Operational voltage range AC | 0 ... 48 V |
| Immunity to surge | 1.5 kV |
| Current rating at 40° C | 4 A |
| Pollution degree | 3 |
| Protective conductor connection | Not available |

Materials

| | |
|-----------------------------|--------------------------------------|
| Material housing | PA66-GF30 |
| Housing colour | Black |
| Material seals | FPM |
| Material screws | Nickel-plated steel |
| Material screw-type lock | Die-cast zinc, nickel-plated |
| Material electrical contact | Brass, nickel-plated and gold-plated |
| Note on materials | RoHS-compliant |
| LABS (PWIS) conformity | VDMA24364-B2-L |

Datasheet

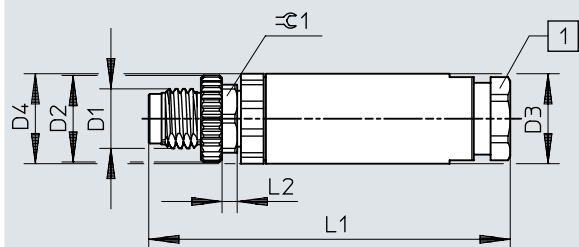
Operating and environmental conditions

| | |
|--------------------------------|---|
| Ambient temperature | -25 ... 90°C |
| Note on ambient temperature | Note derating |
| Corrosion resistance class CRC | 1 - Low corrosion stress |
| Degree of protection | IP65, IP67 |
| Note on degree of protection | In assembled state |
| Approval | c UL us listed (OL) |
| Certificate issuing authority | UL E474609 |
| Instructions on use | Only energy-limited circuits with a maximum current of 4 A at a max. open circuit voltage of 30 V DC are permissible for supplying electrically actuated valves from Festo. |

Dimensions

Dimensions – M8 plug, straight, single cable

Download CAD data → www.festo.com

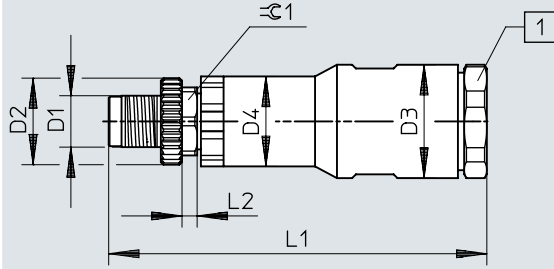


| | D1 | D2 ∅ | D3 ∅ | L1 | L2 | $\approx \text{C}1$ |
|-------------|------|---------|---------|----|----|---------------------|
| NECB-S-M8G3 | M8x1 | 11,5 | 11,8 | 48 | 2 | 9 |
| NECB-S-M8G4 | | | | | | |

Dimensions

Dimensions – M8 plug, straight, double cable

Download CAD data → www.festo.com

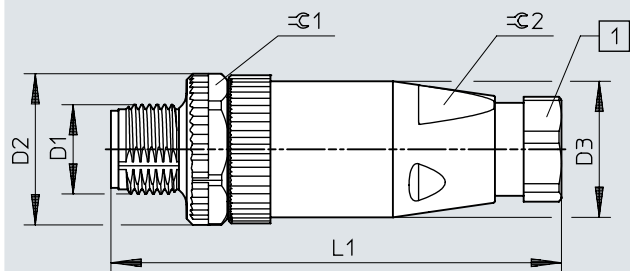


| | D1 | D2 ∅ | D2 ∅ | D4 ∅ | L1 | L2 | 1:1 |
|-------------------|------|---------|---------|---------|----|----|-----|
| NECB-S-M8G4-...-D | M8x1 | 11,5 | 15 | 11,8 | 50 | 2 | 9 |

Dimensions

Dimensions – M12 plug, straight, single cable

Download CAD data → www.festo.com

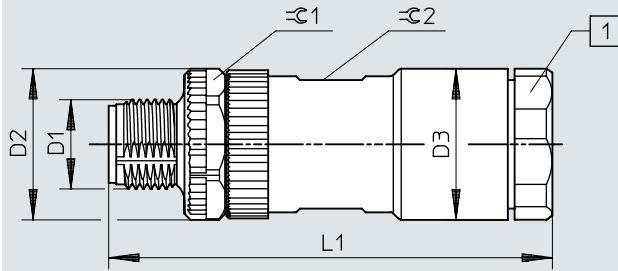


| | D1 | D2 ∅ | D3 ∅ | L1 | ⊕1 | ⊕2 |
|--------------|-------|---------|---------|------|----|----|
| NECB-S-M12G4 | M12x1 | 20 | 18 | 36,9 | 18 | 14 |
| NECB-S-M12G5 | | | | | | |

Dimensions

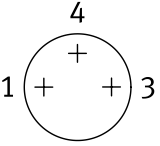
Dimensions – M12 plug, straight, double cable

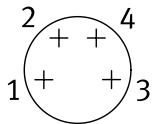
Download CAD data → www.festo.com

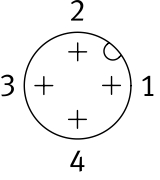


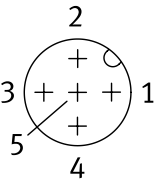
| | D1 | D2 ø | D3 ø | L1 | C1 | C2 |
|--------------------|-------|---------|---------|----|----|----|
| NECB-S-M12G4-...-D | M12x1 | 20 | 20 | 60 | 18 | 17 |
| NECB-S-M12G5-...-D | | | | | | |

Ordering data

| Ordering data – Electrical connection 1 M8 plug, 3-pin | | | | | | |
|---|--------------|--|----------------|----------------|----------------|-----------------------|
| | Cable outlet | Electrical connection 2, connection type | Cable diameter | Product weight | Part no. | Type |
|  | Straight | Cable | 2.1 ... 5 mm | 5 g | 8162298 | NECB-S-M8G3-C2 |

| Ordering data – Electrical connection 1 M8 plug, 4-pin | | | | | | |
|---|--------------|--|----------------|----------------|----------------|-------------------------|
| | Cable outlet | Electrical connection 2, connection type | Cable diameter | Product weight | Part no. | Type |
|  | Straight | 2x cable | 2 ... 3.8 mm | 8 g | 8162300 | NECB-S-M8G4-C2-D |
| | | Cable | 2.1 ... 5 mm | 5 g | 8162299 | NECB-S-M8G4-C2 |

| Ordering data – Electrical connection 1 M12 plug, 4-pin | | | | | | |
|---|--------------|--|----------------|----------------|----------------|--------------------------|
| | Cable outlet | Electrical connection 2, connection type | Cable diameter | Product weight | Part no. | Type |
|  | Straight | 2x cable | 2.1 ... 5.6 mm | 24 g | 8162295 | NECB-S-M12G4-C2-D |
| | | Cable | 2.1 ... 7 mm | 18 g | 8162294 | NECB-S-M12G4-C2 |

| Ordering data – Electrical connection 1 M12 plug, 5-pin | | | | | | |
|---|--------------|--|----------------|----------------|----------------|--------------------------|
| | Cable outlet | Electrical connection 2, connection type | Cable diameter | Product weight | Part no. | Type |
|  | Straight | 2x cable | 2.1 ... 5.6 mm | 25 g | 8162297 | NECB-S-M12G5-C2-D |
| | | Cable | 2.1 ... 7 mm | 19 g | 8162296 | NECB-S-M12G5-C2 |