

## Proportional directional control valves MPYE

**FESTO**



### Key features



#### General

The directly actuated proportional directional control valve has a position-controlled spool. This converts an analogue input signal into a corresponding opening cross-section at the valve outputs.

In combination with an external position controller and displacement encoder, this can be used to create a precise pneumatic positioning system.

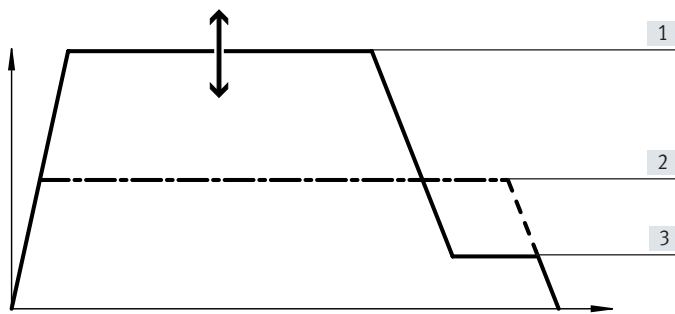
- Flow control function for varying the cylinder speed
- 5/3-way function for varying the direction of movement

#### Wide choice of variants

- Setpoint input
  - Analogue voltage signal
  - Analogue current signal
- Flow rates from 100 ... 2000 l/min

## Key features

### Short machine cycle times – fast switching of programmed flow rates



Y-axis: Cylinder speed  
 X-axis: Cylinder stroke  
 — A – Proportional valve  
 - - - - B – Switching valve

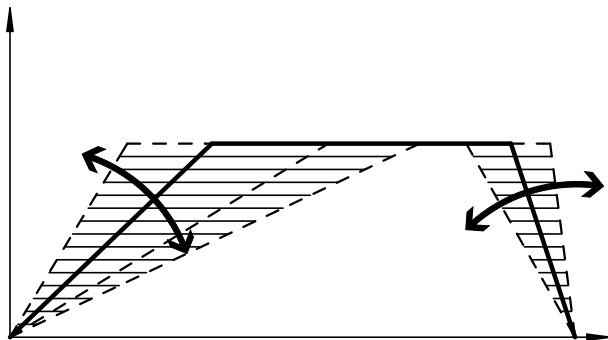
Optimising the cylinder speeds reduces machine cycle times

- Assembly technology
- Handling technology
- Furniture industry

A: Proportional valves allow different speed levels ([1] Fast, [3] Creep) and speed ramps to be set.

B: Speed regulation using switching valves requires exhaust air flow control and is very inflexible (only [2] Medium speed).

### Flexible cylinder speeds – achieving variable flow rates



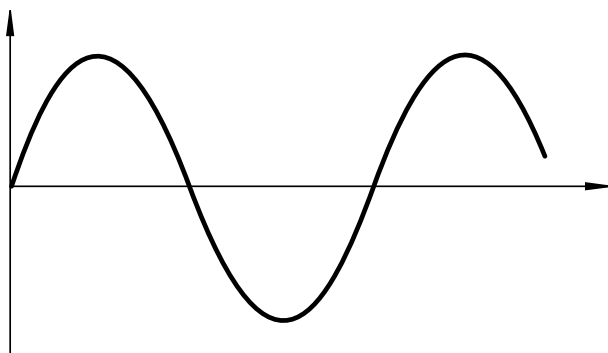
Y-axis: Cylinder speed  
 X-axis: Cylinder stroke

Adapt cylinder speeds flexibly to the process.

Make use of custom acceleration ramps (gentle start for sensitive items)

- Automotive suppliers
- Production engineering
- Conveyor technology
- Inspection

### Proportional directional control valve as final control element – dynamic and fast changing of flow rates



Y-axis: Cylinder speed  
 X-axis: Time

- Fatigue testing
- SoftStop with end-position controller SPC11

## Type codes

001	Series
MPYE	Proportional directional control valve

002	Valve function
5	5/3-way valve

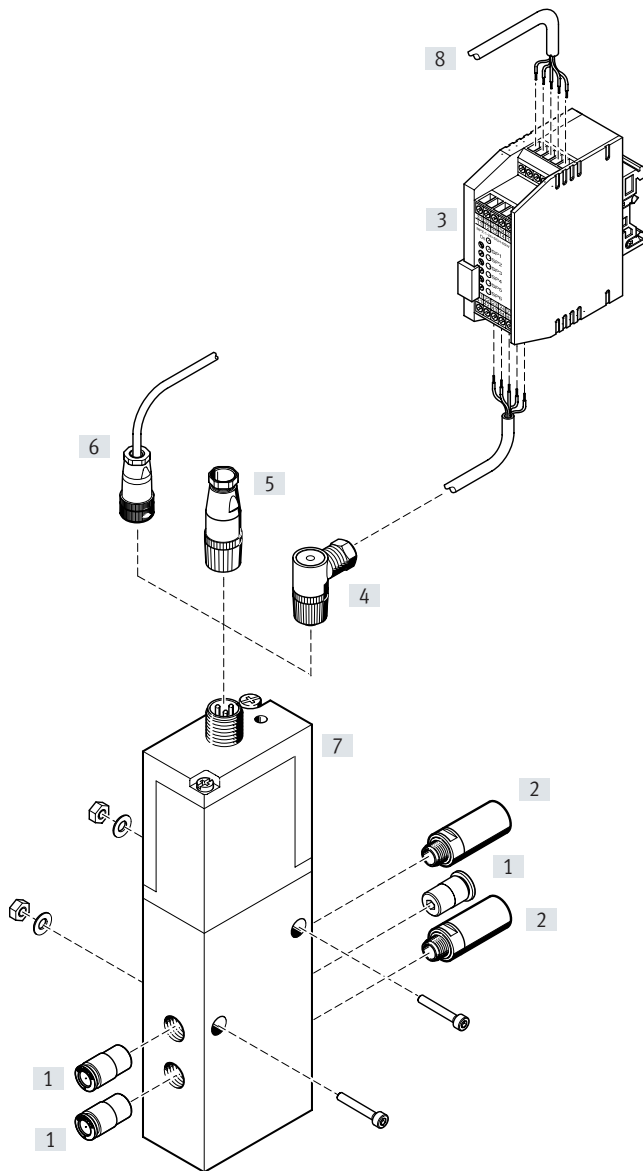
003	Pneumatic connection
M5	M5
1/8	G1/8
1/4	G1/4
3/8	G3/8

004	Flow rate
	Standard
HF	High flow rate
LF	Low flow rate

005	Setpoint input for individual valves
010	0 ... 10 V
420	4 ... 20 mA

006	Generation
B	Series B

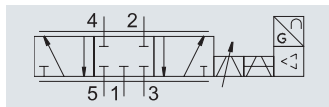
## Peripherals overview



Accessories		Description	→ Page/Internet
[1]	Push-in fitting	For connecting compressed air tubing with standard O.D.	npqh
[2]	Silencer U	For mounting in exhaust ports	u
[3]	Setpoint module MPZ	For generating 6+1 analogue voltage signals	10
[4]	Sensor socket SIE-WD-TR	Angled, 4-pin, M12x1	10
[5]	Sensor socket SIE-GD	Straight, 4-pin, M12x1	10
[6]	Connecting cable KMPYE	–	10
[7]	Proportional directional control valve MPYE	–	6
[8]	Digital input/output	For actuating the setpoint module	–

Data sheet

Function



Variants

- Setpoint input as analogue voltage signal 0 ... 10 V
- Setpoint input as analogue current signal 4 ... 20 mA



- Voltage  
17 ... 30 V DC
- Flow rate  
100 ... 2000 l/min
- Pressure  
0 ... 1 MPa  
0 ... 10 bar

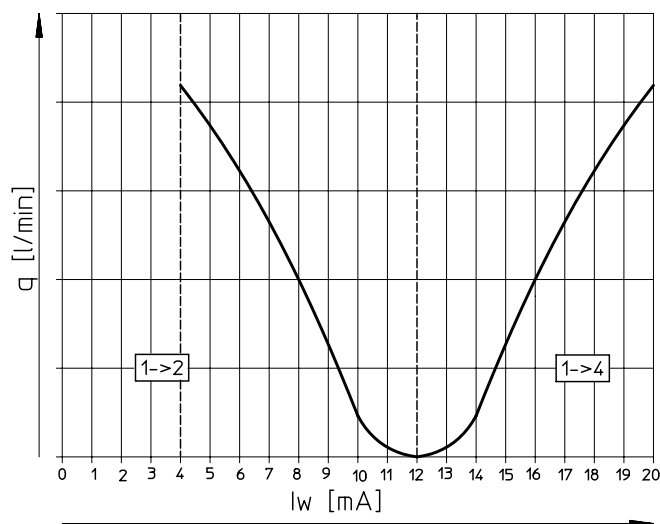
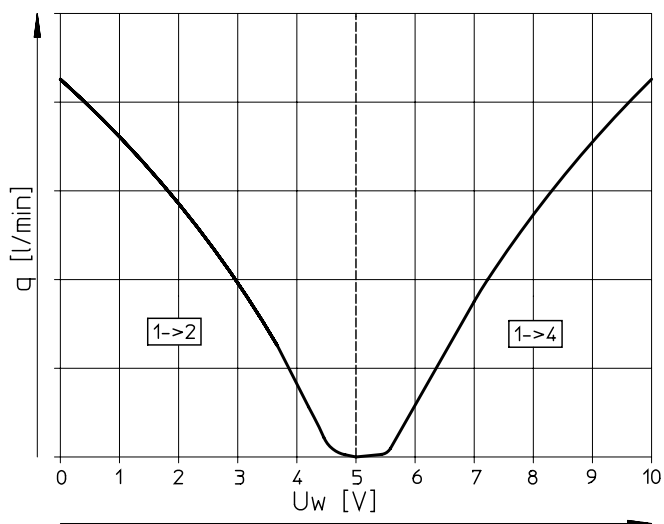
General technical data		Pneumatic connection		M5		G1/8		G1/4		G3/8	
						Low flow rate	High flow rate				
Valve function		5/3-way, normally closed									
Design		Piston spool, directly actuated, controlled piston spool position									
Sealing principle		Hard									
Actuation type		Electrical									
Reset method		Magnetic									
Type of control		Direct									
Direction of flow		Not reversible									
Type of mounting		Via through-hole									
Mounting position <sup>1)</sup>		Any									
Nominal width	[mm]	2	4	6	8	10					
Standard nominal flow rate	[l/min]	100	350	700	1400	2000					
Product weight	[g]	255	285	285	510	685					

1) If the proportional directional control valve moves during operation, it must be mounted at right angles to the direction of movement.

Flow rate  $q$  at 6 → 5 bar as a function of setpoint voltage or current

Voltage type MPYE-5-...-010-B

Current type MPYE-5-...-420-B



## Data sheet

Electrical data						
Pneumatic connection		M5	G1/8		G1/4	G3/8
			Low flow rate	High flow rate		
Power supply	[V DC]	17 ... 30				
Switching times	[ms]	4.1	4.8		5.0	5.5
Reference value	Voltage type	[V DC]	0 ... 10			
	Current type	[mA]	4 ... 20			
Max. hysteresis <sup>1)</sup>	[%]	0.4				
Valve mid-position	Voltage type	[V DC]	5 (±0.1)			
	Current type	[mA]	12 (±0.16)			
Duty cycle <sup>2)</sup>	[%]	100				
Residual ripple	[%]	5				
Critical frequency <sup>3)</sup>	[Hz]	115	95	95	80	70
Reverse-polarity protection	Voltage type	For all electrical connections				
	Current type	For setpoint value				
Degree of protection		IP65				
Electrical connection		4-pin plug, round design, M12x1				

1) Based on the maximum stroke of the piston spool.

2) The proportional directional control valve switches off automatically if it overheats (goes to mid-position) and switches back on once cool.

3) Corresponds to the 3dB corner frequency at the maximum movement stroke of the piston spool.

## Operating and environmental conditions

Operating pressure	[MPa]	0 ... 1
	[bar]	0 ... 10
Operating medium		Compressed air to ISO 8573-1:2010 [6:4:4]
Note on the operating/pilot medium		Lubricated operation not possible
Ambient temperature	[°C]	0 ... 50
Temperature of medium	[°C]	5 ... 40, condensation not permitted
Certification		RCM
Shock and vibration resistance <sup>1)</sup>		To DIN/IEC 68 Parts 2 – 27, severity level 2 to FN 942017 Parts 4 and 5
CE marking (see declaration of conformity) <sup>2)</sup>		To EU EMC Directive <sup>3)</sup>
		To EU RoHS Directive
UKCA marking (see declaration of conformity) <sup>2)</sup>		To UK instructions for EMC <sup>3)</sup>
		To UK RoHS instructions
KC mark		KC EMC
Corrosion resistance CRC <sup>4)</sup>		2
Note on materials		RoHS-compliant
PWIS conformity		VDMA24364-B2-L

1) If the proportional directional control valve moves during operation, it must be mounted at right angles to the direction of movement.

2) Additional information [www.festo.com/catalogue/...](http://www.festo.com/catalogue/...) → Support/Downloads.

3) For information about the area of use, see the EC declaration of conformity at: [www.festo.com/catalogue/...](http://www.festo.com/catalogue/...) → Support/Downloads.

If the devices are subject to usage restrictions in residential, commercial or light-industrial environments, further measures for the reduction of the emitted interference may be necessary.

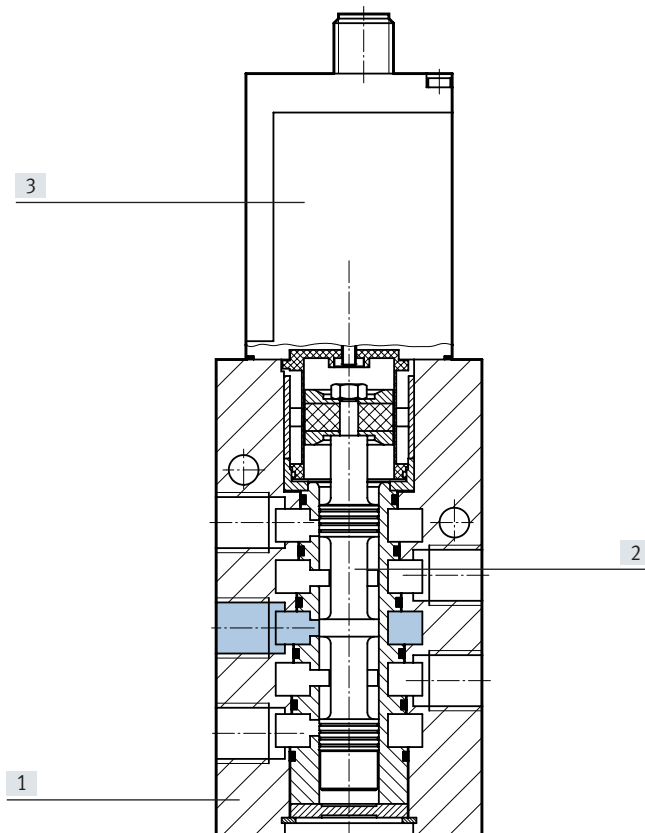
4) Corrosion resistance class CRC 2 to Festo standard FN 940070


Moderate corrosion stress. Indoor applications in which condensation can occur. External visible parts with primarily decorative surface requirements which are in direct contact with a normal industrial environment.

Data sheet

Materials

Sectional view



 **Note**  
If the power supply cable breaks, the valve assumes the closed mid-position.

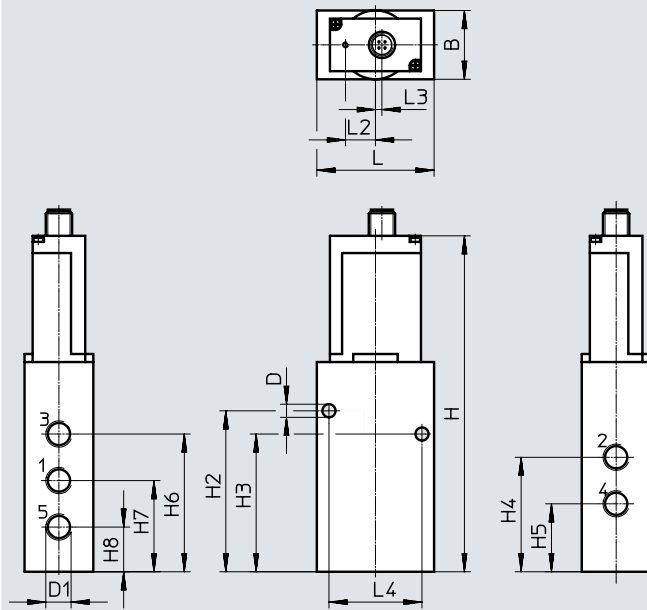
Proportional directional control valve

[1]	Housing	Anodised aluminium
[2]	Valve spool	Tempered aluminium
[3]	Housing for electronics	Coated ABS
–	Seals	NBR



## Data sheet

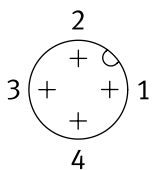
## Dimensions

 Download CAD data → [www.festo.com](http://www.festo.com)


Type	Pneum. connection D1	B	D ∅	H	H2	H3	H4
MPYE-5-M5-...-B	M5	26	5.5	130	57	39	32.3
MPYE-5-1/8-...-B	G1/8	26	5.5	149.3	71.3	55.3	45.8
MPYE-5-1/4-...-B	G1/4	35	6.5	162.5	77.5	66	54.5
MPYE-5-3/8-...-B	G3/8	40	6.5	174.5	96.3	77.3	63.3

Type	Pneum. connection D1	H5	H6	H7	H8	L	L2	L3	L4
MPYE-5-M5-...-B	M5	20.3	38.3	26.3	14.3	45	14.8	3.2	32
MPYE-5-1/8-...-B	G1/8	26.8	55.3	36.3	17.3	45	14.8	3.2	35
MPYE-5-1/4-...-B	G1/4	31.5	66	43	20	58	14.8	3.2	46
MPYE-5-3/8-...-B	G3/8	35.3	80.3	49.3	18.3	67	14.8	3.2	54

## Terminal allocation


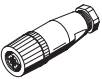
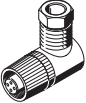
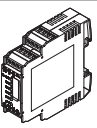


- 1 24 V DC, supply voltage
- 2 GND
- 3  $U_w/I_w$  setpoint input
- 4 GND

## Ordering data

Description		Part no.	Type		
<b>Proportional directional control valves MPYE</b>					
Data sheets → Internet: <a href="http://mpey">mpey</a>					
	Voltage type 0 ... 10 V	Pneumatic connection M5	Standard flow rate	<b>154200</b>	<b>MPYE-5-M5-010-B</b>
		Pneumatic connection G1/8	Low flow rate	<b>151692</b>	<b>MPYE-5-1/8-LF-010-B</b>
			High flow rate	<b>151693</b>	<b>MPYE-5-1/8-HF-010-B</b>
		Pneumatic connection G1/4	Standard flow rate	<b>151694</b>	<b>MPYE-5-1/4-010-B</b>
	Pneumatic connection G3/8	Standard flow rate	<b>151695</b>	<b>MPYE-5-3/8-010-B</b>	
	Current type 4 ... 20 mA	Pneumatic connection M5	Standard flow rate	<b>162959</b>	<b>MPYE-5-M5-420-B</b>
		Pneumatic connection G1/8	Low flow rate	<b>161978</b>	<b>MPYE-5-1/8-LF-420-B</b>
			High flow rate	<b>161979</b>	<b>MPYE-5-1/8-HF-420-B</b>
Pneumatic connection G1/4		Standard flow rate	<b>161980</b>	<b>MPYE-5-1/4-420-B</b>	
Pneumatic connection G3/8	Standard flow rate	<b>161981</b>	<b>MPYE-5-3/8-420-B</b>		

## Accessories

Ordering data	Description	Part no.	Type
<b>Connecting cable</b> <span style="float: right;">Data sheets → Internet: connecting cable</span>			
	Straight socket, M12x1, 4-pin, open cable end	Cable length 5 m	<b>151909</b> <b>KMPYE-5</b>
<b>Sensor socket</b> <span style="float: right;">Data sheets → Internet: sie</span>			
	Straight, 4-pin, M12x1	<b>18494</b>	<b>SIE-GD</b>
	Angled, 4-pin, M12x1	<b>12956</b>	<b>SIE-WD-TR</b>
<b>Setpoint module</b> <span style="float: right;">Data sheets → Internet: mpz</span>			
	Setpoint module for generating 6 + 1 analogue voltage signals	<b>546224</b>	<b>MPZ-1-24DC-SGH-6-SW</b>

# Festo - Your Partner in Automation



**1 Festo Inc.**  
5300 Explorer Drive  
Mississauga, ON L4W 5G4  
Canada

**Festo Customer Interaction Center**  
Tel: 1 877 463 3786  
Fax: 1 877 393 3786  
Email: [customer.service.ca@festo.com](mailto:customer.service.ca@festo.com)



**2 Festo Pneumatic**  
Av. Ceylán 3,  
Col. Tequesquináhuac  
54020 Tlalneantla,  
Estado de México

**Multinational Contact Center**  
01 800 337 8669  
[ventas.mexico@festo.com](mailto:ventas.mexico@festo.com)



**3 Festo Corporation**  
1377 Motor Parkway  
Suite 310  
Islandia, NY 11749

**Festo Customer Interaction Center**  
1 800 993 3786  
1 800 963 3786  
[customer.service.us@festo.com](mailto:customer.service.us@festo.com)



**4 Regional Service Center**  
7777 Columbia Road  
Mason, OH 45040

Connect with us



[www.festo.com/socialmedia](http://www.festo.com/socialmedia)



[www.festo.com](http://www.festo.com)

Subject to change